



Saturday,
October 22, 2016
Beulaville, NC

Edwards
LAND & CATTLE CO.

FALL FEMALE & BULL
PRODUCTION SALE

LIMOUSIN LIM-FLEX ANGUS

SALE DAY PHONES

Dexter Edwards.....910.290.0467
Randy Ratliff615.330.2735

Nicholas Edwards910.290.1424
Mark Smith515.229.5227

AUCTIONEER ... Cody Lowderman

ACCOMMODATIONS

The Country Squire Vintage Inn & Winery910.296.1727
748 NC Hwy 24&50 Warsaw, NC 28398 • www.countrysqireinn.com

Quality Inn of Warsaw910.293.2800
2676 West NC 24, Warsaw, NC, US, 28398

Sleep Inn & Suites910.478.0099
129 Circuit Lane, Jacksonville, NC 28546

SALE ORDER & SUPPLEMENTAL INFORMATION

Friday, October 21st the sale order and supplemental information will be posted at www.RRMktg.com for your convenience.

GUARANTEE

All cattle sell under the standard guarantee of the North American Limousin Foundation.

FINANCING

For financing options please contact Dexter Edwards at 910.290.0467, Nicholas Edwards at 910.290.1424 or Randy Ratliff at 615.330.2735.

TRUCKING

A trucking company will be on hand sale day to assist with any trucking that might be needed. Edwards Land & Cattle Co. will see to it that cattle will be delivered to several central locations to accommodate anyone that lives throughout the United States and Canada.

TERMS & CONDITIONS

Terms of the sale are cash unless satisfactory credit arrangements have been made prior to the sale. A representative will be on hand sale day if your wishes are to insure your purchases. Please note: The sale manager is only an agent for the seller and has no responsibility other than those involved in conducting the sale. All persons who attend the sale do so at their own risk. Neither the sale manager nor Edwards Land & Cattle Co. assume liability, legal or otherwise for, any accidents which may occur.

SIGHT UNSEEN PURCHASE AGREEMENT

If you are unable to attend the sale and want to speak with Dexter or Nicholas Edwards or Randy Ratliff then please don't hesitate to call. They will provide you with a complete satisfaction guarantee for the have purchased. If within two weeks from the date of the sale you are not satisfied with your purchased and how they were described to you then the Edwards family will gladly take the animal back.

DRIVING DIRECTIONS

From Raleigh-Durham International Airport (RDU) to Edwards Land and Cattle Sale Facility take interstate I 40 east towards Wilmington/Benson. Continue on 40 East until exit 373 (Magnolia/Kenansville) turn left on 903 towards Kenansville, stay on 903 until intersection of Hwy 24. Take Hwy 24 East towards Beulaville. Stay on hwy 24 through Beulaville; go approximately 6 miles to Willard Edwards Rd on the left. The Sale Facility will be located approximately 1.5 miles on the left.

From Albert Ellis Airport (OAJ) take left onto NC HWY 111 to Haw Branch Rd. Take Haw Branch Rd to Hwy 24 west. Willard Edwards Rd will be approximately 4 miles on the right. The Sale Facility will be located approximately 1.5 miles on the left.

From Wilmington International Airport (ILM) take I-40 West to Exit 385 (Wallace/Beulaville). Take right towards Beulaville on Hwy NC-41. Travel 18 miles to intersection of 41/24 take hwy 24 east approximately 6 miles to Willard Edwards Rd on the left. The Sale Facility will be located approximately 1.5 miles on the left.

SCHEDULE OF EVENTS

Friday, October 21st

Noon Cattle available for viewing
Refreshments will be available

Saturday, October 22nd

8:00 a.m. Cattle available for viewing
11:30 a.m. Complementary BBQ lunch served
12:30 p.m. Sale starts (E.S.T.)

SELLING 87 1/2 Head of Cattle

1/2 Proven Donor Prospect Pair
19 Herd Sire Prospects - 33 Fall Bred Females
16 Spring Cow Calf Pairs - 3 Spring Bred Females
20 Embryos

PAYMENTS

All cattle must be paid for immediately following the conclusion of the sale. R & R Marketing Company will now be accepting credit cards the day of the sale.

SALE CONSULTANT

Mark Smith.....515.229.5227



Randall O. Ratliff
615.330.2735
Randy@RRMktg.com
www.RRMktg.com
1212 Laurel St. #1614
Nashville, TN 37203

If you need assistance with your purchases or want to discuss the genetics selling then please feel free to contact R & R Marketing Company. As a paid marketing agent for Edwards Land & Cattle we take pride in the opportunity to work closely with this program. We can assist you with your phone order and/or handle your bid in the most confidential manner. Email, call or text and we will be more than happy to assist.



Dexter and Nicholas Edwards

314 Willard Edwards Road • Beulaville, NC 28518
910.298.3012 • FAX: 910.298.6155 • edwardslimousin@earthlink.net
Nicholas, cell: 910.290.1424 • Nicholas, email: npedwards07@yahoo.com

It is a pleasure to welcome you to the Edwards Land and Cattle 8th Annual Fall Production Sale. The sale will be held at our sale facility on the farm, located at: 314 Willard Edwards Road, Beulaville, North Carolina. The Edwards

Land and Cattle Family are excited to be able to present some of the best quality genetics in the Limousin breed. It is the ELCX objective to produce cattle that can excel in the show ring while still being high-performance in the pasture, being problem-free with moderate birth rates and superior growth rates.

We are extremely proud of the success our genetics have had this summer in the show ring. With having ELCX Candy, owned with great friends Wies Limousin, winning Supreme Champion Female and ELCX Bulletproof, owned with great customers and friends Owen Cattle Company, winning Grand Champion Bull at the All American Futurity, it was an amazing show day for ELCX. We are, also, extremely proud of all of the hard work the juniors put in supporting and promoting ELCX genetics this summer. ELCX AALIYAH owned by Jensen Barwick was Grand Champion Cow/Calf pair for the Junior and the AAF. We are definitely reaching our goal of creating cattle that excel in the show ring, as well as out in the pasture for the real world cattlemen.

As a family operation, we take great pride in our cattle and want to provide you with only excellent quality Limousin, Lim-Flex, and Angus cattle that will be an asset to any cattle operation; this includes our Bull Lease program, be sure to ask Dexter/ Nicholas and see page 35 for more information. With the fluctuating market, now is the time to invest in superior quality genetics to add to and improve your operations. All of our cattle sale under the standard guarantee of the North American Limousin Foundation. If you are in need of financing or trucking arrangements, we will gladly assist you.

We will hold a reception and cattle viewing at the sale barn on Friday, October 21st beginning at 5:30 p.m. The Edwards Land and Cattle family will provide you with a down home southern barbeque on the day of the sale at 11:30 a.m. The whole family looks forward to seeing you. If you need any help with directions or accommodations, please do not hesitate to give us a call.

Saturday, October 22, 2016

Beulaville, NC

At our Sale Facility, 314 Willard Edwards Rd, Beulaville, NC 28518





Morris



Morris

Lim-Flex (50) Cow HP / DB PBRS 346A LFF 2041410 03.03.13

PBRS Audrey 346A

1

EPD	CED	BW	WW	YW	MA	CEM	SC	ST	DOC	CW	RE	YG	MS	\$MTI
9	0.3	52	85	19	9	0.72	15	7	22	-0.35	0.09	0.35	57.9	
%Rank	30	25	80	50	90	10	40	50	90	55	>95	>95	10	15

MAGS THE GENERAL
MAGS YIP
AUTO CARMINDA 656S

J BAR 7 ALLIANCE 6869
BUFORD ERICA 9312
LCC ERICA LG008

AUTO DOLLAR GENERAL 122R
EXLR LUVLY 821M
JCL LODESTAR 27L
AUTO CARMINDA 872P
SITZ ALLIANCE 6595
SITZ EVERELDA ENTENSE 219
BON VIEW NEW DESIGN 1407
LEACHMAN B C D3243

Lim-Flex (43) Cow HP / DB ELCX 340D LFF 2104523 04.18.16

ELCX Dogwood 340 D

1A

EPD	CED	BW	WW	YW	MA	CEM	SC	ST	DOC	CW	RE	YG	MS	\$MTI
9	1.1	56	92	23	8	0.88	14	6	26	0.07	-0.03	0.47	64.41	
%Rank	35	40	80	55	75	20	45	70	95	55	>95	90	10	10

AUTO WILL POWER 160X

PBRS AUDREY 346A

G A R PREDESTINED
AUTO REBECA 292S
MAGS YIP
BUFORD ERICA 9312

LOT 1

LOT 1A

P.E. 5.30.15 to 8.10.16 to MAGS Xyloid 3712X

Selling half interest and no possession

PBRS Audrey 346A is the dam of the 2106 All American Futurity Supreme Champion Female for Edwards Land & Cattle Co. and Wies Limousin, Wellsville, MO

She is a daughter of RLBH Air Force One, the powerful herd sire that has accomplished the following:

- 2013 NAILE Grand Champion Lim-Flex Bull 2013 NWSS
- 2014 AALF Grand Champion Bull
- 2015 NWSS Division Champion
- Grand Champion Lim-Flex Bull 2014 SESC Grand Champion Bull
- 2014 NAILE Grand Champion Bull
- National Medal of Excellence Gold Medal Bull National Limousin Sale Top-Selling Lot

RLBH Air Force One is one of the greatest show bulls in the history of the Limousin breed, and he is owned by Council Family Limousin. He was the top-selling Bull at the National Limousin Sale at the National Western Stock Show

Her dam PBRS Audrey 346A was a top purchase from our good friends at P Bar S Ranch, Sand Springs, OK. She is a daughter of MAGS Yip from a purebred Angus daughter of J Bar 7 Alliance 6869. Edwards Land & Cattle Co. have decided to part with half embryo interest in this female. She is double black and homozygous polled and a 50% Lim-Flex female. She scanned a 4.450 for IMF and as you can see in her picture she is made as perfect as you would ever want one. Also selling will her daughter sired by the \$30,000 valued sire AUTO Will Power 160X, ELCX Dogwood 340D.



Morris



ELCX Candy 330C, 2016 All-American Futurity Supreme Champion Female, and 3/4 sib to Lot 1A.

LOT 2

BW: 68 lbs.; WW: 615 lbs.; YW: 1,180 lbs.

56% Lim-Flex, double polled and double black

ELCX Come Along 340C is a 3/4 sibling to the 2016 All American Futurity Supreme grand champion female ELCX Candy 330C.

He is a son of the many times champion bull RLBH Air Force One and from a 50% Lim-Flex daughter of MAGS Yip from a pure-bred Angus female

We admire his moderation in frame, fleshing ability and his smooth conformation

Lim-Flex (56) Bull DP / DB ELCX 340C LFM 2105334 03.19.15

ELCX Come Along 340C 2

EPD	CED	BW	WW	YW	MA	CEM	SC	ST	DOC	CW	RE	YG	MS	\$MTI
10	0.1	50	80	24	10	0.77	-	8	17	-0.14	0.06	0.27	54.54	
%Rank	25	25	95	80	65	4	55	-	95	85	>95	>95	20	30

EF XCESSIVE FORCE
RLBH AIR FORCE ONE
 EF YAFFA 821Y

MAGS YIP
PBRS AMY 340A
 BUFORD ESSA 9022

D A TRAVELER 004 703
 CFLX MOLLYS IMAGE
 EXLR NEW GENERATION 071M
 MAGS ROSE PETAL
 MAGS THE GENERAL
 AUTO CARMINDA 656S
 J BAR 7 ON TIME 6537
 J BAR 7 ESSA'S AUDREY 338



Owned by ...

OCC Limousin
Branded Beef
& Seedstock
OWEN CATTLE COMPANY

Kelley, Holly & Cash Owen
Ferrell Owen
731.694.7996
owencattleco1@yahoo.com

Edwards
LAND & CATTLE CO.

Dexter & Nicholas Edwards
910.298.3012
Nicholas, cell: 910.290.1424
email: npedwards07@yahoo.com

Lim-Flex (45.6) Bull HP / HB ELCX 438B LFM 2074236 11.10.14

ELCX Bullet Proof 438B ET Ref. [REDACTED]

	CED	BW	WW	YW	MA	CEM	SC	ST	DOC	CW	RE	YG	MS	\$MTI
EPD	9	1.4	92	110	22	7	1.43	-	10	33	0.83	-0.30	0.26	69.05
%Rank	35	50	1	15	80	35	4	-	90	30	5	20	20	5

TC ABERDEEN 759
EBFL YPSILANTI 420Y
MAGS RAMADA

S A V BISMARCK 5682
AUTO POEM 273Y
MAGS PHANTOMS PRIZE

C R A BEXTOR 872 5205 608
TC BLACKBIRD 4034
TNUH BLUE PRINT 245H
MAGS MANDA
G A R GRID MAKER
S A V ABIGALE 0451
GPFF BLAQUE RULON
ALCM KOOL TUNES

Bullet Proof is making a name for himself across the show circuit. He was the Division III Champion Bull at the NAILE and the Reserve Division III Bull at the NWSS. Now he was named Grand Champion Bull at the All-American Limousin Futurity in Kentucky. He has the performance data to back up his look with eight EPD's in the top 20% or better, ranking in the top 2% for SC and REA, the top 10% for WW and CEM, the top 15% for YW and CW and the top 20% for YG and \$MTI.

BW: 70 lbs.; WW: 618 lbs.; YW: 1,113 lbs.

**AALF
Grand
Champion Bull**



EBFL San Jose 170X, dam of Lot 3.

BW: 78 lbs.; WW: 682 lbs.; YW: 1,194 lbs.

Here is one big time herd sire prospect from the heart of the ELCX program. He is a son of OKSU The Profit, the leading P Bar S Ranch sire and son of LH Rodemaster 338R.. His dam is one of the very best females of the entire business, EBFL San Jose 170X. She is a daughter of SAV Pioneer 7301 and from the GAR Predestined daughter, TMCK San Jose 170U. 170U is the \$60,000 half interest valued donor at Tubmill Creek Farm. 170X is the proven donor and one of the leading females in transplant for ELCX and Milam. EBFL San Jose 170X offers an amazing set of EPD's with a 3 for birth, 72 for Weaning Weight, 116 for Yearling Weight, 24 for Milk, .84 for Ribeye and .73 for Marbling. ELCX Camp Fire 508C has everything great lined up in his favor and is ready to work for the new owner and be the leading herd sire. He ranks in the top 10% of the breed for CW with a 41, marbling with a .44 and SMTI with a 67.28. He also ranks in the top 15% for Yearling Weight with a 112.

LOT 3

Lim-Flex (50) Bull Polled / HB ELCX 508C LFM 2095839 03.17.15

ELCX Camp Fire 508C

3

	CED	BW	WW	YW	MA	CEM	SC	ST	DOC	CW	RE	YG	MS	SMTI
EPD	6	2.8	70	112	23	6	1.08	-	9	41	0.59	0.01	0.44	67.28
%Rank	65	80	25	15	75	50	25	-	90	10	30	95	10	10

LH RODEMASTER 338R
OKSU THE PROFIT 3401
 OKSU EXCITEMENT 0406

S A V PIONEER 7301
EBFL SAN JOSE 170X
 TMCK SAN JOSE 170U

JCL LODESTAR 27L
 VERMILION E BLACKBIRD9546
 LKCC EXPRESSWAY 193C
 OKSU MS PUNCH 902X
 SAV FINAL ANSWER 0035
 S A V BLACKBIRD 5297
 G A R PREDESTINED
 MAGS SAN JOSE



Morris



MAGS Manuela, maternal grandam of Lot 4.

PB Limousin (100) Cow DP / DB OMEG 041Y NPF 1996482 04.20.11

OMEG Take A Look

4

EPD	CED	BW	WW	YW	MA	CEM	SC	ST	DOC	CW	RE	YG	MS	SMTI
4	3.2	64	97	28	4	0.42	12	15	33	0.04	-0.07	-0.17	43.8	
%Rank	90	85	45	40	80	85	85	70	30	>95	80	65	70	

KAJO RESPONDER 120R
AHCC WESTWIND W544
 AHCC MISS WULF HUNT R544

MAGS LITTLE BROTHER
BOJD PROPER LADY 576P
 MAGS MANUELA

JCL LODESTAR 27L
 KAJO SHERYL SWOOPS 11H
 COLE WULF HUNT
 AHCC MISS OUTCROSS N844
 EXLR DAKOTA 353G
 DJ ESSENCE
 EXLR LIMITED EDITION 765J
 AUTO CITY NIGHTS 214H

LOT 4

P.E. 12.1.15 to 6.1.16 to WLR Game of Thrones
 Purebred, double polled and double black

OMEG Take A look is a featured female of the sale and rightfully so
 She is as good of a purebred Limousin female you will ever find in the breed
 Sired by the now deceased but the ever amazing purebred sire AHCC Westwind W544

Her dam is a once big league show female for the Bohi Family and a daughter of MAGS Little Brother and from the famed and now deceased
 MAGS Manuela

We can describe what we think of this female in many words but we would just as soon welcome you to the ELCX headquarters so you can
 view her for yourself



LOT 5

MAGS WLR Usual Suspect, maternal sib to Lot 5.

A.I. 12.5.15 to ELCX BEST BUY 079 X; P.E. 12.15.15 to 3.19.16 to MAGS Xyloid 3712X

Here is another great MAGS Phantom Prize progeny. Her maternal sister WLR Tainted Love, was the top seller in a past Wies sale at \$15,000 for half that sold to Edwards L & C and Heart Felt Farms, Gettysburg, PA. She is the 2011 Denver Reserve National Champion Female. Her half brother and son of MAGS Phantoms Prize, MAGS WLR Usual Suspect is the breed's Triple Crown Winner and a proud representative of Wies Limousin and Magness Land & Cattle. Another maternal brother is the 2012 All American Futurity grand champion bull AUTO Grand Am. He is the leading sire for Salt Creek Cattle & Genetics and Massey Limousin. To have a daughter of MAGS Phantoms Prize is a desire by many in this breed since they have done so well for so many.

-This 50% Lim-Flex daughter of SS Incentive 9J17 is so cool. We love her moderation in frame, heaviness of bone and her structural correctness. She is very sound in her movement and has that great show look to her like so many of the MAGS Phantoms Prize progeny

Lim-Flex (50) Cow HP / Black BJLR 618Z LFF 2015204 03.27.12

WLR Pistol Annie

5

EPD	CED	BW	VW	YW	MA	CEM	SC	ST	DOC	CW	RE	YG	MS	\$MTI
8	2.2	74	119	20	7	0.95	12	10	44	1.24	-0.34	0.07	57.78	
%Rank	35	60	10	3	85	30	20	75	80	4	1	25	25	15

SS OBJECTIVE T510 0T26
SS INCENTIVE 9J17
 SS MISS FRAN P142 B76

GPFF BLAQUE RULON
MAGS PHANTOMS PRIZE
 ALCM KOOL TUNES

SS TRAVELER 6807 T510
 SS MISS RITA R011 7R8
 BASIN FRANCHISE P142
 SS MISS PREISCILLA E161 E
 BLACK DIAMOND
 QUAIL RUN RAMONA BP
 EXLR DAKOTA 353G
 NP ERROLLINE 250E



Morris



SBLX Underthecovers 201U, dam of Lot 6.

Lim-Flex (50) Cow DP / DB SBLX 201X LFF 1954700 05.02.10

SBLX Xabat **6**

	EPD	CED	BW	WW	YW	MA	CEM	SC	ST	DOC	CW	RE	YG	MS	\$MTI
	8	1.9	58	88	23	8	0.7	-	16	25	0.38	-0.1	0.3	59.21	
%Rank	35	55	55	45	70	20	40	-	55	45	60	80	15	15	

COLE WOLF HUNT
LVLS 8211U
 SILVER OAK 616 061

G A R PREDESTINED
SBLX UNDERTHECOVERS 201U
 ELMW GINNIE P58G

COLE FIRST DOWN 46D
 COLE CATALINA 3309C
 RITO 616 OF 4B20 6807
 S O BLUEBIRD 0400
 B/R NEW DESIGN 036
 G A R EXT 4206
 TCDT MR T.D'S POWER PACK
 ELMW POLLED ECSTASY 67E

LOT 6

P.E. 12.1.15 to 6.1.16 to WRL Game of Thrones

Here is one of the finest females to sell at auction in a long time. We are proud to have her as a featured lot in this sale.

SBLX Xabat is a daughter of SBLX Underthecovers 201U, a daughter of GAR Predestined that has continued to amaze us with her producing ability and all that she has to offer. Her dam is the famed ELMW Ginnie P58G, the dam of the great Carrousel's Pina Colada, Carrousel's Peaches and countless others. Ginnie has been the national gold medal dam twice and is one of the breed's greatest donors. SBLX Underthecovers daughter SBLX Zane is the \$55,000 valued heifer now owned by Edwards Land & Cattle Co. and is shown by our good friends at Wies Limousin. She is a daughter of MAGS Winston and is one of the finest red and polled females in our breed. ELCX Under Cover 201Y was a top selling herd sire in the '13 Edwards Spring sale at \$7500 going to Stewart Stables and Massey Limousin in Kentucky. SBLX Underthecovers 201U is a big league donor and a top 50% Lim-Flex.

SBLX Zabat stands on a great foundation and is very sound in her structure and flawless in her design and profile. If you are in need a female that has it all stacked in her favor to continue greatness then consider this amazing specimen.





Morris

LOT 7

P.E. 12.30.15 to 6.2.16 to Woodside Rito 4050 of OM3

25% Lim-Flex, double polled and double black

This excellente females ranks in the top 1% of the breed for CEM with an 11, top 2% of the breed for marbling with a .62 and \$MTI with a 74.52. She also ranks in the top 10% of the breed for CED with a 13, birth with a -1.0 and top 15% for ribeye with a .71

If you admire the blend of purebred Angus with the Lim-Flex genetics then we highly suggest that you take a look her at this remarkable female

Lim-Flex (25) Cow DP / DB ELCX 152B LFF 2090354 10.02.14

ELCX Better Impress Me 152 B

7

	CED	BW	VWV	YW	MA	CEM	SC	ST	DOC	CW	RE	YG	MS	\$MTI
EPD	13	-1	67	108	26	11	0.91	-	13	32	0.71	-0.2	0.62	74.52
%Rank	10	10	35	20	45	1	35	-	80	30	15	50	2	2

- | | |
|---------------------------|---------------------------|
| CONNEALY REFLECTION | BON VIEW NEW DESIGN 878 |
| CONNEALY IMPRESSION | HAPPY GRILL OF CONANGA 62 |
| PEARL PAMMY OF CONANGA 19 | VERMILION DATELINE 7078 |
| | PEARL JAM OF CONANGA 6114 |
| LH RODEMASTER 338R | JCL LODESTAR 27L |
| MCBN YOU GOTTA SEE ME 152 | VERMILION E BLACKBIRD9546 |
| SBLX UTOPIAN QUEEN 1305U | G A R PREDESTINED |
| | AUTO ELITE 270F |



Morris

LOT 8

Lim-Flex (56) Bull HP / HB ELCX 502C LFM 2094779 02.12.15

ELCX Command Tower 502C ET 8

EPD	CED	BW	WW	YW	MA	CEM	SC	ST	DOC	CW	RE	YG	MS	SMTI
11	0.8	66	103	24	8	1.2	18	24	33	0.22	0.04	0.42	65.03	
%Rank	20	35	40	30	65	20	15	25	30	30	90	95	10	10

LH WAR HERO 195W
MAGS ANCHOR
 MGS XIPHOPAGOUS

MYTTY IN FOCUS
SBLX UNKNOWN 104U
 MAGS MANUELA

JCL LODESTAR 27L
 VERMILION ERICA LADY 1229
 DHVO DEUCE 132R
 MAGS SALINA
 S A F FOCUS OF E R
 MYTTY COUNTESS 906
 EXLR LIMITED EDITION 765J
 AUTO CITY NIGHTS 214H

BW: 72 lbs.; WW: 715 lbs.; YW: 1,218 lbs.

56% Lim-Flex, homozygous polled and homozygous black

Here is one of the finest herd sire prospects to ever represent the ELCX prefix

Here is a son of SBLX Unknown 104U, the \$37,500 valued donor that is owned by Edwards Land & Cattle Co. and Pinegar Limousin, Springfield, MO. She is a daughter of MYTTY In Focus and from the famed Sugar Bush Cattle, Inc. donor MAGS Manuela. This young beef bull is extremely big footed, very soft in his pasterns and very fluid in his movement. We love and admire his cleanliness up through his front end, his strength of topline and beautiful profile and balance. He has a 0.8 for birth, 103 for yearling weight, 24 for milking ability, .42 for marbling and 65.03 for SMTI.

MAGS Anchor, a son of LH War Hero 195W is the sire of this young beef bull. He was a leading member for the Magness L & C grand champion carload



Lim-Flex (68) Cow Polled / HB ELXC 326A LFF 2042654 04.25.13

ELCX Ella 326A

9

	CED	BW	WW	YW	MA	CEM	SC	ST	DOC	CW	RE	YG	MS	\$MTI
EPD	13	-1.1	69	105	27	10	0.95	18	24	30	0.1	-0.01	0.26	60.36
%Rank	10	10	30	25	35	4	35	25	30	40	>95	90	20	20

MAGS THE GENERAL
AUTO CRUZE 132X
 AUTO REBECA 292S

MYTTY IN FOCUS
SBLX UNKNOWN 104U
 MAGS MANUELA

AUTO DOLLAR GENERAL 122R
 EXLR LUVLY 821M
 LESF ASPHALT 9N
 EXLR REBECA 1019P
 S A F FOCUS OF E R
 MYTTY COUNTESS 906
 EXLR LIMITED EDITION 765J
 AUTO CITY NIGHTS 214H

P.E. 12.1.15 to 6.1.16 to WLR Game of Thrones
 68% Lim-Flex, polled and homozygous black
 Here is a breeding piece that any prominent breeding program would appreciate
 She is a full sibling to ELCX Cruze Control 329A, the black and polled 68.8% Lim-Flex herd sire for ELCX and our good friend at Owen Cattle Company.

She is sired by AUTO Cruze 132X, the leading Pinegar sire and son of MAGS The General from the famed AUTO Rebeca 292S. His service is sought after by some of the most progressive cattlemen in the business and the few times it has been offered it has been in high demand. ELCX Cruze Control's dam is SBLX Unknown 104U, the \$37,500 valued donor that is owned by Edwards Land & Cattle Co. and Pinegar Limousin, Springfield, MO. She is a daughter of MYTTY In Focus and from the famed Sugar Bush Cattle, Inc. donor MAGS Manuela.



LOT 9

ELCX Cruze Control 329A, full brother to Lot 9.

Lim-Flex (75) Cow DP / DB ENGD 1187Y LFF 2002183 10.19.11

ENGD 1187Y

10

	CED	BW	WW	YW	MA	CEM	SC	ST	DOC	CW	RE	YG	MS	\$MTI
EPD	9	1.5	63	97	24	6	1.3	17	26	30	0.28	-0.09	0.08	52.79
%Rank	30	45	40	30	60	45	4	35	20	30	80	85	25	25

DHVO DEUCE 132R
CFLX WILD CARD
 JCL PEPPERMINT

MYTTY IN FOCUS
SBLX UNKNOWN 104U
 MAGS MANUELA

GPFF BLAQUE RULON
 AMY JO DHAN 20L
 AUTO BLACK DAKOTA 129J
 JCL PEPPER
 S A F FOCUS OF E R
 MYTTY COUNTESS 906
 EXLR LIMITED EDITION 765J
 AUTO CITY NIGHTS 214H

P.E. 12.7.15 to 6.1.16 to TW Fire N' Ice
 75% Lim-Flex, double polled and double black
 Here is another known daughter of the famed SBLX 201U
 She is sired by the once national top selling herd sire CFLX Wild Card. He is the leading son of the once national champion sire DHVO Deuce 132R and from the famed JCL Peppermint. He is a full sibling in blood to the \$40,000 valued donor CFLX Molly's Image that is now working for Linhart Limousin, Leon, IA



CFLX Wild Card, sire of Lot 10.



SBLX Unknown 104U, dam of Lots 8, 9 & 10.



EF Xcessive Force, sire of Lot 11 embryos.



AUTO Poem 273Y, dam of Lot 11 embryos.



MAGS Yip, sire of Lot 12 embryos.



LFL Upper Crust 0090 X, dam of Lot 12 embryos.

50% Lim-Flex Double Polled Double Black

5 Embryos

11

	CED	BW	WW	YW	MA	CEM	SC	ST	DOC	CW	RE	YG	MS	\$MTI
EPD	9	0.1	68	99	20	9	1.68	6	12	11	0.44	-0.13	0.25	60.24

D A TRAVELER 004 703
EF XCESSIVE FORCE
 CFLX MOLLYS IMAGE

S A V BISMARCK 5682
AUTO POEM 273Y
 MAGS PHANTOMS PRIZE

S A V 8180 TRAVELER 004
 ROSEWOOD ERICA 5010
 DHVO DEUCE 132R
 JCL PEPPERMINT
 G A R GRID MAKER
 S A V ABIGALE 0451
 GPF BLAQUE RULON
 ALCM KOOL TUNES

Oh my goodness ... take a look here at what the ELCX program has created!
 These embryos are sired by the many times champion EF Xcessive Force
 -They are from the full sister to the \$50,000 valued sire AUTO Grand Am that won the 2012 All American Futurity show and is now the leading sire for Salt Creek and Massey. He is also a full sister

Also the dam of Bullet Proof, the AAF Champion Bull and AUTO Black Honey 267Y, the \$14,000 top selling female at the 2012 Heart of Missouri sale for Pingar and was working for Englewood Farm, Lancaster, KY. She is also a maternal sister to MAGS WLR Usual Suspect, the breeds latest triple crown winning bull for Wies and Magness. Her mating to the national champion sire EF Xcessive Force will bring huge dividends to the new owner of these embryos.

73% Lim-Flex Homozygous Polled Homozygous Black

5 Embryos

12

	CED	BW	WW	YW	MA	CEM	SC	ST	DOC	CW	RE	YG	MS	\$MTI
EPD	9	1.0	74	116	27	12	0.7	18	5	41	0.27	0.02	0.22	60.15

MAGS THE GENERAL
MAGS YIP
 AUTO CARMINDA 656S

MAGS USDA CHOICE
LFL UPPER CRUST 0090 X
 LFL UPPER CRUST 8083 U

AUTO DOLLAR GENERAL 122R
 EXLR LUVLY 821M
 JCL LODESTAR 27L
 AUTO CARMINDA 872P
 AUTO DOLLAR GENERAL 122R
 HA LADY 1079
 LH RODEMASTER 338R
 TYCU 1009S

-Sired by the leading purebred sire MAGS Yip that has taken the breed by storm with the success of his daughters in production
 -From the partnership donor with Lawrence Family Limousin. She is the big numbered daughter of MAGS USDA Choice. She ranks in the top 3% of the breed in WW, YW and total maternal, top 4% for CW, top 5% for CEM and top 10% for \$MTI

62.5% Lim-Flex Double Polled Homozygous Black

5 Embryos

13

EPD	CED	BW	WW	YW	MA	CEM	SC	ST	DOC	CW	RE	YG	MS	SMTI
9	-0.7	60	92	24	8	1.4	10	14	24	-0.19	0.11	0.22	55.00	

D A TRAVELER 004 703
EF XCESSIVE FORCE
 CFLX MOLLYS IMAGE

JCL LODESTAR 27L
DFLC HBHPC 1S
 DFLC HBPC 25L

S A V 8180 TRAVELER 004
 ROSEWOOD ERICA 5010
 DHVO DEUCE 132R
 JCL PEPPERMINT
 HUNTS HI-LITER 245G
 LOGAN'S CHEERLEADER 280G
 DFLC DOUBLE SHOT BPB 41E
 DALTONS EDITH ERICA 250

These future calves will be very exciting to see at weaning time when they will be ready to hit showbarn or the market place.
 Sired by the national champion bull EF Xcessive Force and leading sire for Linhart Limousin, Thomas & Son and Etherton Farms.
 From the big league Edwards donor DFLC 1S, the dam of the 2013 National Champion Limousin Female, ELCX Twilight.



ELCX Twilight, the 2013 National Champion Female and maternal sid to Lots 13 & 14.

87.5% PB Limousin Homozygous Polled Homozygous Black

5 Embryos

14

EPD	CED	BW	WW	YW	MA	CEM	SC	ST	DOC	CW	RE	YG	MS	SMTI
9	0.8	64	99	24	6	0.63	19	14	28	0.03	-0.04	-0.1	46.58	

AHCC WESTWIND W544
ENGD ZIP LINE 2515Z
 RTTB ROYALTY 2505R

JCL LODESTAR 27L
DFLC HBHPC 1S
 DFLC HBPC 25L

KAJO RESPONDER 120R
 AHCC MISS WULF HUNT R544
 GPFF BLAQUE RULON
 WULFS JULIETTE 9025J
 HUNTS HI-LITER 245G
 LOGAN'S CHEERLEADER 280G
 DFLC DOUBLE SHOT BPB 41E
 DALTONS EDITH ERICA 250

These future calves are purebred and double homozygous
 Sired by ENGD Zip Line, the leading purebred and many times show champion bull
 From DFLC 1S, the leading donor and dam of the 2013 National champion Female, ELCX Twilight
 These future calves will instantly have the notoriety and promotion needed to get attention for your program



DFLC HBHPC 1S, dam of Lot 13 & 14 embryos.



ENGD Zip Line 2515Z, sire of Lot 14.



LOT 15

Fall Bred Females

Lim-Flex (62) Cow DP / DB ELCX 1A LFF 2082647 03.11.13

ELCX 1A **15**

	CED	BW	WW	YW	MA	CEM	SC	ST	DOC	CW	RE	YG	MS	SMTI
EPD	7	2.2	74	110	32	8	0.81	-	6	38	0.38	0	0.34	64.57
%Rank	45	60	10	10	15	20	30	-	90	10	60	95	10	10

MAGS UNHOOKS
LVLS YUKON 798Y
 LVLS 798R

BASIN FRANCHISE P142
 MAGS MARQUEE
 BON VIEW NEW DESIGN 1407
 BLACKCAP V935

AUTO DOLLAR GENERAL 122R
MCBN YEVA 111Y
 MCBN WYNDA 909W

LVLS SECRET WEAPON 4408K
 AUTO KYRIA 232K
 MAGS SAVAGE
 MISS SYES RESOLUTION 855N

P.E. 12.1.15 to 6.1.16 to WLR Game of Thrones
 62% Lim-Flex, double polled and double black
 ELCX 1A is a sale feature and one of the top females of the sale offering
 She is sired by the leading herd sire for Milam Cattle Company, LVLS Yukon 798Y
 Her dam is a big numbered daughter of the breed leading purebred sire AUTO Dollar General 122R
 This female ranks in the top 4% of the breed for total maternal with a 69, top 10% for WW with a 74, YW with a 110, CW with a 38, MB with a .34 and SMTI with a 64.57



LOT 16

Lim-Flex (50) Cow DP / DB BMAS 3086A LFF 2037339 05.01.13

SPRING CRKS Ta Da 3086Z **16**

	CED	BW	WW	YW	MA	CEM	SC	ST	DOC	CW	RE	YG	MS	SMTI
EPD	12	0.6	86	137	16	10	0.97	12	18	52	0.4	-0.05	0.16	62.46
%Rank	10	30	1	1	95	5	20	75	45	1	60	90	20	10

BR MIDLAND
EXAR SUNDANCE 6216
 WK PRINCESS 1194

WULFS LEVERAGE 9285L
SPRNG CRKS TADA 7039T
 SPRING CREEKS 959J

TWIN VALLEY PRECISIONE161
 BR ROYAL LASS 7036-19
 BON VIEW NEW DESIGN 1407
 WK PRINCESS 8401
 COLE WULF HUNT
 WULFS JUDITH 9285J
 EXLR 066G
 GUND TAMMY 226A

P.E. 12.1.15 to 6.1.16 to WLR Game of Thrones
 50% Lim-Flex, double polled and double black
 This gorgeous female ranks in the top 1% of the breed for WW with an 86, YW with a 137 and CW with a 52, top 5% for CEM with a 10 and top 10% with a 62.46 and CED with a 12
 We admire this female up through her head and neck and is very feminine
 She is big in her bone structure and has the length of body and overall capacity needed to make a top investment for any breeder

BOHI Top Dollar 7144T daughters

Here are four daughters of BOHI Top Dollar 7144T, the son of AUTO Dollar General 122R and from the national champion female Carrousel's Pina Colada. AUTO Dollar General 122R is one of the breed's leading EPD sires of all time and now makes his home at GV Limousin, Garnett, KS. Carrousel's Pina Colada is the leading donor for P Bar S Ranch, Sand Springs, Ok and Edwards Limousin, Higginsville, MO. She is recognized as one of the finest and most prominent donor cows of all time. The genetics and performance of BOHI Top Dollar 7144T has been positively influenced in the ELCX program over the last few years and these young daughters are proud representatives of him.



BOHI Top Dollar 7144T, sire of Lots 17 - 20.

PB Limousin (100) Cow DP/DB ELCX 6B NPF 2089560 12.01.14

ELCX Go Ahead 6 B 17

	CED	BW	WW	YW	MA	CEM	SC	ST	DOC	CW	RE	YG	MS	SMTI
EPD	5	2.6	64	87	30	7	0.65	17	14	25	0.4	-0.19	-0.12	46.26
%Rank	80	75	45	65	15	35	65	35	75	55	65	50	55	60

AUTO DOLLAR GENERAL 122R LVL'S SECRET WEAPON 4408K
BOHI TOP DOLLAR 7144T AUTO KYRIA 232K
 CARROUSELS PINA COLADA AUTO BLACK DAKOTA 129J
 ELMW GINNIE P58G
 GPF BLAQUE RULON BLACK DIAMOND
DFLC BPC 6R QUAIL RUN RAMONA BP
 GPF BLACK POLLED KAYE SOGF SPECIAL K 247B
 GPF SIREN

P.E. 12.30.15 to 6.2.16 to Woodside Rito 4050 of 0M3
 Purebred, double polled and double black

Lim-Flex (50) Cow HP/DB ELCX 102B LFF 2089684 11.16.14

ELCX Bank Teller 102B 18

	CED	BW	WW	YW	MA	CEM	SC	ST	DOC	CW	RE	YG	MS	SMTI
EPD	7	1	63	100	28	10	1.04	14	15	30	0.22	0.02	0.58	70.02
%Rank	55	40	50	35	30	4	25	770	70	40	90	95	3	4

AUTO DOLLAR GENERAL 122R LVL'S SECRET WEAPON 4408K
BOHI TOP DOLLAR 7144T AUTO KYRIA 232K
 CARROUSELS PINA COLADA AUTO BLACK DAKOTA 129J
 ELMW GINNIE P58G
 G A R PREDESTINED B/R NEW DESIGN 036
SOUTHERN BLACKCAP 76103 G A R EXT 4206
 CALLAWAYS BLACKCAP 0798 N BAR EMULATION EXT
 G A R SCOTCH CAP 867

P.E. 12.30.15 to 3.19.16 to ELCX Benchwarmer 363B
 50% Lim-Flex, double black and homozygous polled



LOT 19

PB Limousin (100) Cow DP/DB ELCX 160B NPF 2089575 12.01.14

ELCX Bojangles 106B 19

	CED	BW	WW	YW	MA	CEM	SC	ST	DOC	CW	RE	YG	MS	\$MTI
EPD	3	3	64	93	30	8	0.57	15	16	29	0.24	-0.12	-0.08	47.32
%Rank	95	85	45	50	15	20	75	60	65	40	90	70	50	55

AUTO DOLLAR GENERAL 122R
BOHI TOP DOLLAR 7144T
 CARROUSELS PINA COLADA

LVLS SECRET WEAPON 4408K
 AUTO KYRIA 232K
 AUTO BLACK DAKOTA 129J
 ELMW GINNIE P58G
 AUTO BLACK DAKOTA 129J
 JCL MAYBERRY
 WULFS HANDYMAN 4253H
 SUNSHINE

P.E. 12.30.15 to 3.19.16 to ELCX Benchwarmer 363B
 Purebred, double polled and double black



LOT 20

Lim-Flex (50) Cow HP / DB ELCX 058B LFF 2090353 11.19.14

ELCX Black Dollar 058 B 20

	CED	BW	WW	YW	MA	CEM	SC	ST	DOC	CW	RE	YG	MS	\$MTI
EPD	9	1.6	63	104	28	10	0.94	-	13	34	0.4	-0.03	0.48	66.98
%Rank	35	55	50	25	30	4	35	-	80	25	65	90	5	10

AUTO DOLLAR GENERAL 122R
BOHI TOP DOLLAR 7144T
 CARROUSELS PINA COLADA

LVLS SECRET WEAPON 4408K
 AUTO KYRIA 232K
 AUTO BLACK DAKOTA 129J
 ELMW GINNIE P58G
 CONNEALY LEAD ON
 ALTUNE OF CONANGA 6104
 V D A R LUCYS BOY
 DAVIS YR BLACKBIRD 558H

P.E. 12.30.15 to 3.19.16 to ELCX Benchwarmer 363B
 50% Lim-Flex, double black and homozygous polled

MAGS Xyloid daughters



MAGS Xyloid, sire of Lots 21 & 22.



ELCX Edith Erica 128Y, dam of Lot 21



Morris

% Limousin (81) Cow DP/DB CMIL 128B NXF 2066760 09.012.14

MCC Erica 128B

21

	CED	BW	WW	YW	MA	CEM	SC	ST	DOC	CW	RE	YG	MS	\$MTI
EPD	7	2.6	60	91	16	8	0.55	12	20	28	-0.1	0.05	0.15	53.07
%Rank	55	75	65	55	>95	20	75	85	50	45	>95	95	25	35

DHVO DEUCE 132R
MAGS XYLOID
 BOHI RHONDA 314R

GPFF BLAQUE RULON
 AMY JO DHAN 20L
 EXLR NEW GENERATION 071M
 DAVIS ROSETTA 9514

MAGSWL USUAL SUSPECT 538U
ELCX EDITH ERICA 128Y
 DFLC HBHPC 16S

MAGS SASQUATCH
 MAGS PHANTOMS PRIZE
 JCL LODESTAR 27L
 DFLC HBPC 25L

P.E. 12.30.15 to 3.19.16 to ELCX Benchwarmer 363B

81% Limousin, double polled and double black

This female represents a very strong and proven pedigree. She is sired by the once All American Futurity Supreme champion bull MAGS Xyloid.

Her dam is a daughter of the Triple Crown winning sire MAGS WLR Usual Suspect and from a daughter of the famed DFLC 1S, the dam of the once national champion female ELCX Twilight



Morris



NEW YORK

AUTO Christy 8889R, dam of Lot 22.

Lim-Flex (62) Cow Polled / HB ELCX 273Z LFF 2025403 09.04.12

ELCX Chrissie 273Z

22

	CED	BW	WW	YW	MA	CEM	SC	ST	DOC	CW	RE	YG	MS	\$MTI
EPD	9	1.6	57	94	17	7	0.65	12	18	29	0.4	-0.13	0.1	52.08
%Rank	35	55	75	50	>95	35	65	85	55	40	65	70	30	40

DHVO DEUCE 132R
MAGS XYLOID
 BOHI RHONDA 314R

GPFF BLAQUE RULON
 AMY JO DHAN 20L
 EXLR NEW GENERATION 071M
 DAVIS ROSETTA 9514

EXAR NEW DESIGN 3903
AUTO CHRISTY 8889R
 AUTO CHRISTY 853N

BON VIEW NEW DESIGN 1407
 RR MISS EMULOUS 6391
 AUTO NO MONEY DOWN 147J
 AUTO AERIELA 253G

P.E. 5.13.16 to 8.3.16 to WLR Reload

Her dam is AUTO Christy 8889R, the breed leading donor for ELCX and our good friends at Milam Cattle Co., Olmstead, KY. Andrew Milam showed a daughter of Christy and maternal sister to this heifer to AUTO Christy 273Z, AUTO Mornin to win reserve grand champion female of the 2012 National Junior Heifer show. Another daughter ELCX Christy, the leading donor for Wies and Edwards Land & Cattle Co dominated the shows in '14 and '15 by winning the following ...

- 2014 Southeast Summer Classic Grand Champion Female
- 2014 All-American Futurity Division IV Champion Female
- 2014 American Royal Show Division Champion Female
- 2014 NAILE Division Champion Female
- 2015 All-American Futurity Grand Champion Cow-Calf Pair

Her sire is the once All American Futurity Supreme Champion Bull MAGS Xyloid, a son of DHVO Deuce from the deceased BOHI Rhonda 314R. He is the leading herd sire in the Edwards Land & Cattle Co. program

This is your chance to infuse genetics from one of the breed's finest Lim-Flex females in ELCX Christy 273Z.

AUTO Will Power daughters

Sire of Lots 23 - 25.



AUTO Christy 8889R,
dam of Lot 23.



RAY COPE



Morris

Lim-Flex (43) Cow DP/DB ELCX 322A LFF 2043001 04.21.13

ELCX Secret Power 322A

23

	CED	BW	WW	YW	MA	CEM	SC	ST	DOC	CW	RE	YG	MS	SMTI
EPD	9	0.3	57	98	26	7	0.9	16	6	29	0.63	-0.22	0.32	61.01
%Rank	35	25	75	40	45	35	35	45	95	20	25	45	15	15

G A R PREDESTINED
AUTO WILL POWER 160X
 AUTO REBECA 292S

B/R NEW DESIGN 036
 G A R EXT 4206
 LESF ASPHALT 9N
 EXLR REBECA 1019P
 BON VIEW NEW DESIGN 1407
 RR MISS EMULOUS 6391
 AUTO NO MONEY DOWN 147J
 AUTO AERIELA 253G

EXAR NEW DESIGN 3903
AUTO CHRISTY 8889R
 AUTO CHRISTY 853N

P.E. 12.1.15 to 6.1.16 to WLR Game of Thrones

A definite feature of this sale is this amazing spring bred heifer and future donor in the making. She is a 43.8% Lim-Flex black, homozygous polled first calf heifer. She is a proud representative of the extensive embryo transplant program at Edwards Land & Cattle Co. She is sired by the \$35,000 valued half interest sire AUTO Will Power 160X. He is a son of GAR Predestined and back to AUTO Rebeca 292S. Her dam is AUTO Christy 8889R, the breed leading donor for ELCX and our good friends at Milam Cattle Co., Olmstead, KY. Andrew Milam showed a daughter of Christy and maternal sister to this heifer selling, AUTO Mornin to win reserve grand champion female of the 2012 National Junior Heifer show. As you can tell by her picture and has you will see on sale day she is almost near perfect from any angle that you look at her.

Lim-Flex (43) Cow HP / DB ELCX 231B LFF 2089591 12.30.14

ELCX Liberty 231 B

24

	CED	BW	WW	YW	MA	CEM	SC	ST	DOC	CW	RE	YG	MS	SMTI
EPD	9	1	62	102	26	8	0.7	11	8	33	0.41	-0.07	0.49	67.21
%Rank	35	40	55	30	45	20	55	90	95	30	60	80	5	10

G A R PREDESTINED
AUTO WILL POWER 160X
 AUTO REBECA 292S

B/R NEW DESIGN 036
 G A R EXT 4206
 LESF ASPHALT 9N
 EXLR REBECA 1019P
 BT CROSSOVER 758N
 MAGS STRAWBERRY
 EF SMACK DOWN 764S
 VVLC BLACK ERICA 408R

MAGS WINSTON
ELCX ERICA 231Y
 GPFX BLAQUE ERICA

P.E. 12.30.15 to 6.2.16 to Woodside Rito 4050 of 0M3

43% Lim-Flex, double black and homozygous polled

There is nothing more beautiful than a moderate framed, easy doing and big numbered Lim-Flex female and ELCX 231B fit that bill

Sired by the \$30,000 valued sire AUTO Will Power 160X and from a daughter of the now deceased MAGS Winston from the once big league donor GPFX Blaque Erica .

Limi-Flex (56) Cow HP/HB ELCX 657B LFF 2089573 12.07.14

ELCX Power Puff 657 B 25

	CED	BW	WW	YW	MA	CEM	SC	ST	DOC	CW	RE	YG	MS	\$MTI
EPD	8	0.8	60	96	24	6	0.95	15	11	29	0.4	-0.11	0.3	60.06
%Rank	45	35	65	45	65	50	35	60	85	40	65	75	15	20

G A R PREDESTINED
AUTO WILL POWER 160X
 AUTO REBECA 292S

CFLX WILD CARD
RVDR XTRA SHY 657X
 PBRs TIMELESS 247T

B/R NEW DESIGN 036
 G A R EXT 4206
 LESF ASPHALT 9N
 EXLR REBECA 1019P
 DHVO DEUCE 132R
 JCL PEPPERMINT
 JCL LODESTAR 27L
 SEDGWICKS BLACKAP 4364

P.E. 12.30.15 to 3.19.16 to ELCX Benchwarmer 363B

56% Lim-Flex, homozygous polled and homozygous black

Here is a top marbling and performance female from the heart of the Edwards Land & Cattle Co. program

Her dam is a daughter of the once national sale top selling bull CFLX Wild Card and from a daughter of the multiple trait leading sire JCL Lodestar 27L

Lim-Flex (39) Cow HP/HB ELCX 292B LFF 2089571 10.04.14

ELCX Giggle 292 B 26

	CED	BW	WW	YW	MA	CEM	SC	ST	DOC	CW	RE	YG	MS	\$MTI
EPD	9	0.9	67	103	24	7	1.2	12	13	32	0.82	-0.25	0.41	67.17
%Rank	35	40	35	30	65	35	15	85	80	30	10	35	10	10

S A V BISMARCK 5682
AUTO GRAND AM 156Y
 MAGS PHANTOMS PRIZE

G A R PREDESTINED
TW BELLA 2919Y
 EXLR SUGAR 154R

G A R GRID MAKER
 S A V ABIGALE 0451
 GPFF BLAQUE RULON
 ALCM KOOL TUNES
 B/R NEW DESIGN 036
 G A R EXT 4206
 EXLR RIGHT ON TIME 106J
 EXLR SUGAR N012

P.E. 12.30.15 to 3.19.16 to ELCX Benchwarmer 363B

39% Lim-Flex, homozygous polled and homozygous black

Here is a daughter of the \$50,000 valued sire AUTO Grand Am that won the 2012 All American Futurity show and is now the leading sire for Salt Creek Cattle and Massey Limousin. He is also a full sister to AUTO Black Honey 267Y, the \$14,000 top selling female at the 2012 Heart of Missouri sale for Pinegar and now working for Englewood Farm, Lancaster, KY. She is also a maternal sister to MAGS WLR Usual Suspect, the breeds latest triple crown winning bull for Wies and Magness.

Her dam is a big numbered daughter of GAR Predestined, TW Bella 2919Y



Page 21

LOT 26

Lim-Flex (50) Cow HP/DB BMAS 344B LFF 2062359 09.16.14

SPRNG CRKS Forever Lady 27

	CED	BW	WW	YW	MA	CEM	SC	ST	DOC	CW	RE	YG	MS	\$MTI
EPD	10	0.9	72	116	26	9	0.85	10	20	41	0.48	-0.1	0.37	66.7
%Rank	25	40	20	10	45	10	45	95	50	10	50	75	10	10

WULFS SPRING LOADED 3158S
WULFS WARRIOR 9302W
 WULFS JOY BELLS 9202J

BASIN FRANCHISE P142
EXAR FOREVER LADY 82079
 EXAR FOREVER LADY 5563

COLE WULF HUNT
 WULFS NADINE 3158N
 WULFS EVAN 9052E
 WULFS ENJOYABLE 5009E
 C A FUTURE DIRECTION 5321
 BASIN CHLOE 812L
 EXAR NEW LOOK 2971
 MAPLE LANE FOREVER LADY 9

P.E. 12.30.15 to 3.19.16 to ELCX Benchwarmer 363B

50% Lim-Flex, double black and homozygous polled

This female ranks in the top 10% of the breed for YW with a 116, CEM with a 9, CW with a 41, MB with a .37 and \$MTI with a 66.17

This female was created by blending the best in purebred Limousin with the best in purebred Angus. She is sired by Wulf's Warrior and from a daughter of Basin Franchise



EXAR Forever lady 82079, dam of Lot 27.



Morris

LOT 28

Limi-Flex (50) Cow DP/Black ELCX 325B LFF 2089686 12.25.14

ELCX Christmas Day 325 B 28

	CED	BW	VWV	YW	MA	CEM	SC	ST	DOC	CW	RE	YG	MS	\$MTI
EPD	2	3.1	56	79	23	2	0.71	12	5	22	0.37	-0.17	0.01	48.44
%Rank	>95	85	80	80	75	95	55	85	95	70	70	60	40	50

WULF'S COUNT DOWN 9251C LKCC TOMAHAWKS TOUCHDOWN
EXLR DAKOTA 353G MISS WOLFETTE 9051X
 CANE RIDGE DAPHNE 011D WULFS RAMBLER 8400X
 YKCC MISS IRONSIDE 110NS
 MILLCREEK DIVERSITY GAR SLEEP EASY 1009
P C F PRECISION DIV 325 MILLCREEK TRAVEL LASS
 NUTBUSH PRECISION 786 160 LEACHMAN SAUGAHATCHEE3000
 G A R PRECISION 786

P.E. 12.30.15 to 3.19.16 to ELCX Bench-Warmer 363B

50% Lim-Flex, black and double polled

You are going to love this female not only in the picture but also on sale day

Sired by the breed popular EXLR Dakota 353G and from a purebred Angus female sired by Millcreek Diversity

We love the femininity, length of neck and cool front end found in this female

She is sound in her structure and very strong, level and clean in her lines

Limi-Flex (75) Cow DP/Black ELCX 67B LFF 2089559 11.11.14

ELCX Try Again 67 B 29

	CED	BW	VWV	YW	MA	CEM	SC	ST	DOC	CW	RE	YG	MS	\$MTI
EPD	10	0.1	59	89	28	11	0.19	9	8	23	0.27	-0.11	0.13	53.43
%Rank	25	25	70	60	30	1	>95	>95	95	65	85	75	30	35

MAGS SASQUATCH EXLR NEW GENERATION 071M
MAGSWL USUAL SUSPECT 538U MAGS FRUITFUL 487M
 MAGS PHANTOMS PRIZE GPFF BLAQUE RULON
 ALCM KOOL TUNES
 MAGS WINSTON BT CROSSOVER 758N
ELCX YES 67 Y MAGS STRAWBERRY
 ELCX 67 W CRSL 5064R
 AA 5295 IDEAL 164 FCA

P.E. 12.30.15 to 6.2.16 to Woodside Rito 4050 of OM3

75% Lim-Flex, black and double polled

Sired by the leading red and homozygous polled sire MAGS WLR Usual Suspect. He is also the Triple Crown Winning sire for Magness and Wies

Her dam is a daughter of MAGS Winston, the now deceased but very popular A.I. sire in the breed



MAGS WL Usual Suspect 538U, sire of Lot 29.

Limi-Flex (50) Cow DP/HB CMIL 2731B LFF 2066761 11.01.14

MCC Rosetta 2731B 30

	CED	BW	VWV	YW	MA	CEM	SC	ST	DOC	CW	RE	YG	MS	\$MTI
EPD	8	1.6	72	112	23	7	1.02	-	11	39	0.33	0	0.32	63.35
%Rank	45	55	20	15	75	35	25	-	85	15	75	90	15	15

MAGS UNHOOKS BASIN FRANCHISE P142
LVLS YUKON 798Y MAGS MARQUEE
 LVLS 798R BON VIEW NEW DESIGN 1407
 BLACKCAP V935
 DHVO DEUCE 132R GPFF BLAQUE RULON
MAGS XANTHOPSIAS AMY JO DHAN 20L
 BOHI RHONDA 314R EXLR NEW GENERATION 071M
 DAVIS ROSETTA 9514

P.E. 12.30.15 to 6.2.16 to Woodside Rito 4050 of OM3

50% Lim-Flex, double polled and homozygous black

This female bred in the Milam program has a breed leading pedigree and is extreme in her EPD profile

She is a daughter of the big numbered LVLS Yukon and from a full sister to the All American Futurity supreme champion sire MAGS Xyloid

MCC Rosetta 2731B ranks in the top 15% of the breed for YW with a 112, CW with a 39, MB with a .32 and \$MTI with a 63.35



Morris

LVLS Yukon 798Y, sire of Lot 30.

Limi-Flex (75) Cow HP/Black JLWM 444B LFF 2062700 09.14.14

JLWM Bonnie 444B

31

	CED	BW	WW	YW	MA	CEM	SC	ST	DOC	CW	RE	YG	MS	\$MTI
EPD	10	-0.4	66	99	26	10	0.69	12	18	28	0.55	-0.24	0.2	59.08
%Rank	25	15	40	35	45	4	65	85	55	45	35	40	25	20

WULFS SIRLOIN 3172S
WULFS XCELLSIOR X252X
 WULFS MISSIVE 2258M

TJ LEE HILL UPPERDECK U19
JLWM 210Z
 JLWM LA RITA 109X

COLE WULF HUNT
 WULFS NEGOTIABLE 3172N
 LVLS POLLED BLACK JACK
 WULFS FAITH 6501F
 CONNEALY LEADTIME
 JLT J ROCKIN' BONNIE L44
 AUTO DOLLAR GENERAL 122R
 JLWM LA RITA ROUGE 4101P

P.E. 12.30.15 to 6.2.16 to Woodside Rito 4050 of OM3

75% Lim-Flex, black and homozygous polled
 This female offers a unique pedigree which seems to be an outcross to most established lines of cattle in our breed

She is sired by Wulf's Xcellsior X252X and from a JL Farms bred female on the bottom side of her pedigree

She sells bred to the big numbered purebred Angus sire Woodside Rito 4050 of OM3



Wulfs Xcellsior X252X, sire of Lot 31.



TW Fire N Ice daughters

TW Fire N' Ice is the once reserve national champion Lim-Flex sire and now leading sire for the Edwards Land & Cattle Co. program. He is a son of BOHI Titelist 7050T which is a son of AUTO Dollar General 122R from the once national champion female Carrousel's Pina Colada. He is from a very big numbered donor MAGS Upper Saunter that still resides in the ELCX program. The TW Fire N Ice progeny have been very well received in our breed for the extreme numbers and their excellent structure. We think you will be pleased after evaluating these three daughters listed below - Lots 32, 33 and 34.



TW Fire N Ice, sire of Lots 32 - 34.



LOT 32

Lim-Flex (75) Cow DP/DB ELCX 221B LFF 2089685 12.01.14

ELCX Ballet 221 B 32

	CED	BW	VWV	YW	MA	CEM	SC	ST	DOC	CW	RE	YG	MS	SMTI
EPD	9	1.7	66	101	30	9	0.43	13	20	32	0.56	-0.14	0.13	55.81
%Rank	35	55	40	35	15	10	85	80	50	30	35	65	30	30

BOHI TITELIST 7050T
TW FIRE N' ICE
 MAGS UPPER SAUNTER
 MAGS WINSTON
ELCX DARK NIGHT 221Y
 DVFC DARK ANGEL 307K

AUTO DOLLAR GENERAL 122R
 CARROUSELS PINA COLADA
 LH RODMASTER 338R
 MAGS SAUNTER
 BT CROSSOVER 758N
 MAGS STRAWBERRY
 WULFS HANDYMAN 4253H
 SLVL ANGEL COOKIE 140D

P.E. 12.30.15 to 3.19.16 to ELCX Bench-warmer 363B

75% Lim-Flex, double polled and double black



LOT 33

Lim-Flex (37) Cow Horned/B ELCX W355A LFF 2046524 03.20.13

ELCX Lady A W355A 33

	CED	BW	VWV	YW	MA	CEM	SC	ST	DOC	CW	RE	YG	MS	SMTI
EPD	10	-0.2	68	116	29	7	-	-	-	39	0.55	0.04	0.37	64.06
%Rank	20	20	20	5	25	30	-	-	-	10	35	>95	10	10

BOHI TITELIST 7050T
TW FIRE N' ICE
 MAGS UPPER SAUNTER
 STEVENSON MONEYMAKER 1427
44 EVER LADY W355
 THREE TREES EVER LADY S08

AUTO DOLLAR GENERAL 122R
 CARROUSELS PINA COLADA
 LH RODMASTER 338R
 MAGS SAUNTER
 STEVENSON MONEYMAKER R185
 STEVENSON MS 914A D52L
 G A R NEW DESIGN 5050
 TWIN HILLS FOREVER LADY 2

P.E. 12.1.15 to 6.1.16 to WLR Game of Thrones

37% Lim-Flex, horned and black

Limi-Flex (59) Cow DP/DB ELCX 220B LFF 2089589 12.30.14

ELCX Boat Party 220 B 34

	CED	BW	VWV	YW	MA	CEM	SC	ST	DOC	CW	RE	YG	MS	SMTI
EPD	10	0.8	66	100	27	8	1.14	17	24	30	0.39	-0.04	0.2	57.64
%Rank	25	35	40	35	35	20	20	35	30	40	65	85	25	25

BOHI TITELIST 7050T
TW FIRE N' ICE
 MAGS UPPER SAUNTER
 MYTTY IN FOCUS
LVL5 YOKO 2206Y
 LVLS2206R

AUTO DOLLAR GENERAL 122R
 CARROUSELS PINA COLADA
 LH RODMASTER 338R
 MAGS SAUNTER
 S A F FOCUS OF E R
 MYTTY COUNTNESS 906
 COLE POWERHOUSE 15L
 LVLS MS STABILIZER 2206F

P.E. 12.30.15 to 6.2.16 to Woodside Rito 4050 of OM3

59% Lim-Flex, double polled and double black

Limi-Flex (50) Cow Polled/DB JLWM 144Y LFF 2035598 09.14.11

JLWM Mandi 144Y 35

	CED	BW	WW	YW	MA	CEM	SC	ST	DOC	CW	RE	YG	MS	\$MTI
EPD	12	1.9	70	106	28	9	1.32	20	32	35	0.31	-0.1	0.38	65.85
%Rank	10	55	15	15	30	10	4	15	5	15	75	80	10	10

S A F FOCUS OF E R
MYTTY IN FOCUS
 MYTTY COUNTESS 906

COLE WOLF HUNT
JLWM BLACK PEPPER 9127W
 WBBK RED PEPPER 2009M

S A F FAME
 G D A R FOREVER LADY 246
 SITZ ALLIANCE 6595
 BALDRIDGE COUNTESS 357
 COLE FIRST DOWN 46D
 COLE CATALINA 3309C
 SLDJ POLLED EQUITY
 LKAS 0099K

P.E. 12.1.15 to 6.1.16 to WLR Game of Thrones

This polled, double black 50% Lim-Flex female is one of the featured females of the sale offering. She is a daughter of MYTTY In Focus and back to a daughter of COLE WOLF Hunt back to SLDJ Polled Equity

This female offers a low birth of 1.9, yearling weight of 106, milk of 28 and marbling of .38

144Y is very angular up through her front end, strong down her top line and very clean in her lines

She sells bred to the WLR Game of Thrones



LOT 35

% Limousin (84) Cow DP/DB JLWM 447B NXF 2062701 09.09.14

JLWM Jestress 447B 36

	CED	BW	WW	YW	MA	CEM	SC	ST	DOC	CW	RE	YG	MS	\$MTI
EPD	12	-1.4	64	96	23	6	0.59	18	23	25	0.48	-0.15	-0.06	48.49
%Rank	15	10	45	45	75	50	75	25	35	55	50	65	50	50

JCL LODESTAR 27L
RUNL STETSON 850S
 RUNL 72L

KYLD DAYTONA 730T
JLWM 203A
 JLWM JESTRESS 009X

HUTNS HI-LITER 245G
 LOGAN'S CHEERLEADER 280G
 COLE WOLF HUNT
 RUNL 719J
 KRVN NASKAR 013N
 EXLR BLACKBIRD 7182R
 JLWM BLACK ROUGE 6136S
 LEE HILL JESTRESS U11

P.E. 12.30.15 to 6.2.16 to Woodside Rito 4050 of 0M3

84% Limousin, double polled and double black Sired by the JCL Lodestar 27L son, RUNL Stetson 850S. Stetson is the leading sire for one of the breed's largest suppliers of pure-bred Limousin seedstock, Running Creek Ranch in Colorado

Her dam is sired by the many time show champion bull KYLD Daytona 730T

Her mating to the big marbling and growth numbered purebred Angus sire Woodside Rito 4050 will make for a nice coupon for the new owner



Page 25

Lim-Flex (37) Cow Polled/HB JEPS 06Z LFF 2025209 03.25.12

JEPS Scotchcap 06Z 37

	CED	BW	WW	YW	MA	CEM	SC	ST	DOC	CW	RE	YG	MS	\$MTI
EPD	13	0	61	92	24	9	1.3	13	-4	25	0.23	-0.02	0.5	66.67
%Rank	10	20	45	35	60	10	4	65	>95	45	85	95	5	10

RITO 112 OF 2536 RITO 616
MAGS XUKALANI
 MAGS UKALANI

LESF ASPHALT 9N
EXLR SCOTCH CAP 762T
 EXAR SCOTCH CAP 1548

RITO 616 OF 4B20 6807
 G A R PRECISION 2536
 BASIN FRANCHISE P142
 CARROUSELS PINA COLADA
 GPFF BLAQUE RULON
 GPFF EXTRA SWEET ELITE
 BON VIEW NEW DESIGN 1407
 EXAR SCOTCH CAP 9427

P.E. 12.7.15 to 6.1.16 to TW Fire N' Ice -37% Lim-Flex

-Polled and homozygous black

-Sired by the leading sire at Linhart Limousin, Leon, IA is MAGS Xukalani

-From a daughter of the GPFF Blaque Rulon son LESF Asphalt 9N

-This female ranks in the top 4% of the breed for SC with a 1.30, top 5% of the breed for marbling with a .50 and top 10% of the breed for CED with a 13, CEM with a 9 and SMTI with a 66.67





LOT 38

Lim-Flex (75) Cow DP/DB ELCX 257Z LFF 2013081 03.02.12

ELCX Honey 257Z

38

	CED	BW	WW	YW	MA	CEM	SC	ST	DOC	CW	RE	YG	MS	\$MTI
EPD	8	1	50	76	20	6	0.42	15	8	17	0.62	-0.33	0.02	48.5
%Rank	35	35	85	70	85	45	75	50	85	70	25	25	30	35

GPFF BLAQUE RULON
CARROUSELS PITCH BLAQUE
 SFKL POLLED PRECEDENT

MAGS RUSHMORE
MAGS TALCUM POWDER
 MAGS ROCK POWDER

BLACK DIAMOND
 QUAIL RUN RAMONA BP
 WULFS RAMBLER 8400X
 SFKL POLLED PARADIGM 448D
 GPFF BLAQUE RULON
 TWIN EAGLES JESTRESS 150K
 EXAR NEW DESIGN 2997
 MAGS MESSY POWDER 263M

P.E. 12.7.15 to 6.1.16 to TW Fire N' Ice

75% Lim-Flex, double polled and double black

This 75% Lim-Flex heifer is sired by the son of GPFF Blaques Rulon, Carrouseles Pitch Blaques and from a daughter of MAGS Rushmore back to a daughter of EXAR New Design 2997

This female sells bred carrying the service to the big numbered Lim-Flex sire and once reserve national champion Lim-Flex bull TW Fire N' Ice



LOT 39

Lim-Flex (37) Cow HP/Black MAGS 9613U LFF 1925638 09.03.08

MAGS Unconditional

39

	CED	BW	WW	YW	MA	CEM	SC	ST	DOC	CW	RE	YG	MS	\$MTI
EPD	8	1.8	64	99	35	6	1.3	17	14	32	0.06	0.05	1.07	87.7
%Rank	35	50	35	25	5	45	4	35	65	25	>95	>95	1	1

B/R NEW DESIGN 036
G A R PREDESTINED
 G A R EXT 4206

WULFS FANFARE 4055F
EXLR 199H
 EXLR 558F

V D A R NEW TREND 315
 B/R BLACKCAP EMPRESS 76
 N BAR EMULATION EXT
 G A R 6807 TRAVELER 1432
 TOMAHAWKS BLACK FRONTIER
 WULFS DELTA DAWN 4055D
 WULFS CHANCELLOR 0210C
 PINE DRIVE DUCHESS 1381

P.E. 12.1.15 to 6.1.16 to WLR Game of Thrones

37% Lim-Flex, homozygous polled and double black

A breed leader for marbling with a 1.07

Black and homozygous polled - This brood cow represents a great pedigree and one that has proven its worth in the Limousin breed. She is sired by GAR Predestined and from the \$50,000 valued donor EXLR 199H - This female is a maternal sibling to such breed greats as MAGS Undoing, MAGS Teddie and EXLR Excellent 251L - She scanned a 6.02 for IMF and 11.3 for REA - We love her EPD's of 1.8 for birth, 35 for milk, 1.07 for marbling and 87.70 for MTI

Lim-Flex (50) Cow HP/Black ELCX 228R LFF 1828599 08.12.05

ELCX Luvly 228R 40

	CED	BW	WW	YW	MA	CEM	SC	ST	DOC	CW	RE	YG	MS	SMTI
EPD	11	0.8	56	91	15	8	0.5	15	-4	26	0.6	-0.02	0.48	66.14
%Rank	15	30	65	40	>95	20	65	50	>95	40	25	60	10	10

TWIN VALLEY PRECISIONE161 GAR PRECISION 1680
BR MIDLAND WCC BLACKCAP C9
 BR ROYAL LASS 7036-19 S A F NEUTRON
 S A F ROYAL LASS 7036
 WULFS DAWSON 4421D LKCC TOMAHAWKS TOUCHDOWN
EXLR LUVLY 084F MISS WOLFETTE 4221S
 AMBL LUVLY 340Y TEXS RANGER TED
 TEXS STAR LUV

P.E. 2.1.16 to 3.19.16 to MAGS Xyloid 3712X; P.E. 3.20.16 to 8.3.16 to WLR Reload

50% Lim-Flex, black and homozygous polled

This female represents a proven and very predictable pedigree

Sired by the leading purebred Angus sire BR Midland and she is from the all time breed popular producer EXLR Luvly 084F. 084F was the leading Limousin female for Express Ranches for many years and has left behind females such as this one that have been such solid producers



LOT 40

Spring Cow/Calf Pairs

Lim-Flex (25) Cow HP/DB ELCX 111B LFF 2104568 10.02.14

ELCX Black Betty 111B 41

	CED	BW	WW	YW	MA	CEM	SC	ST	DOC	CW	RE	YG	MS	SMTI
EPD	14	-0.7	61	100	23	11	0.98	-	-	28	0.01	0.1	0.64	71.04
%Rank	4	15	60	35	75	1	35	-	-	45	>95	>95	2	3

MAGS WINSTON BT CROSSOVER 758N
ELCX POSTMASTER 208Y MAGS STRAWBERRY
 SSTO SADIE 6854S JCL LODESTAR 27L
 THOMAS LUCY ROSE 9509
 MYTTY IN FOCUS S A F FOCUS OF E R
PCF EVA 111 OF IN FOCUS MYTTY COUNTESS 906
 P C F EVA WOODHILL 410 WOODHILL ADVANCE
 THREE TREES EVA 2752

P.E. 5.4.16 to 8.10.16 to MAGS Xyloid 3712X

25% Lim-Flex, homozygous polled and double black

Ranks in the top 1% of the breed for CEM with an 11, top 2% for marbling with a .64, top 3% for SMTI with a 71.04 and top 4% for CED with a 14

She is a big numbered daughter of ELCX Postmaster 208Y, a big numbered son of MAGS Winston from SSTO Sadie 6854S

Her calf sells split off and is sired by the national reserve champion Lim-Flex sire TW Fire N' Ice



LOT 41

Lim-Flex (50) Cow HP/DB ELCX 111D LFF 2105328 04.04.16

ELCX Dawn 111D 41A

	CED	BW	WW	YW	MA	CEM	SC	ST	DOC	CW	RE	YG	MS	SMTI
EPD	11	0.7	68	107	26	10	0.89	14	22	34	0.3	0.04	0.34	62.69
%Rank	20	35	30	20	45	4	45	70	40	25	80	95	15	15

TW FIRE N' ICE
ELCX BLACK BETTY 111B BOHI TITLELIST 7050T
 MAGS UPPER SAUNTER
 ELCX POSTMASTER 208Y
 PCF EVA 111 OF IN FOCUS



LOT 41A



LOT 42

Lim-Flex (62) Cow HP/HB ELCX 341A LFF 2051933 10.01.13

ELCX Alexa 341A

42

	CED	BW	WW	YW	MA	CEM	SC	ST	DOC	CW	RE	YG	MS	SMTI
EPD	8	2.6	59	90	19	6	0.72	10	14	27	0.42	-0.15	0.24	57.83
%Rank	45	75	70	60	95	50	55	95	75	50	60	65	20	25

DHVO DEUCE 132R
MAGS XYLOID
BOHI RHONDA 314R

BR MIDLAND
AUTO SHERRI 227S
SLF JEZABEL

GPFF BLAQUE RULON
AMY JO DHAN 20L
EXLR NEW GENERATION 071M
DAVIS ROSETTA 9514
TWIN VALLEY PRECISIONE161
BR ROYAL LASS 7036-19
SOGF SPECIAL K 247B
DVFC ROYAL DREAM 1105D

Lim-Flex (61) Bull DP/HB ELCX 341D LFM 2104421 02.05.16

ELCX Double Up 341 D

42A

	CED	BW	WW	YW	MA	CEM	SC	ST	DOC	CW	RE	YG	MS	SMTI
EPD	6	3.5	64	98	23	6	0.76	10	15	34	0.41	-0.1	0.26	59.65
%Rank	65	90	45	40	75	50	55	95	70	25	60	75	20	20

PBRS ADD IT UP 3120A

ELCX ALEXA 341A

PBRS MILESTONE 137Y
PBRS Y NOT ME 165Y
MAGS XYLOID
AUTO SHERRI 227S

P.E. 5.30.16 to 8.3.16 to ELCX Bacardi 427B

62% Lim-Flex, homozygous polled and homozygous black

This daughter of MAGS Xyloid has a desirable conformation and structure

MAGS Xyloid is a past All American Futurity supreme champion bull and leading sire for the ELCX program

Her dam is AUTO Sherri 227S a proven daughter of BR Midland from the fullblood female SLF Jezebel

LOT 42A - BW: 75 lbs.



LOT 42A

Lim-Flex (25) Cow HP/DB BMAS 3007A LFF 2037264 02.15.13

SPRING CRKS Smoky 3007A

43

	CED	BW	WW	YW	MA	CEM	SC	ST	DOC	CW	RE	YG	MS	SMTI
EPD	13	0.8	81	126	18	7	1.2	10	19	46	0.75	-0.04	0.39	69.12
%Rank	10	35	4	3	>95	35	15	95	55	4	10	85	10	5

O C C EMBLAZON 854E
RITO 6EM3 OF 4LI EMBLAZON
RITA 4L1 OF 2536 208

SPRING WULF CREEK 8358W
SPRNG CRKS SMOKEY 1067Y
AUTO SMOKEY 806T

D H D TRAVELER 6807
DIXIE ERICA OF C H 1019
BON VIEW DESIGN 208
G A R PRECISION 2536
MCC NEW DAWN 4023
CARROUSELS MARTHA 2233M
AUTO DIESEL POWER 953R
EXAR EMPRESS 3185

P.E. 5.13.16 to 8.3.16 to WLR Reload

25% Lim-Flex, homozygous polled and double black

Spring Crks Smokey 3007A ranks in the top 3% of the breed for YW with a 126, top 4% of the breed for WW with an 81, CW with a 46 and top 5% for SMTI with a 69.12

Sired by the purebred Angus sire Rito 6EM3 of 4LI Emblazon and from a Spring Creek bred female on the bottom side

She sells bred to WLR Reload, the 2013 All American Futurity Grand Champion bull for Wies and Edwards Land & Cattle Co.

Lim-Flex (50) Cow DP/DB ELCX 300D LFF 2104519 04.07.16

ELCX Ditto 300 D

43A

	CED	BW	WW	YW	MA	CEM	SC	ST	DOC	CW	RE	YG	MS	SMTI
EPD	10	3.8	70	109	14	7	0.95	9	24	37	0.4	0	0.27	61.05
%Rank	25	95	25	20	>95	35	335	>95	30	15	65	90	20	15

MAGS XYLOID

SPRING CRKS SMOKEY 3007A

DHVO DEUCE 132R
BOHI RHONDA 314R
RITO 6EM3 OF 4LI EMBLAZON
SPRNG CRKS SMOKEY 1067Y

Lim-Flex (75) Cow HP/Black JJKH 644A LFF 2057870 12.07.13

RVF Riverwind 644A 44

	CED	BW	WW	YW	MA	CEM	SC	ST	DOC	CW	RE	YG	MS	\$MTI
EPD	4	3	64	97	30	9	0.65	19	13	32	0.34	-0.07	0.12	54.37
%Rank	90	85	45	40	15	10	65	20	80	30	75	80	30	30

JCL LODESTAR 27L
LH RODEMASTER 338R
 VERMILION E BLACKBIRD9546
 AUTO AMERICAN IDOL 162L
AUTO RIGHT WAY 272R
 AUTO BARBARA ANN 277H
 HUNTS HI-LITER 245G
 LOGAN'S CHEERLEADER 280G
 VERMILION 31 STACLER 3491
 CH ENV BLACKBIRD C5941
 AUTO ROUGH IDLE 141J
 WULFS DELIGHT 4114D
 WULF'S COUNT DOWN 9251C
 AMBL LUVLY 340Y

Lim-Flex (71) Cow DP/DB ELCX 644D LFF 2105327 04.30.16

ELCX Delta 644 D 44A

	CED	BW	WW	YW	MA	CEM	SC	ST	DOC	CW	RE	YG	MS	\$MTI
EPD	9	0.8	67	101	28	10	0.8	18	18	31	0.22	-0.04	0.19	57.49
%Rank	35	35	35	35	30	4	45	25	55	35	90	85	25	25

ELCX CRUZE CONTROL 329A
RVF RIVERWIND 644A
 AUTO CRUZE 132X
 SBLX UNKNOWN 104U
 LH RODEMASTER 338R
 AUTO RIGHT WAY 272R

Lim-Flex (62) Cow HDP/HB ELCX 572B LFF 2081071 03.19.14

ELCX Bea 572 B 46

	CED	BW	WW	YW	MA	CEM	SC	ST	DOC	CW	RE	YG	MS	\$MTI
EPD	7	2.9	61	96	17	7	0.85	10	20	32	0.26	-0.04	0.28	59.12
%Rank	55	80	60	45	>95	35	45	95	50	30	85	85	15	20

DHVO DEUCE 132R
MAGS XYLOID
 BOHI RHONDA 314R
 S A V NET WORTH 4200
RVF ZOLOFT 572Z
 YOUNG 'N RESTLESS 495W
 GPFF BLAQUE RULON
 AMY JO DHAN 20L
 EXLR NEW GENERATION 071M
 DAVIS ROSETTA 9514
 S A V 8180 TRAVELER 004
 S A V MAY 2410
 HMMP PLD SARGE 658S
 JJKH NEW IDOL 226N

Lim-Flex (31) Cow DP/DB ELCX 572D LFM 2104569 03.29.16

ELCX Duck Call 572 C 46A

	CED	BW	WW	YW	MA	CEM	SC	ST	DOC	CW	RE	YG	MS	\$MTI
EPD	12	0.9	63	98	24	9	0.99	-	15	35	0.42	0.04	1.18	91.61
%Rank	15	40	50	40	65	10	35	-	70	20	60	95	1	1

WOODSIDE RITO 4050 OF 0M3
ELCX BEA 572 B
 G A R PROPHET
 RITA OF RITA 5F56 PRED
 MAGS XYLOID
 RVF ZOLOFT 572Z

P.E. 5.30.16 to 8.3.16 to WLR Reload

75% Lim-Flex, black and homozygous polled

Sired by the now deceased LH Rodemaster 338R from a daughter of AUTO American Idol 162L back to the AUTO Barbara Ann 277H donor

This female is a solid producer and represents a very predictable and proven pedigree

Her calf will sell split off and is sired by the AUTO Cruze son, ELCX Cruze Control 329A

P.E. 5.13.16 to 8.3.16 to WLR Reload

Sired by the All-American Futurity supreme champion bull MAGS Xyloid and from a proven daughter of SAV Net Worth

LOT 46A Here is a son of one of the biggest numbers purebred Angus bulls in the entire bree. He offers a 99 for yearling weight, 30 for milking ability, 2.07 for marbling, SB of 123.78 and REA of .59.

We admire and appreciate this young Angus bull for his extreme number package along with his unique profile and desirable look. He fits into Edwards Land & Cattle Co. with developing and creating more big numbered purebred Angus and also the creation of powerful Lim-Flex cattle as found with this young bull calf.

Lim-Flex (50) Cow DP/DB ELCX 385B LFF 2105330 03.05.14

ELCX Beatty 385 B 45

	CED	BW	WW	YW	MA	CEM	SC	ST	DOC	CW	RE	YG	MS	\$MTI
EPD	9	1	56	89	28	4	0.93	12	15	25	0.45	-0.19	0.63	71.46
%Rank	35	40	80	60	30	80	35	85	70	55	55	50	2	3

S S OBJECTIVE T510 0T26
RITO 7065 OF RITA 5M46 OB
 RITA 5M46 OF 2536 PRED
 S S TRAVELER 6807 T510
 S S MISS RITA R011 7R8
 G A R PREDESTINED
 G A R PRECISION 2536
 SENNETT LODESTAR 502R
DPBN OH SOO GOOD 385T
 WIN VUE KEY NICOLE 385N
 SS TRAVELER 6807 T510
 S S MISS RITA R011 7R8
 G A R PREDESTINED
 G A R PRECISION 2536
 JCL LODESTAR 27L
 DVFC COOKIES CHOICE 215H
 WULFS KEYNOTE 5474K
 WIN VUE POLLED INTRIGUE

Lim-Flex (55) Cow DP/DB ELCX 385D LFF 2105332 04.22.16

ELCX Dream Big 385 D 45A

	CED	BW	WW	YW	MA	CEM	SC	ST	DOC	CW	RE	YG	MS	\$MTI
EPD	7	3.5	63	98	28	5	0.86	11	15	33	0.42	-0.12	0.45	66.44
%Rank	55	90	50	40	30	65	45	90	70	30	60	70	10	10

PBRs ADD IT UP 3120A
ELCX BEATTY 385 B
 PBRs MILESTONE 137Y
 PBRs Y NOT ME 165Y
 RITO 7065 OF RITA 5M46 OB
 DPBN OH SOO GOOD 385T

Lim-Flex (75) Cow DP/DB ELCX 439Z LFF 2105331 04.18.12

ELCX Zoey 439 Z 47

	CED	BW	WW	YW	MA	CEM	SC	ST	DOC	CW	RE	YG	MS	\$MTI
EPD	5	2	60	92	20	6	-	-	-	27	0.44	-0.11	-0.1	45.46
%Rank	80	65	65	55	95	50	-	-	-	50	55	75	55	65

WULFS TITUS 2149T
MAGS LANDMARK
 MAGS SHARI
 JCL LODESTAR 27L
PBRs 439W
 SEDGWICKS PRIDE 7984
 WULFS REALTOR 1503R
 WULFS MEADOW GRASS 2149M
 GPFF BLAQUE RULON
 MAGS MANDA
 HUNTS HI-LITER 245G
 LOGAN'S CHEERLEADER 280G
 MC CUMBER 204 MR WIX 920
 SEDGWICKS PRIDE 7987

Lim-Flex (75) Cow DP/Red ELCX 439D LFF 2105333 04.18.16

ELCX Dee Dee 439 D 47A

	CED	BW	WW	YW	MA	CEM	SC	ST	DOC	CW	RE	YG	MS	\$MTI
EPD	6	2.3	68	102	25	7	0.7	14	16	33	0.52	-0.07	-0.03	50.04
%Rank	65	70	30	30	55	35	55	70	65	30	40	80	45	45

TW FIRE N' ICE
ELCX ZOHEY 439 Z
 BOHI TITLELIST 7050T
 MAGS UPPER SAUNTER
 MAGS LANDMARK
 PBRs 439W

P.E. 5.4.16 to 8.10.16 to MAGS Xyloid 3712X

50% Lim-Flex, double polled and double black

ELCX Beatty 385B ranks in the top 2% of the breed for marbling with a .63 and top 3% for SMTI with a 71.46

Sired by the purebred Angus sire Rito 7065 of Tia 5M46 OB and from a daughter of Sennett Lodestar 27L

This female hold her condition very well and seems to always put her energy into her calf

P.E. 6.2.16 to 8.10.16 to AUTO Will Power 160X

75% Lim-Flex, double polled and double black

Sired by MAGS Landmark and from a daughter of JCL Lodestar 27L

This 75 Lim-Flex female is well made, well balanced and has a predictable pedigree, top performance and excellent structure



ELCX Postmaster 208Y, service sire of Lot 48.

Lim-Flex (50) Cow HP/HB ELCX 307Z LFF 2031147 11.06.12

ELCX Charmaigne 307Z 48

	CED	BW	WW	YW	MA	CEM	SC	ST	DOC	CW	RE	YG	MS	SMTI
EPD	7	0.2	63	95	21	8	0.85	18	8	27	0.65	-0.28	0.55	71.36
%Rank	55	25	50	45	85	20	45	25	95	50	20	25	3	3

HUNT CORNHUSKER 225N HUNT MR JOCK 44J
MAGS WILD BUNCH HUNT KANDACE 19K
 MAGS RAPHAELA SUMMITCRESTHIGHPRIME 0H29
 MAGS LADY ACE
 BON VIEW NEW DESIGN 1407 B/R NEW DESIGN 036
EXLR BARB 170R BON VIEW PRIDE 664
 EXLR BARB 1027M EXLR BROADWAY 041E
 C & C BARB

Lim-Flex (55) Cow DP/HB ELCX 307D LFF 2104521 05.15.16

ELCX Dillard's 307 D 48A

	CED	BW	WW	YW	MA	CEM	SC	ST	DOC	CW	RE	YG	MS	SMTI
EPD	6	1.6	66	101	24	7	0.82	14	12	34	0.52	-0.16	0.41	66.18
%Rank	65	55	40	35	65	35	45	70	85	25	40	60	10	10

PBRs ADD IT UP 3120A PBRs MILESTONE 137Y
 PBRs Y NOT ME 165Y
ELCX CHARMAIGNE 307Z MAGS WILD BUNCH
 EXLR BARB 170R

P.E. dates to ELCX Postmaster 208Y

Here is a daughter of EXLR Barb 170R is a prominent donor that has proven her worth with her progeny and she still has so much more to create. This 25% Lim-Flex donor is homozygous polled, homozygous black and represents a powerful heritage. She is sired by the leading Angus sire Bon View New Design 1407 and from a daughter of ELXR Broadway 041E. She scanned a 11.7 for REA and 4.59 for IMF.

ELCX Charmaigne 307Z is absolutely remarkable in her design and conformation. She is so long bodied, level out of her rump and very sound in her structure.

She ranks in the top 3% of the breed for marbling with a .55 and SMTI with a 71.36

PB Limousin (100) Cow DP/DB MCBN 118Y NPF 1998630 03.20.11

MCBN Yihana 118Y 49

	CED	BW	WW	YW	MA	CEM	SC	ST	DOC	CW	RE	YG	MS	SMTI
EPD	6	1.9	59	81	32	5	0.82	16	0	21	-0.04	0.07	0.2	54.29
%Rank	60	55	50	60	15	55	30	40	>95	55	>95	>95	20	25

GPFF BLAQUE RULON BLACK DIAMOND
MAGS SAVAGE QUAIL RUN RAMONA BP
 MAGS MANDA EXLR DAKOTA 353G
 JCL LODESTAR 27L MAGS JEWEL
MAGS SQUIGGLES HUNTS HI-LITER 245G
 MAGS TRIXIE 455M LOGAN'S CHEERLEADER 280G
 MAGS JUMANJI
 CANE RIDGE TRIXIE 882C

P.E. 12.7.15 to 6.1.16 to TW Fire N' Ice

Purebred, double polled and double black

Sired by the once highly syndicated sire MAGS Savage and from a daughter of JCL Lodestar 27L

She ranks in the top 15% of the breed for milk with a 35

We admire the heaviness of bone and foot size found in this female and her unique profile

PB Limousin (81%) Cow DP/DB ELCX 118D -- 03.08.16

ELCX 118D 49A

	CED	BW	WW	YW	MA	CEM	SC	ST	DOC	CW	RE	YG	MS	SMTI
EPD	7	2.1	65	93	24	6	0.84	13	6	29	0.34	-0.08	0.14	55.05

WLR GAME OF THRONES MAGS WIGGLER
 MCBN YIHANA 118Y WLR URSULA 499U
 MAGS SAVAGE
 MAGS SQUIGGLES

Lim-Flex (43) Cow DP/DB ELCX 67A LFF 2045287 10.22.13

ELCX Amazing 67 A 50

	CED	BW	WW	YW	MA	CEM	SC	ST	DOC	CW	RE	YG	MS	SMTI
EPD	12	-0.4	67	108	29	9	0.74	12	9	34	0.36	-0.06	0.56	71.16
%Rank	15	15	35	20	20	10	55	85	90	25	70	85	3	3

G A R PREDESTINED B/R NEW DESIGN 036
AUTO WILL POWER 160X G A R EXT 4206
 AUTO REBECA 292S LESF ASPHALT 9N
 EXLR REBECA 1019P
 BT CROSSOVER 758N
ELCX YES 67 Y MAGS STRAWBERRY
 ELCX 67 W CRSL 5064R
 AA 5295 IDEAL 164 FCA

P.E. 5.4.16 to 8.10.16 to MAGS Xyloid 3712X

43% Lim-Flex, double polled and double black

ELCX Amazing 67A ranks in the top 3% of the breed for marbling with a .56 and SMTI with a 71.16, top 10% for CEM with a 9 and top 15% on CED with a 12, BW with a -0.4

This big numbered female is sired by AUTO Will Power 160X, the \$30,000 half interest valued son of GAR Predestined from the famed donor AUTO Rebeca 292S

Her dam is a daughter of the now deceased MAGS Winston

Lim-Flex (43) Bull DP/DB ELCX 167D -- 05.18.16

ELCX 167D 50A

	CED	BW	WW	YW	MA	CEM	SC	ST	DOC	CW	RE	YG	MS	SMTI
EPD	12	-0.4	67	108	29	9	0.74	12	9	34	0.36	-0.06	0.56	71.16

AUTO WILL POWER 160X G A R PREDESTINED
 AUTO REBECA 292S
ELCX AMAZIN 67 A AUTO WILL PWOER 160X
 ELCX YES 67 Y

LOT 50A

BW: 62 lbs.

Lim-Flex (75) Cow HP/HB CFLX 959W LFF 1962427 12.18.19

CFLX Rejoice 959W **51**

	CED	BW	WW	YW	MA	CEM	SC	ST	DOC	CW	RE	YG	MS	\$MTI
EPD	4	3.8	69	102	21	6	0.55	14	2	36	0.36	-0.1	-0.02	50.89
%Rank	80	90	20	20	80	45	65	55	>95	15	65	80	30	30

BR MIDLAND
MAGS SCOTLAND
 MAGS MARQUEE

GPF BLAQUE RULON
BOHI REJOICE 308R
 AUTO ELITE 270F

TWIN VALLEY PRECISIONE161
 BR ROYAL LASS 7036-19
 EXLR DAKOTA 353G
 MAGS JEWEL
 BLACK DIAMOND
 QUAIL RUN RAMONA BP
 JCL BLACK OUT
 STBR GRACIOUS GIRL

Lim-Flex (68) Cow HP/GB ELCX 159D LFF 2104520 04.20.16

ELCX Doughnut 159D **51A**

	CED	BW	WW	YW	MA	CEM	SC	ST	DOC	CW	RE	YG	MS	\$MTI
EPD	5	3.3	69	103	18	6	0.7	12	7	36	0.54	-0.17	0.03	53.33
%Rank	80	90	30	30	>95	50	55	85	95	20	40	60	40	35

WLR GAME OF THRONES

CFLX REJOICE 959W

MAGS WIGGLER
 WLR URSULA 499U
 MAGS SCOTLAND
 BOHI REJOICE 308R

% Limousin (81) Cow HP/Black ELCX 148Y NXF 1989601 03.22.11

ELCX Pepper Spray 148Y **52**

	CED	BW	WW	YW	MA	CEM	SC	ST	DOC	CW	RE	YG	MS	\$MTI
EPD	7	1.9	55	85	35	4	0.78	15	16	23	-0.1	-0.03	0.02	47.72
%Rank	55	60	80	70	3	80	55	60	65	65	>95	90	40	55

AUTO BLACK DAKOTA 129J
EXLR REVIEW 7153R
 EXLR 199H

JCL LODESTAR 27L
DFLC HBHPC 12R
 DFLC HBPC 25L

EXLR DAKOTA 353G
 DFLC JET SET BPC 34Y
 WULFS FANFARE 4055F
 EXLR 558F
 HUNTS HI-LITER 245G
 LOGAN'S CHEERLEADER 280G
 DFLC DOUBLE SHOT BPB 41E
 DALTONS EDITH ERICA 250

Lim-Flex (59) Cow HP/DB ELCX 348D LFF 2104423 02.06.16

ELCX Dipped IN Chocolate **52A**

	CED	BW	WW	YW	MA	CEM	SC	ST	DOC	CW	RE	YG	MS	\$MTI
EPD	8	0.2	58	92	31	5	0.99	15	10	27	0.2	-0.09	0.31	59.63
%Rank	45	25	70	55	15	65	35	60	90	50	90	75	15	20

AUTO WILL POWER 160X

ELCX PEPPER SPRAY 148Y

G A R PREDESTINED
 AUTO REBECA 292S
 EXLR REVIEW 7153R
 DFLC HBHPC 12R

75% Lim-Flex, homozygous polled and homozygous black

Here is a daughter of BOHI Rejoice 308R, the dam the 2011 National Champion Purebred Limousin female, MAGS Wrigley which topped the 2010 Magness Land & Cattle Co. sale at \$48,000 and was successfully shown by the Etherton Family in Dawson, IL to not only win Denver but was also named the National Gold Medal Female of the year

BOHI Rejoice is the leading Stowers Limousin donor that is owned with our friends at Counsil Family Limousin



LOT 51

Lim-Flex (75) Cow HP/GB CFLX 063U LFF 1930553 09.01.08

CFLX Black Lucky 063U **53**

	CED	BW	WW	YW	MA	CEM	SC	ST	DOC	CW	RE	YG	MS	\$MTI
EPD	5	1.1	64	92	19	4	1.1	12	17	26	0.29	-0.08	-0.2	42.66
%Rank	70	35	35	35	90	70	10	75	50	40	75	85	50	55

GPF BLAQUE RULON
DHVO DEUCE 132R
 AMY JO DHAN 20L

AUTO BLACK DAKOTA 129J
VVLC BLACK LUCY 416R
 WHITESTONE LUCY L128

BLACK DIAMOND
 QUAIL RUN RAMONA BP
 BLACK CAT DHAN 152G
 GPF AMBER JO
 EXLR DAKOTA 353G
 DFLC JET SET BPC 34Y
 V D A R LUCYS BOY
 WHITESTONE LUCY J249

Lim-Flex (68) Bull HP/HB ELCX 036D LFM 2104522 05.18.16

ELCX Down South 036D **53A**

	CED	BW	WW	YW	MA	CEM	SC	ST	DOC	CW	RE	YG	MS	\$MTI
EPD	6	2.2	67	98	17	5	0.97	11	14	31	0.51	-0.15	-0.06	49.25
%Rank	65	70	35	40	>95	65	35	90	75	35	45	65	50	50

WLR GAME OF THRONES

CFLX BLACK LUCY 063U

MAGS WIGGLER
 WLR URSULA 499U
 DHVO DEUCE 132R
 VVLC BLACK LUCY 416R

P.E. 6.2.16 to 8.10.16 to AUTO Will Power 160X

75% Lim-Flex, homozygous polled and homozygous black

A daughter of the national champion sire DHVO Deuce 132R and from a very strong and powerful donor VVLC Black Lucy 416R, a daughter of the two time national M.O.E. sire AUTO Black Dakota from the purebred Angus female Whitestone Lucy L128



TW Fire N' Ice, sire of Lot 54A.

PB Limousin (100) Cow DP/DB DPBN 6W NPF 1951178 10.05.09

DPBN Star 6W **54**

	CED	BW	WW	YW	MA	CEM	SC	ST	DOC	CW	RE	YG	MS	SMTI
EPD	7	2	68	100	26	4	0.6	22	15	32	0.33	-0.13	-0.15	46.16
%Rank	45	55	20	25	45	70	50	10	60	25	70	75	45	40

HUNTS HI-LITER 245G WADDLES COBALT 3106
JCL LODESTAR 27L TNUH MISS C245
 LOGAN'S CHEERLEADER 280G COLE FIRST DOWN 46D
 TTCC CONFIDENCE MAKER
 GPF BLAQUE RULON BLACK DIAMOND
DFLC BPC 6R QUAIL RUN RAMONA BP
 GPF BLACK POLLED KAYE SOGF SPECIAL K 247B
 GPF SIREN

PB Limousin (87) Bull DP/DB ELCX 47D NPM 2104525 04.26.16

ELCX Dollar Tree 47 D **54A**

	CED	BW	WW	YW	MA	CEM	SC	ST	DOC	CW	RE	YG	MS	SMTI
EPD	8	2.6	72	106	28	6	0.7	19	21	36	0.47	-0.08	-0.05	50.56
%Rank	45	75	20	25	30	50	55	20	45	20	50	80	50	45

TW FIRE N' ICE BOHI TITLELIST 7050T
 MAGS UPPER SAUNTER
DPBN STAR 6W JCL LODESTAR 27L
 DFLC BPC 6R

P.E. 6.2.16 to 8.10.16 to AUTO Will Power 160X

Purebred, double polled and double black

Sired by the multiple trait leading sire JCL Lodestar 27L. Lodestar 27L has made his mark in the business as a top maternal and marbling sire that has left in the breed an amazing set of females just like this one

She is from a daughter of GPF Blaque Rulon, the purebred bull that is recognized as one of the finest in the business



LOT 55

Lim-Flex (62) Cow DP/DB ELCX 507A LFF 2032290 02.03.13

ELCX Angel 507 A **55**

	CED	BW	WW	YW	MA	CEM	SC	ST	DOC	CW	RE	YG	MS	SMTI
EPD	9	1.8	60	92	18	8	1.2	15	27	28	0.04	0.02	0.43	63.63
%Rank	30	50	50	35	95	20	10	50	15	35	-95	95	10	10

DHVO DEUCE 132R GPF BLAQUE RULON
MAGS XYLOID AMY JO DHAN 20L
 BOHI RHONDA 314R EXLR NEW GENERATION 071M
 DAVIS ROSETTA 9514
 MYTTY IN FOCUS S A F FOCUS OF E R
MAGS TAPESTRY MYTTY COUNTESS 906
 MAGS GRETCHEN 143L EXLR DAKOTA 353G
 MAGS GRETCHEN

A.I. 5.26.16 to HBRL Genesis 404B; P.E. 5.30.16 to 8.10.16 to ELCX Bench-warmer 363B

62% Lim-Flex, doubled polled and homozygous black

Her dam MAGS Tapestry ranks in the top 1% of the Lim-Flex population for marbling and SMTI, both traits can have a significant impact on the financial success of operations ranging from the seedstock segment to the packing industry.

Maternal sister to past Denver reserve champion and Massey/Cole Kaufman donor, MAGS Wallpaper out of the famous MAGS Gretchen donor

ELCX Angel 507A ranks in the top 10% of the breed for SC with a 1.20, MB with a .43 and SMTI with a 63.63

Lim-Flex (50) Bull DP/DB ELCX 507D LFM 2104426 03.28.16

ELCX Dynamite 507 D **55A**

	CED	BW	WW	YW	MA	CEM	SC	ST	DOC	CW	RE	YG	MS	SMTI
EPD	9	1.0	60	96	23	8	1.20	16	16	29	0.27	-0.06	0.52	67.64
%Rank	35	40	65	45	75	20	15	45	65	40	85	85	4	10

AUTO WILL POWER 160X G A R PREDESTINED
 AUTO REBECA 292S
ELCX ANGEL 507 A MAGS XYLOID
 MAGS TAPSTRY

Lim-Flex (37) Cow DP/DB ELCX 12B LFF 2057913 04.20.14

ELCX BAMBI 12B 56

	CED	BW	WW	YW	MA	CEM	SC	ST	DOC	CW	RE	YG	MS	\$MTI
EPD	10	0.7	58	97	19	7	0.94	10	22	30	0.24	-0.02	0.46	64.63
%Rank	25	35	70	40	95	35	35	95	40	40	90	10	10	10

DHVO DEUCE 132R
MAGS XYLOID
 BOHI RHONDA 314R

WOODHILL FORESIGHT
BACK CREEK EVERDA X12
 THREE TREES EVERELDA 3233

GPFF BLAQUE RULONG
 AMY JO DHAN 20L
 EXLR NEW GENERATION 071M
 DAVIS ROSETTA 9514
 PAPA FORTE 1921
 BON VIEW GAMMER 85
 BON VIEW NEW DESIGN 1407
 SHADY BROOK ENTENSE 76D 2

A.I. 5.27.16 to Sure Deal; P.E. 5.30.16 to 8.10.16 to ELCX Benchwarmer 363B

43% Lim-Flex, double polled and double black

This MAGS Teddie daughter is clean and feminine up through her head and and very straight in her lines

We admire her design and angularity

She ranks in the top 4% of the breed for MB with a .53, top 5% for \$MTI with a 68.87 and top 15% for MK with a 30

Lim-Flex (43) Bull DP/DB ELCX 12D LFM 2104567 03.01.16

ELCX Down River 12 D 56A

	CED	BW	WW	YW	MA	CEM	SC	ST	DOC	CW	RE	YG	MS	\$MTI
EPD	10	0.2	68	106	20	8	0.87	-	17	34	0.51	-0.04	0.41	66.10
%Rank	25	25	30	25	95	20	45	-	60	25	45	85	10	10

CL BURBANK
ELCX BAMBI 12B

MAGS REJUVENATOR
 LH RADIANT 323R
 MAGS XYLOID
 BACK CREEK EVERDA X12

Lim-Flex (75) Cow HP/HB ELCX 06Z LFF 2074239 12.28.12

ELCX Zip 06Z ET 57

	CED	BW	WW	YW	MA	CEM	SC	ST	DOC	CW	RE	YG	MS	\$MTI
EPD	10	1.8	75	106	19	7	0.6	-	21	35	0.79	-0.2	-0.08	51.29
%Rank	25	60	15	25	95	35	65	-	45	20	10	50	50	40

MAGS REJUVENATOR
C L BURBANK
 LH RADIANT 323R

WULFS GUARDIAN 5074G
WULFS PLUMBERRY 4035P
 CARROUSELS MARCY 2032M

GPFF BLAQUE RULON
 TWIN EAGLES LADY 180K
 JCL LODESTAR 27L
 VERMILION LADY 1469
 WULFS RAMBLER 8400X
 WULFS EXAMPLE 5074E
 LVLS FARMER 4G
 CARROUSELS KYRA

P.E. 5.14.16 to 8.3.16 to RITO 7065 of RITA 5M46 OB

75% Lim-Flex, homozygous polled and homozygous black

Sired by the once national sale top selling bull CL Burbank and from a daughter of Wulf's Guardian

This female is in the prime years of her production and thus far has proven her worth with her past calves at ELCX



LOT 56

Page 33



RITO 7065 of RITA 5M46, service sire to Lot 57.

Congratulations
North Carolina Juniors
on your success with

ELCX GENETICS

Building the Limousin breed
one junior at a time.



ELCX Candy Land 565C ET
Exhibited by Mary Dunn, Mount Olive, NC



ELCX Aaliyah 453A

Exhibited by Jensen Barwick, Seven Springs, NC and
Abigail Graham, Louisvurg, NC for show assistant

2016 Naitonal Limousin Junior Heifer Show Grand Champion Lim-Flex
Cow/Calf & All-American Futurity Grand Champion Cow/Calf



ELCX Charlotte 066C
Exhibited by Victoria Ward, Clayton, NC



ELCX Center Fold 567C
Exhibited by Shane Kendall, Magnolia, NC



ELCX Chat Room 104C
Exhibited by Charity Jordan, Maysville, NC



ELCX Career Day 258C
Exhibited by Daniel Dunn, Mount Olive, NC

CONGRATULATIONS ALSO TO:

ELCX Candy 330 C
AALF Grand Champion Female
Owned with Wies Limousin, Wellsville, MO

ELCX Bullet Proof 438B ET
AALF Grand Champion Female
Owned with Owen Cattle Co., Hornbeak, TN



ELCX Cover Girl 551C ET
Exhibited by Wyatt Kendall, Magnolia, NC



ELCX Classic 906C
Exhibited by Weslyn Pendergraft, Zebulon, NC



ELCX

Bull Lease Program

If purchasing a bull is NOT an option for you at this time then the Edwards Family are offering a bull lease program. The agreement is at the end of the sale, you can pay 25% of your bid purchase price with a (minimum of \$800). This pays for a 90 day lease on the herd bull. After 90 days of using the bull if not returned to the the Edwards operation then you will be charged \$5 per day. If the bull loses more than 200 pounds while in your care, a \$1 per pound for each pound over 200 pounds will be added to your cost. It is the responsibility of the lessee for all transportation/hauling of the bulls.

For further details, please feel free to contact ...

Dexter Edwards.....910.290.0467

Nicholas Edwards910.290.1424

Randy Ratliff.....615.330.2735





Morris

LOT 58

Herd Sire Prospects

Lim-Flex (56) Bull HP / HB MAGS 604C LFM 2069993 03.05.15

MAGS Candidate

58

	CED	BW	WW	YW	MA	CEM	SC	ST	DOC	CW	RE	YG	MS	SMTI
EPD	7	2.6	65	108	24	7	1.1	14	17	39	0.25	0.02	0.58	70.76
%Rank	55	75	45	20	65	35	20	70	60	15	85	95	3	3

MAGS XYLOID
MAGS ZAPPO
 MAGS TIMELESS
 G A R PREDESTINED
MAGS UNLIKELY CANDIDATE
 LOGAN'S CHEERLEADER 280G

DHVO DEUCE 132R
 BOHI RHONDA 314R
 AUTO DOLLAR GENERAL 122R
 TWIN EAGLES PRIDE 405P
 B/R NEW DESIGN 036
 G A R EXT 4206
 COLE FIRST DOWN 46D
 TTCC CONFIDENCE MAKER

BW: 93 lbs.; WW: 590 lbs.; YW: 1,120 lbs.

56% Lim-Flex, homozygous polled and homozygous black

Here is a big league herd sire prospect from a \$44,000 valued purchased from Magness Land & Cattle Co. sale. She is a proven and prominent donor for Edwards Land & Cattle Co.

MAGS Candidate 604C is sired by MAGS Zappo, a son of MAGS Xyloid from the \$50,000 valued donor MAGS Timeless owned by Salt Creek Cattle

We admire his unique profile, extra pounds and muscle and substance of bone and foot

He ranks in the top 3% of the breed for MB with a .58, SMTI with a 70.7, top 15% for CW with a 39, top 20% for SC with a 1.10



Morris

LOT 59

Lim-Flex (62) Bull DP / DB ELCX 271C LFM 2089617 01.02.15

ELCX Cartoon 271C

59

	CED	BW	WW	YW	MA	CEM	SC	ST	DOC	CW	RE	YG	MS	SMTI
EPD	10	1.2	64	96	31	8	0.83	17	17	29	0.32	-0.05	0.14	54.84
%Rank	25	45	45	45	15	20	45	35	60	40	75	85	30	30

BOHI TITELIST 7050T
TW FIRE N' ICE
 MAGS UPPER SAUNTER
 BON VIEW NEW DESIGN 878
RVDR TAMMY 2716T
 EXG PAULINE 428P RVDR

AUTO DOLLAR GENERAL 122R
 CARROUSELS PINA COLADA
 LH RODEMASTER 338R
 MAGS SAUNTER
 B/R NEW DESIGN 036
 BON VIEW GAMMER 85
 DVFC BLACK POWER 342M
 BGRR MS KATIE

BW: 70 lbs.; WW: 610 lbs.; YW: 1,212 lbs.

62% Lim-Flex, double polled and double black

ELCX Cartoon 271C is a powerhouse kind of herd sire and one that any commercial or seedstock operation will appreciate

His dam is the 50% Lim-Flex donor RVDR Tammy 2716T, a daughter sired by Bon View New Design 878 and from a grand daughter of the high marbling sire MAGS Jumanji. This Lim-Flex polled and homozygous black female is strong topped and very appealing in her stance.

RVDR Tammy possesses the same positive traits as many of the breed's Bon View 878 daughters have, she has super maternal value she is extremely sound and is certain easy fleshing. Many Angus breeders have come to rely on 878 as their go to Angus sire who passes on enough real word traits and yet is very marketable and highly recognizable.

PB Limousin (100) Bull DP/DB ELCX 47C NPM 2085985 02.22.15

ELCX Connor 47C 60

	CED	BW	WW	YW	MA	CEM	SC	ST	DOC	CW	RE	YG	MS	\$MTI
EPD	4	3.6	72	106	28	8	0.75	19	17	38	0.25	-0.05	-0.01	51.83
%Rank	90	95	20	25	30	20	55	20	60	15	85	85	45	40

AUTO DOLLAR GENERAL 122R
BOHI TOP DOLLAR 7144T
 CARROUSELS PINA COLADA

JCL LODESTAR 27L
DPBN STAR 6W
 DFCL BPC 6R

LVLS SECRET WEAPON 4408K
 AUTO KYRIA 232K
 AUTO BLACK DAKOTA 129J
 ELMW GINNIE P58G
 HUNTS HI-LITER 245G
 LOGAN'S CHEERLEADER 280G
 GPFF BLAQUE RULON
 GPFF BLACK POLLED KAYE

BW: 80 WW: 642 YW: 1198

- Purebred
- Double polled and double black
- Sired by the big numbered son of AUTO Dollar General 122R and from the national champion female Carrouseles Pina Colada, BOHI Top Dollar 7144T
- His dam is a daughter of the multiple trait leading sire JCL Lodestar 27L
- This beef bull is stout made, heavy in his muscle pattern and ready to get to work



BOHI Top Dollar 7144T, sire of Lot 60.

Lim-Flex (75) Bull HP / HB ELCX 505C LFM 2095837 02.20.15

ELCX Camp Sit 505C ET 61

	CED	BW	WW	YW	MA	CEM	SC	ST	DOC	CW	RE	YG	MS	\$MTI
EPD	11	1.1	62	109	25	8	1.25	24	22	36	0.04	0.06	0.39	62.91
%Rank	20	40	55	20	55	20	15	1	40	20	>95	>95	10	15

HUNTS HI-LITER 245G
JCL LODESTAR 27L
 LOGAN'S CHEERLEADER 280G

MYTTY IN FOCUS
MAGS TAPESTRY
 MAGS GRETCHEN 143L

WADDLES COBALT 3106
 TNUH MISS C245
 COLE FIRST DOWN 46D
 TTCC CONFIDENCE MAKER
 S A F FOCUS OF E R
 MYTTY COUNTESS 906
 EXLR DAKOTA 353G
 MAGS GRETCHEN

BW: 80 lbs.; WW: 660 lbs.; YW: 1,090 lbs.
 75% Lim-Flex, homozygous polled and homozygous black

Here are three full brothers that represent an amazing mating from the heart of the ELCX embryo transplant program
 There dam MAGS Tapestry is a truly a female that could have as much impact on this breed as any female that has come before her.
 This female has an exceptional flush record, is homozygous black and is a direct daughter of one of the most dominant sires in recent Angus history, MYTTY In Focus.
 From an analytical perspective, MAGS Tapestry ranks in the top 1% of the Lim-Flex population for marbling and \$MTI, both traits can have a significant impact on the financial success of operations ranging from the seedstock segment to the packing industry.
 Maternal sister to these three bulls was a past Denver reserve champion and Massey/Cole Kaufman donor, MAGS Wallpaper out of the famous MAGS Gretchen donor.
 This tremendous female is in the top 1% of the breed for SC, top 15% for stayability and top 20% for docility.
 You won't find one designed any better than MAGS Tapestry, she is passing this highly desirable conformation on to her progeny



MAGS Tapestry, dam of Lot 61 - 63.

Lim-Flex (75) Bull HP / HB ELCX 506C LFM 2095838 02.20.15

ELCX Covert 506C ET 62

	CED	BW	WW	YW	MA	CEM	SC	ST	DOC	CW	RE	YG	MS	\$MTI
EPD	11	1.4	65	109	25	8	1.25	24	22	36	0.04	0.06	0.39	63.52
%Rank	20	50	45	20	55	20	15	1	40	20	>95	>95	10	15

HUNTS HI-LITER 245G
JCL LODESTAR 27L
 LOGAN'S CHEERLEADER 280G

MYTTY IN FOCUS
MAGS TAPESTRY
 MAGS GRETCHEN 143L

WADDLES COBALT 3106
 TNUH MISS C245
 COLE FIRST DOWN 46D
 TTCC CONFIDENCE MAKER
 S A F FOCUS OF E R
 MYTTY COUNTESS 906
 EXLR DAKOTA 353G
 MAGS GRETCHEN

BW: 82 lbs.; WW: 692 lbs.; YW: 1,108 lbs.
 75% Lim-Flex, homozygous polled and homozygous black

Lim-Flex (75) Bull Polled / HB ELCX 503C LFM 2094773 02.17.15

ELCX Control 503C ET 63

	CED	BW	WW	YW	MA	CEM	SC	ST	DOC	CW	RE	YG	MS	\$MTI
EPD	11	0.7	69	109	25	8	1.25	24	22	36	0.04	0.06	0.39	64.64
%Rank	20	35	30	20	55	20	15	1	40	20	>95	>95	10	10

HUNTS HI-LITER 245G
JCL LODESTAR 27L
 LOGAN'S CHEERLEADER 280G

MYTTY IN FOCUS
MAGS TAPESTRY
 MAGS GRETCHEN 143L

WADDLES COBALT 3106
 TNUH MISS C245
 COLE FIRST DOWN 46D
 TTCC CONFIDENCE MAKER
 S A F FOCUS OF E R
 MYTTY COUNTESS 906
 EXLR DAKOTA 353G
 MAGS GRETCHEN

BW: 85 lbs.; WW: 670 lbs.; YW: 1,122 lbs.
 75% Lim-Flex, polled and homozygous black



JCL Lodestar 27L, sire fo Lots 61 - 63.

PB Limousin (100) Bull DP/DB ELCX 101C NPM 2085984 02.18.15

ELCX Contiene 101 C 64

	CED	BW	WW	YW	MA	CEM	SC	ST	DOC	CW	RE	YG	MS	SMTI
EPD	3	4.3	64	91	30	7	0.51	11	14	30	0.36	-0.018	-0.08	47.66
%Rank	95	>95	45	55	15	35	75	90	75	40	70	55	50	55

AUTO DOLLAR GENERAL 122R
BOHI TOP DOLLAR 7144T
 CARROUSELS PINA COLADA

LVLS SECRET WEAPON 4408K
 AUTO KYRIA 232K
 AUTO BLACK DAKOTA 129J
 ELMW GINNIE P58G
 WULFS HANDYMAN 4253H
NDED LITTLE WEEZA 901M
 SLVL DVFC LOUISE 362G

WULFS FRANCHISE 2443F
 MISS WOLFETTE 1111A
 SLVL BEEF 341E
 RR PUNCH COW 67X

BW: 78 lbs.; WW: 604 lbs.; YW: 1,201 lbs.

Purebred, double polled and double black

This son of BOHI Top Dollar 7144T is from a daughter of Wulf's Handyman

He is a purebred bull that possesses all good things about the Limousin breed in that he is big, rugged, heavily muscled and very stout made

If you are in need of a purebred Limousin bull then take a look here at one with tons of performance

Lim-Flex (43) Bull HP / DB ELCX 566B LFM 2089568 12.30.14

ELCX Power 566B 65

	CED	BW	WW	YW	MA	CEM	SC	ST	DOC	CW	RE	YG	MS	SMTI
EPD	8	1	59	97	28	7	0.9	14	5	30	0.43	-0.11	0.52	67.77
%Rank	45	40	70	40	30	35	35	70	95	40	60	75	4	10

G A R PREDESTINED
AUTO WILL POWER 160X
 AUTO REBECA 292S

B/R NEW DESIGN 036
 G A R EXT 4206
 LESF ASPHALT 9N
 EXLR REBECA 1019P
 JCL LODESTAR 27L
 WULFS GERALDINE 7057G
 C A FUTURE DIRECTION 5321
 BT EVERELDA ENTENSE 838L

BW: 80 lbs.; WW: 615 lbs.; YW: 1,242 lbs.

43% Lim-Flex, homozygous polled and double black

ELCX Power 566B ranks in the top 4% of the breed for marbling with a .52 and top 10% of the breed for SMTI with a 67.77

Sired by the big league Pinegar and Edwards herd sire AUTO Will Power 160X

From a Lance Hall bred cow that has been a top producer in the ELCX program, LH Whimsical 566W

Lim-Flex (43) Bull DP/DB ELCX 207C LFM 2090349 01.02.15

ELCX Crank 207 C 66

	CED	BW	WW	YW	MA	CEM	SC	ST	DOC	CW	RE	YG	MS	SMTI
EPD	13	-0.8	53	82	20	8	0.76	10	9	18	0.23	-0.08	0.39	60.81
%Rank	10	15	90	75	95	20	55	95	90	80	90	80	10	15

MAGS XYLOID
ELCX TURNING POINT 641 Z
 GPFX MS BLUEPRINT

BR MIDLAND
BRICTON TIFFANY 6207
 BRICTON TIFFANY 4080

DHVO DEUCE 132R
 BOHI RHONDA 314R
 TNUH BLUE PRINT 245H
 MAGS PALOOKA
 TWIN VALLEY PRECISIONE161
 BR ROYAL LASS 7036-19
 B/R DESTINATION 727-928
 BOYD B/R RUBY OF TIFFANY 1074

BW: 65 lbs.; WW: 615 lbs.; YW: 1,118 lbs.

43% Lim-Flex, double polled and double black

Here is a son of ELCX Turning Point 641Z, a big time 87.5% Limousin herd sire that topped the past ELCX sale and was purchased by P Bar S Ranch, Sand Springs, OK. This double polled, double black son of MAGS Xyloid has definitely captured the attention of the many that have seen him. He is extremely heavy in his bone structure, big footed and very soft in his pasterns. He is massive in his thickness and the amount of mass that he has.

By selecting ELCX Crank 207C you will add pounds, performance and a prominent look to a set of calves if you consider this young bull.



ELCX Turning Point 641 Z, sire of Lot 66..

Lim-Flex (75) Bull DP/DB ELCX 123B LFM 2089563 12.02.14

ELCX Bring The Heat 123B 67

	CED	BW	WW	YW	MA	CEM	SC	ST	DOC	CW	RE	YG	MS	SMTI
EPD	7	1.8	71	107	30	9	0.67	14	20	36	0.49	-0.06	0.05	53.67
%Rank	55	60	20	20	15	10	65	70	50	20	45	85	35	35

BOHI TITELIST 7050T
TW FIRE N' ICE
 MAGS UPPER SAUNTER

LH RODEMASTER 338R
LH YAKIMA LADY 123Y
 LH WILMA 538W

AUTO DOLLAR GENERAL 122R
 CARROUSELS PINA COLADA
 LH RODEMASTER 338R
 MAGS SAUNTER
 JCL LODESTAR 27L
 VERMILION E BLACKBIRD9546
 MCBN TARGET 705T
 MISS WULFETTE 1013L

BW: 76 lbs.; WW: 610 lbs.; YW: 1,199 lbs.

75% Lim-Flex, double polled and double black

He ranks in the top 10% for CEM with a 65, top 15% of the breed for MK with a 30 and total maternal with a 65

Sired by the big numbered once reserve national champion Lim-Flex sire TW Fire N' Ice

From a daughter of LH Rodemaster 338R



LOT 67

Lim-Flex (50) Bull HP / DB ELCX 116B LFM 2106024 12.02.14

ELCX Boom Shot 116B 68

	CED	BW	WW	YW	MA	CEM	SC	ST	DOC	CW	RE	YG	MS	SMTI
EPD	9	1.5	72	113	26	5	0.82	-	18	38	1.14	-0.27	0.34	66.43
%Rank	35	50	20	15	45	65	45	-	55	15	1	30	15	10

SITZ UPWARD 307R
EXAR UPSHOT 0562B
 EXAR BARBARA T020

WULFS URBAN COWBOY 2149U
DBGR WINDSONG 222Z
 MAGS PHOANTOMS PRIZE

CONNELLY ONWARD
 SITZ HENRIETTA PRIDE 81M
 ISU IMAGING Q 9111
 LCC MC HENRY BARBAR MG382
 WULFS REALTOR 1503R
 WULFS MEADOW GRASS 249M
 GPFF BLAQUE RULON
 ALCM KOOL TUNES

BW: 68 lbs.; WW: 618 lbs.; YW: 1,180 lbs.

25% Lim-Flex, homozygous polled and double black

Here is one big numbered Lim-Flex herd sire prospect you will appreciate for his conformation but also for his EPD profile

He ranks in the top 1% in the breed for REA with a 1.14, top 10% for SMTI with a 66.43 and top 15% for YW with 113, CW with a 38 and MB with a .34

This is the kind of bull that will ad better than breed average numbers and make a calf crop uniform



LOT 68

Lim-Flex (43) Bull DP/Black ELCX 020B LFM 2089561 11.14.14

ELCX All The Way 020 B 69

	CED	BW	WW	YW	MA	CEM	SC	ST	DOC	CW	RE	YG	MS	SMTI
EPD	8	2.7	65	95	26	7	0.83	12	16	30	0.1	-0.02	0.44	65.83
%Rank	45	80	45	45	45	35	45	85	65	40	>95	90	10	10

G A R PREDESTINED
MAGS UNDOING
 EXLR 199H

TPIE RED CANYON LC 9347
MINE CANYON'S CASH 1020Y
 ARWL PLD CASHABANKA 7131T

B/R NEW DESIGN 036
 G A R EXT 4206
 WULFS FANFARE 4055F
 EXLR 558F

LUCHT GRAND CANYON S41
 TPIE GOLD RIB 2091
 WULFS NOBEL PRIZE 3861N
 MINE PLD DOLLEY 3205N

BW: 76 lbs.; WW: 613 lbs.; YW: 1,168 lbs.
 43% Lim-Flex, double polled and double black
 Sired by the now deceased MAGS Undoing, the son of GAR Predestined from the big numbered donor EXLR 199H
 His dam is a 50% Red Angus x Limousin cross female. She is a daughter of the purebred Red Angus sire TPIE Red Canyon that is the lead sire for Minerich Land & Cattle Co.

Lim-Flex (68) Bull HP/Black ELCX 440B LFM 2077004 11.09.14

ELCX Butler 440B ET 70

	CED	BW	WW	YW	MA	CEM	SC	ST	DOC	CW	RE	YG	MS	SMTI
EPD	7	1.8	61	93	35	5	0.98	10	10	28	0.2	-0.07	0.15	54.49
%Rank	55	60	60	50	3	65	35	95	90	45	90	80	25	30

AUTO BLACK DAKOTA 129J
EXLR REVIEW 7153R
 EXLR 199H

LH RODEMASTER 338R
CHR YEAR TO YEAR 137Y
 MAGS SHUTTERBUG

EXLR DAKOTA 353G
 DFCL JET SET BPC 34Y
 WULFS FANFARE 4055F
 EXLR 558F

JCL LODESTAR 27L
 VERMILION E BLACKBIRD9546
 BR MIDLAND
 MAGS LADY ACE

BW: 74 lbs.; WW: 625 lbs.; YW: 1,180 lbs.
 68% Lim-Flex, black and homozygous polled
 Sired by the red and homozygous polled purebred bull EXLR Review 7153R from a daughter of LH Rodemaster 338R back to the MAGS Shutterbug female
 He ranks in the top 3% of the breed for milk with a 35 and top 10% for total maternal with a 66

Lim-Flex (50) Bull HP/Black ELCX 444B LFM 2072960 11.10.14

ELCX Ballot 444B ET 71

	CED	BW	WW	YW	MA	CEM	SC	ST	DOC	CW	RE	YG	MS	SMTI
EPD	12	0.9	63	88	30	11	0.85	-	12	22	0.85	-0.39	0.23	60.46
%Rank	15	40	50	65	15	1	45	-	85	70	4	10	20	20

CONNEALY REFLECTION
CONNEALY IMPRESSION
 PEARL PAMMY OF CONANGA 19

TNUH BLUE PRINT 245H
MAGS ROSE MARIE
 MAGS MANDA

BON VIEW NEW DESIGN 878
 HAPPY GRILL OF CONANGA 62
 VERMILION DATELINE 7078
 PEARL JAM OF CONANGA 6114
 WADDLES COBALT 3106
 TNUH MISS C245
 EXLR DAKOTA 353G
 MAGS JEWEL

BW: 78 lbs.; WW: 584 lbs.; YW: 1,215 lbs.
 50% Lim-Flex, black and homozygous polled
 Now here is your future herd sire prospect!
 Sired by the leading Angus sire Connealy Impression and from the prominent donor MAGS Rose Marie, a daughter of TNUH Blue Print from the famed MAGS Manda
 He ranks in the top 1% of the breed for CEM with a 1, top 4% for REA with a .85, top 10% for YG with a -0.39 and top 15% for CED with a 12 and MK with a 30



Lim-Flex (50) Bull HP/DB ELCX 622B LFM 2089616 11.10.14

ELCX Dollar Tree 622B 72

	CED	BW	WW	YW	MA	CEM	SC	ST	DOC	CW	RE	YG	MS	\$MTI
EPD	7	1.5	65	102	28	11	0.98	15	15	33	0.22	0.01	0.64	72.83
%Rank	55	50	45	30	30	1	35	60	70	30	90	95	2	2

AUTO DOLLAR GENERAL 122R LVLS SECRET WEAPON 4408K
BOHI TOP DOLLAR 7144T AUTO KYRIA 232K
 CARROUSELS PINA COLADA AUTO BLACK DAKOTA 129J
 G A R PREDESTINED ELMW GINNIE P58G
RITA 6M22 OF RITA 3823 PRED B/R NEW DESIGN 036
 RITA 3823 OF RITA 021 878 G A R EXT 4206
 BON VIEW NEW DESIGN 878
 RITA 021 OF 7R11 RDA

BW: 75 lbs.; WW: 692 lbs.; YW: 1,285 lbs.
 50% Lim-Flex, double black and homozygous polled
 Talk about a herd sire prospect that knows he has it going on!
 He stands very upright and confident in his stance and is one that will sire a set of calves that will certainly have the look
 Sired by BOHI Top Dollar 7144T and from a purebred Angus daughter of GAR Predestined



LOT 72

Lim-Flex (25) Bull HP/Black ELCX 439B LFM 2073408 11.04.14

ELCX Baldwin 439B ET 73

	CED	BW	WW	YW	MA	CEM	SC	ST	DOC	CW	RE	YG	MS	\$MTI
EPD	10	-0.1	66	117	29	5	1.23	-	15	42	0.87	-0.08	0.69	76.13
%Rank	25	20	40	10	20	65	15	-	70	10	4	80	1	1

SITZ UPWARD 307R CONNEALY ONWARD
EXAR UPSHOT 0562B SITZ HENRIETTA PRIDE 81M
 EXAR BARBARA T020 ISU IMAGING Q 9111
 LCC MC HENRY BARBAR MG382
 S A V NET WORTH 4200 S A V 8180 TRAVELER 004
MINE PLD NET WORTH 8043U S A V MAY 2410
 MINE PLD BUTTERCREME CARROUSELS NASDAQ
 MINE COTTONBALL 0119K

BW: 62 lbs.; WW: 512 lbs.; YW: 1,254 lbs.
 25% Lim-Flex, black and homozygous polled
 This young 25% Lim-Flex herd sire prospect is sired by the big league Angus sire EXAR Upshot 0562B.
 He is a breed leading outcross 25% Lim-Flex sire. He is one of the biggest numbered bulls in the sale with a 110 for yearling weight, 29 for milk and .69 for marbling and .87 for ribeye and \$MTI with a 76.13
 His dam MINE Pld Net Worth 8043U is one of the favorites for Edwards Land & Cattle Co. She is a daughter of SAV Net Worth 4200 and back to a daughter of the once national champion Carrouseles Nasdaq
 This young bull all the great things stacked in his favor. He stems from a proven lineage of cattle, huge numbered and to top it all off he is very well made



LOT 73



PBRS Trouble 127T, dam of Lot 74.

Lim-Flex (62) Bull DP/HB ELCX 425B LFM 2074234 10.04.14

ELCX Ole Smoky 425B ET 74

	CED	BW	WW	YW	MA	CEM	SC	ST	DOC	CW	RE	YG	MS	\$MTI
EPD	10	1.7	63	97	17	8	0.75	14	21	30	0.21	0.02	0.37	62.44
%Rank	25	55	50	40	>95	20	55	70	45	40	90	95	10	15

DHVO DEUCE 132R
MAGS XYLOID
 BOHI RHONDA 314R
 JCL LODESTAR 27L
PBRS TROUBLE 127T
 SEDGWICKS PRIDE 3465

GPF BLAQUE RULON
 AMY JO DHAN 20L
 EXLR NEW GENERATION 071M
 DAVIS ROSETTA 9514
 HUNTS HI-LITER 245G
 LOGAN'S CHEERLEADER 280G
 BON VIEW NEW DESIGN 1407
 SEDGWICKS PRIDE 4651

BW: 80 lbs.; WW: 610 lbs.; YW: 1,302 lbs.

62% Lim-Flex, double polled and homozygous black

Sired by the All-American Futurity Supreme Champion sire MAGS Xyloid. He is a son of PBRS Trouble 127T. She is one of the finest 50% Lim-Flex females anywhere in the land. Her sire JCL Lodestar 27L, now deceased has earned elite status with his daughters in production and the EPD's that he has earned over the years. This JCL Lodestar daughter posts a -1.3 for birth, 99 for yearling weight, 32 for milk, .43 for marbling and 55 for MTI. She is super big boned, soft in her pasterns and very fluid in her movement. To have a female that is built that well from the ground up is exactly what it takes to create future progeny that will do well. She is so long bodied, square out of hip and very appealing up through her head, neck and shoulders.

This bull is big footed, sound and very structurally correct

Reference Sires

Lim-Flex (60) Bull HP/HB PBRS 3120A LFM 2041418 04.21.13

PBRS Add It Up 3120 A

	CED	BW	WW	YW	MA	CEM	SC	ST	DOC	CW	RE	YG	MS	\$MTI
EPD	5	4.8	70	106	27	5	0.8	9	16	40	0.39	-0.04	0.27	61.19
%Rank	70	>95	25	25	40	60	40	90	50	15	65	85	25	20

PBRS MILESTONE 137Y
PBRS Y NOT ME 165Y

LH U HAUL 135U
 MAGS UNIVERSAL TIME
 SPRNG CRKS URLACHER 311U
 CARROUSELS PINA COLADA

Lim-Flex (75) Bull HP/Black BJLR 908Y LFM 1991065 05.02.11

WLR Reload C

	CED	BW	WW	YW	MA	CEM	SC	ST	DOC	CW	RE	YG	MS	\$MTI
EPD	2	5	86	125	18	7	0.7	17	0	51	0.76	-0.16	-0.16	51.51
%Rank	95	>95	3	10	90	35	50	30	95	3	15	60	55	40

LH RODEMASTER 338R
MAGS PHANTOMS PRIZE

JCL LODESTAR 27L
 VERMILION E BLACKBIRD9546
 GPF BLAQUE RULON
 ALCM KOOL TUNES

Lim-Flex (75) Bull Polled/HB MAGS 3712X LFM 1958319 03.07.10

MAGS Xyloid B

	CED	BW	WW	YW	MA	CEM	SC	ST	DOC	CW	RE	YG	MS	\$MTI
EPD	8	2.7	59	92	9	8	0.7	9	30	29	0.05	0.04	0.15	53.04
%Rank	40	75	60	50	>95	25	50	90	10	40	95	95	30	35

DHVO DEUCE 132R
BOHI RHONDA 314R

GPF BLAQUE RULON
 AMY JO DHAN 20L
 EXLR NEW GENERATION 071M
 DAVIS ROSETTA 9514

Lim-Flex (62) Bull HP/HB BJLR 499Y LFM 2013659 12.23.11

WLR Game of Thrones D

	CED	BW	WW	YW	MA	CEM	SC	ST	DOC	CW	RE	YG	MS	\$MTI
EPD	7	2.3	70	105	16	6	0.85	10	12	36	0.72	-0.23	0.08	55.81
%Rank	50	70	25	25	95	50	40	85	70	20	20	45	35	30

MAGS WIGGLER
WLR URSULA 499U

WULFS TITUS 2149T
 MAGS SNICKERS
 DR J ANALYST M250
 MAGS PHANTOMS PRIZE



PBRS Add It Up 3120



MAGS Xyloid



WLR Reload



WLR Game of Thrones

Lim-Flex (37) Bull HP/HB AUTO 160X LFM 1980421 09.12.10

AUTO Will Power 160X

E

	CED	BW	VWV	YW	MA	CEM	SC	ST	DOC	CW	RE	YG	MS	SMTI
EPD	8	0.2	60	99	27	7	1.2	16	5	30	0.49	-0.14	0.6	71.27
%Rank	40	30	55	35	40	35	20	40	90	35	45	65	10	10

G A R PREDESTINED

B/R NEW DESIGN 036

G A R EXT 4206

AUTO REBECA 292S

LESF ASPHALT 9N

EXLR REBECA 1019P

Lim-Flex (62) Bull DP/HB ELCX 395B LFM 2070575 05.21.14

ELCX Draft Day 395 B

G

	CED	BW	VWV	YW	MA	CEM	SC	ST	DOC	CW	RE	YG	MS	SMTI
EPD	9	1.4	60	93	21	7	0.72	-	19	28	0.05	0.05	0.03	49.03
%Rank	35	50	65	50	85	35	55	-	55	45	>95	95	40	50

MAGS XYLOID

DHVO DEUCE 132R

BOHI RHONDA 314R

ELCX IDEAL 420Y

NDED EXTENDED 2U

AA 5295 IDEAL 164 FCA

Lim-Flex (50) Bull HP/Black ELCX 427B LFM 2072490 10.04.14

ELCX Bacardi 427B ET

I

	CED	BW	VWV	YW	MA	CEM	SC	ST	DOC	CW	RE	YG	MS	SMTI
EPD	11	-0.2	69	99	23	7	1.07	12	16	29	0.8	-0.23	0.15	58.05
%Rank	20	20	30	35	75	35	25	85	65	40	10	40	25	25

S A V BRILLIANCE 8077

S A V BISMARCK 5682

S A V BLACKCAP MAY 5270

WLR TAINTED LOVE 746X

WULFS URBAN COWBOY 2149U

MAGS PHANTOMS PRIZE

Lim-Flex (50) Bull HP/HB ELCX 208Y LFM 2009400 10.03.11

ELCX Postmaster 208Y

K

	CED	BW	VWV	YW	MA	CEM	SC	ST	DOC	CW	RE	YG	MS	SMTI
EPD	15	-1.3	62	106	25	13	0.5	12	17	32	0.12	0.1	0.58	69.3
%Rank	10	15	50	25	50	2	70	75	45	30	95	>95	15	15

MAGS WINSTON

BT CROSSOVER 758N

MAGS STRAWBERRY

SSTO SADIE 6854S

JCL LODESTAR 27L

THOMAS LUCY ROSE 9509

Lim-Flex (75) Bull HP/Black BTCW 105X LFM 1971882 04.20.10

TW Fire N' Ice

F

	CED	BW	VWV	YW	MA	CEM	SC	ST	DOC	CW	RE	YG	MS	SMTI
EPD	8	1.4	75	113	30	8	0.8	16	26	39	0.6	-0.03	0.05	54.75
%Rank	40	50	15	15	20	25	40	40	15	15	35	85	35	30

BOHI TITLELIST 7050T

AUTO DOLLAR GENERAL 122R

CARROUSELS PINA COLADA

MAGS UPPER SAUNTER

LH RODEMASTER 338R

MAGS SAUNTER

Lim-Flex (25) Bull HP/HB ELCX 363B LFM 2059017 01.03.14

ELCX Benchwarmer 363B

H

	CED	BW	VWV	YW	MA	CEM	SC	ST	DOC	CW	RE	YG	MS	SMTI
EPD	16	-2.1	54	103	24	11	1.7	19	27	29	-0.04	0.14	0.7	71.18
%Rank	2	3	85	30	65	1	1	20	0	40	>95	>95	1	3

MYTTY IN FOCUS

S A F FOCUS OF E R

MYTTY COUNTESS 906

SSTO SADIE 6854S

JCL LODESTAR 27L

THOMAS LUCY ROSE 9509

Angus Bull HP/Black 4050 AAA 18025516 03.01.14

Woodside Rito 4050 of OM3

J

	CED	BW	VWV	YW	MA	CEM	SC	ST	DOC	CW	RE	YG	MS	SMTI
EPD	17	-0.7	65	99	30	11	1.13	-	10	38	0.59	0.11	2.07	123.78
%Rank	1	15	45	35	15	1	20	-	90	15	30	>95	1	1

G A R PROPHET

C R A BEXTOR 872 5205 608

G A R OBJECTIVE 1885

RITA OF RITA 5F56 PRED

G A R PREDESTINED

RITA 5F56 OF 1198 FD

Angus Bull HP/DB 7046R AAA 15796904 09.06.07

RITO 7065 of Rita 5M46 OB

L

	CED	BW	VWV	YW	MA	CEM	SC	ST	DOC	CW	RE	YG	MS	SMTI
EPD	15	-2.2	54	96	32	4	1.3	11	8	25	0.42	-0.13	1.57	104.61
%Rank	10	10	75	40	15	70	15	80	85	55	60	65	1	1

S S OBJECTIVE T510 OT26

SS TRAVELER 6807 T510

S S MISS RITA R011 7R8

RITA 5M46 OF 2536 PRED

G A R PREDESTINED

G A R PRECISION 2536



AUTO Will Power 160X



TW Fire N' Ice



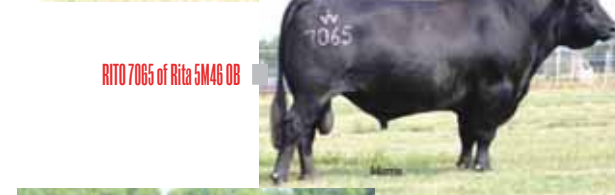
ELCX Benchwarmer 363B



ELCX Bacardi 427B



ELCX Postmaster 208Y



RITO 7065 of Rita 5M46 OB



Woodside Rito 4050 of OM3

R&R
MARKETING
1212 Laurel St, #1614
Nashville, TN 37203

**FIRST CLASS
PRE-SORTED
PAID**
Montezuma, Iowa
Permit No. 30



FALL FEMALE & BULL

PRODUCTION SALE

LIMOUSIN LIM-FLEX ANGUS

Catalog
designed
by
A
designs by
arin
www.designsbyarin.com

Saturday,
October 22, 2016
Beulaville, NC

Edwards
LAND & CATTLE CO.