



> APRIL 12, 2014



Annual Spring Sale



SCHEDULE OF EVENTS ...

Friday, April 11th
 Noon Cattle available for viewing
 Refreshments will be available

Saturday, April 12th
 8:00 a.m. Cattle available for viewing
 11:30 a.m. Complementary BBQ lunch served
 12:30 p.m. Sale starts (E.S.T.)

SALE DAY PHONES ..

Dexter Edwards910.290.0467
 Nicholas Edwards910.290.1424
 Randy Ratliff615.330.2735

AUCTIONEER ... Cody Lowderman

ACCOMMODATIONS ...

The Country Squire Vintage Inn & Winery910.296.1727
 748 NC Hwy 24&50 Warsaw, NC 28398 • www.countrysquireinn.com

Quality Inn of Warsaw.....910.293.2800
 2676 West NC 24, Warsaw, NC, US, 28398

Sleep Inn & Suites910.47.-0099
 129 Circuit Lane, Jacksonville, NC 28546

SALE ORDER & SUPPLEMENTAL INFORMATION ...

Friday, April 11th the sale order and supplemental information will be posted at www.RRMktg.com for your convenience.

GUARANTEE ... All cattle sell under the standard guarantee of the North American Limousin Foundation.

FINANCING ... For financing options please contact Dexter Edwards at 910.290.0467, Nicholas Edwards at 910.290.1424 or Randy Ratliff at 615.330.2735.

TRUCKING ... A trucking company will be on hand sale day to assist with any trucking that might be needed. Edwards Land & Cattle Co. will see to it that cattle will be delivered to several central locations to accommodate anyone that lives throughout the United States and Canada.

TERMS & CONDITIONS ... Terms of the sale are cash unless satisfactory credit arrangements have been made prior to the sale. A representative will be on hand sale day if your wishes are to insure your purchases. Please note: The sale manager is only an agent for the seller and has no responsibility other than those involved in conducting the sale. All persons who attend the sale do so at their own risk. Neither the sale manager nor Edwards Land & Cattle Co. assume liability, legal or otherwise for, any accidents which may occur.

DRIVING DIRECTIONS ... From Raleigh-Durham International Airport (RDU) to Edwards Land and Cattle Sale Facility take interstate I 40 east towards Wilmington/Benson. Continue on 40 East until exit 373 (Magnolia/Kenansville) turn left on 903 towards Kenansville, stay on 903 until intersection of Hwy 24. Take Hwy 24 east towards Beulaville. Stay on hwy 24 through Beulaville; go approximately 6 miles to Willard Edwards Rd on the left. The Sale Facility will be located approximately 1.5 miles on the left.

From Albert Ellis Airport (OAJ) take left onto NC HWY 111 to Haw Branch Rd. Take Haw Branch rd to Hwy 24 west. Willard Edwards Rd will be approximately 4 miles on the right. The Sale Facility will be located approximately 1.5 miles on the left.

From Wilmington International Airport (ILM) take I40West to exit 385 (Wallace/Beulaville). Take right towards Beulaville on Hwy NC-41. Travel 18 miles to intersection of 41/24 take hwy 24 east approximately 6 miles to Willard Edwards Rd on the left. The Sale Facility will be located approximately 1.5 miles on the left.

PAYMENTS ... All cattle must be paid for immediately following the conclusion of the sale. R & R Marketing Company will now be accepting credit cards the day of the sale.

SIGHT UNSEEN PURCHASE AGREEMENT ... If you are unable to attend the sale and want to speak with Dexter or Nicholas Edwards or Randy Ratliff then please don't hesitate to call. They will provide you with a complete satisfaction guarantee for the have purchased. If within 2 weeks from the date of the sale you are not satisfied with your purchased and how they were described to you then the Edwards family will gladly take the animal back.

SALE CONSULTANTS ...

Mark Smith515.229.5227
 Bill Helton256.962.0256

SALE MANAGEMENT ...



(L#2845)

**R&R MARKETING
 COMPANY**

Randall O. Ratliff • 615.330.2735
 Randy@RRMktg.com • www.RRMktg.com
 PO Box 281677, Nashville, TN 37228

If you need assistance with your purchases or want to discuss the genetics selling then please feel free to contact R & R Marketing Company. As a paid marketing agent for Edwards Land & Cattle we take pride in the opportunity to work closely with this program. We can assist you with your phone order and/or handle your bid in the most confidential manner. Email, call or text and we will be more than happy to assist.

Saturday, April 12, 2014

At our Sale Facility, 314 Willard Edwards Rd, Beulaville, NC 28518

It is a pleasure to welcome you to our Annual Spring Production Sale. The sale will be held at our farm located at 314 Willard Edwards Road Beulaville, North Carolina. The Edwards Land and Cattle Family are extremely pleased to host you at our sale facility. We will be presenting you with some of the best quality genetics in the Limousin breed. ELCX we are committed to producing the kind of genetics that will be useful and profitable in your operations.

The Angus Eastern Regionals will be held in Raleigh, NC this summer June 12 - 15, 2014 this will be a great opportunity to purchase some really outstanding Angus show females, off some of the breed's best ge-

netics. We will also be showcasing some of the Limousin breed best show heifer's prospect; which you will be able to show in the upcoming show season. Some of these are sired by the 2013 Silver Medal Sire, MAGS XYLOID, along with many other leading breed genetics.

As you are aware we are a family operation that takes great pride in our cattle and would only like to provide you with quality Limousin and Lim-flex genetics that will work in any cattle operation. Our number one goal is to create a long lasting relationship with our customers; this is why we only provide you with our finest stock. All cattle sale under the standard guarantee of the North American Limousin Foun-

dation. If you need financing, trucking arrangements, or information about selling calves for a premium, we will gladly assist you.

We will hold a reception at the sale barn on Friday night before the sale and we will provide you with a down home southern barbecue on the day of the sale. The whole family looks forward to seeing you, if you need any help with directions or accommodations please don't hesitate to call us.

Sincerely,
Dexter Edwards
Edwards Land & Cattle Company

Dexter and Nicholas Edwards
314 Willard Edwards Road • Beulaville, NC 28518
910.298.3012 • FAX: 910.298.6155 • edwardslimousin@earthlink.net
Nicholas, cell: 910.290.1424 • Nicholas, email: npedwards07@yahoo.com





Morris

Lot 1 > ELCX ALEXUS 355A

Selling 3 full sibs



Lot 3> ELCX AMERICA 353A

MAGS Satchel, dam of Lots 1 - 3.



Lot 2> ELCX AMANDA 354A

1 ELCX Alexis 355A

Lim-Flex (62.5) Cow Horned/DB ELCX 355A 11.17.13

2 ELCX Amanda 354A

Lim-Flex (62.5) Cow HP/HB ELCX 354A 11.16.13

3 ELCX America 353A

Lim-Flex (62.5) Cow DP/HB ELCX 353A 11.16.13

DHVO DEUCE 132R	GPFF BLAQUE RULON
MAGS XYLOID	AMY JO DHAN 20L
EXLR LUVLY 084F	EXLR NEW GENERATION 071M
	DAVIS ROSETTA 9514
BR MIDLAND	TWIN VALLEY PRECISIONE161
MAGS SATCHEL	BR ROYAL LASS 7036-19
MAGS LADY ACE	EXLR INTRIGUE 361G
	CHAZ MISS GRETA 7003G

CED	BW	WW	YW	MA	CEM	SC	ST	DOC	CW	RE	YG	MS	SMTI
9	0.9	45	85	26	3	0.8	7	16	28	0.16	0.21	0.21	49

Here are three flushmate sisters that we think you might be impressed with when you see them on sale day. They are sired by the Edwards Land & Cattle Co. service sire and once All American Futurity Supreme Champion sire MAGS Xyloid 3712X. Xyloid continues to sire excellence with creating very well made show cattle that have dominated the show ring over the last year. He is the polled, homozygous black son of DHVO Deuce back to the now deceased BOHI Rhonda 314R. These three show heifer prospects are from the big league donor MAGS Satchel, a daughter of BR Midland from the ever-popular MAGS Lady Ace. All three of these heifers will be offered but we can assure you that it will be a challenge to figure out which one might be your favorite.



Lot 4>
ELCX ARENA 14A

4

ELCX Arena 14A

PB Limousin (100) Cow DP/DB ELCX 14A NPF 2045298 10.01.13

AUTO DOLLAR GENERAL 122R LVL5 SECRET WEAPON 4408K
BOHI TOP DOLLAR 7144T AUTO KYRIA 232K
 CARROUSELS PINA COLADA AUTO BLACK DAKOTA 129J
 ELMW GINNIE P58G
 GPFF BLAQUE RULON BLACK DIAMOND
GPML BLAQUE CIALIS QUAIL RUN RAMONA BP
 NICO DESIRAE COLE FIRST DOWN 46D
 NICO POLLED PORSHA

CED	BW	WW	YW	MA	CEM	SC	ST	DOC	CW	RE	YG	MS	\$MTI
8	2.8	48	91	26	5	0.7	-	14	20	0.45	0.01	0.05	46
P	P	P	P	P	P	P	-	P	P	P	P	P	

ELCX Arena 14A is a double polled, double black purebred heifer. She is one of the premier show heifers proudly representing the Edwards Land & Cattle Co. program. This October heifer is made as perfect as you would ever want one to be. She is super sound in her structure, soft footed and very fluid in her movement. From the ground up she is perfect in every way and when you really study her she is absolutely gorgeous. She is extremely deep in her flank and with tremendous volume and capacity. We love her strength down her top line, squareness out of her hip and her extreme amount of muscle. She is a daughter of the prominent Edwards and Magness herd sire BOHI Top Dollar 7144T, the proven son of AUTO Dollar General 122R from the once national champion female Carrouseles Pina Colada. Her dam GPML Blaque Cialis is now working for our good friends at Spring Creeks Cattle Co., Wauzeka, WI.

5

ELCX Anya 344A

Lim-Flex (63) Cow DP/Red ELCX 344A LFF 2045299 12.27.13
 BOHI TITLELIST 7050T AUTO DOLLAR GENERAL 122R
TW FIRE N' ICE CARROUSELS PINA COLADA
 MAGS UPPER SAUNTER LH RODEMASTER 338R
 MAGS SAUNTER
 BR MIDLAND TWIN VALLEY PRECISIONE161
MAGS SATCHEL BR ROYAL LASS 7036-19
 MAGS LADY ACE EXLR INTRIGUE 361G
 CHAZ MISS GRETA 7003G

CED	BW	WW	YW	MA	CEM	SC	ST	DOC	CW	RE	YG	MS	\$MTI
11	0.6	50	95	29	7	0.9	-	16	35	0.28	0.27	0.28	53
P	P	P	P	P	P	P	-	P	P	P	P	P	

- Red and double polled
- Here is a fancy show heifer prospect that represents a prominent mating from the heart of the ELCX program
- Sired by the once national champion Lim-Flex sire TW Fire N' Ice, the big numbered son of BOHI Titlelist 7050T from the Edwards donor MAGS Upper Saunter, a proven daughter of LH Rodemaster 338R
- Her dam is MAGS Satchel, the leading Edwards donor and daughter of BR Midland from the famed MAGS Lady Ace
- We love the profile, balance and the show look that this young red, double polled heifer has



6

ELCX Amazon 34A

Lim-Flex (38) Cow DP/DB ELCX 34A LFF 2046535 04.19.13
 DHVO DEUCE 132R GPFF BLAQUE RULON
MAGS XYLOID AMY JO DHAN 20L
 BOHI RHONDA 314R EXLR NEW GENERATION 071M
 TC TOTAL 410 DAVIS ROSETTA 9514
KC RITA 34U BON VIEW DESIGN 208
 G A R PRECISION 815 TC ERICA EILEEN 2047
 GAR PRECISION 1680
 G A R T510 TRAVELER 1042

CED	BW	WW	YW	MA	CEM	SC	ST	DOC	CW	RE	YG	MS	\$MTI
8	0.2	49	98	29	1	0.2	-	14	35	-0.35	0.52	0.46	57
P	P	P	P	P	P	P	-	P	P	P	P	P	

- Homozygous black and double polled
- Here is a fancy and very well made show heifer prospect
- She is sired by the once All American Futurity Supreme Champion sire MAGS Xyloid and from a big numbered Angus female
- Her dam is KC Rita 34U, a daughter of TC Total 410 from a daughter of GAR Precision 1680 that is huge numbered and one of the finest in the ELCX Angus program. She posts a .70 for marbling, .78 for ribeye and 94.82 for SB
- This young heifer is extreme up through her front end, long in her neck and very appealing from the side profile
- She is huge footed, soft in her pasterns and very stylish in her look



7

ELCX Adele 343A

Lim-Flex (50) Cow DP/HB ELCX 343A 11.08.13
 G A R PREDESTINED B/R NEW DESIGN 036
AUTO WILL POWER 160X G A R EXT 4206
 AUTO REBECA 292S LESF ASPHALT 9N
 EXLR REBECA 1019P
 LH RODEMASTER 338R JCL LODESTAR 27L
LH TWISTED LADY 258T VERMILION E BLACKBIRD9546
 LH RITUAL 217R GPFF BLAQUE RULON
 CHR BLACK HEIRESS 084N

CED	BW	WW	YW	MA	CEM	SC	ST	DOC	CW	RE	YG	MS	\$MTI
8	0.7	51	67	26	5	0.6	10	6	28	0.00	0.37	35	55
-	-	-	-	-	-	-	-	-	-	-	-	-	

- Here is a fancy made, stylish 50% Lim-Flex show heifer prospect
- She is sired by the big numbered and \$35,000 valued half interest sire AUTO Will Power 160X. He is a son of GAR Predestined from the big time donor AUTO Rebeca 292S. He is one of the leading herd sires in the ELCX program and semen interest is owned with Pinegar Limousin, Springfield, MO
- Her dam is the leading donor for Edwards and Twin Willows Farm, Springfield, MO, LH Twisted Sister 258T. She is a very well made daughter of LH Rodemaster 338R that continues to amaze us all with her producing ability
- This young November heifer has brood cow written all over her and we think you will agree that she will make a top show heifer and then be a top brood cow in the very near future





Morris

8

ELCX 657A

Lim-Flex (62.5) Cow HP/HB ELCX 657A 09.20.13

BON VIEW NEW DESIGN 1407 B/R NEW DESIGN 036
LVLS 3202U BON VIEW PRIDE 664
 LVLS 9202S LVLS FARMER JOHN 7428P
 LVLS9202N
 CFLX WILD CARD DHVO DEUCE 132R
RVDR XTRA SHY 657X JCL PEPPERMINT
 PBRs TIMELESS 247T JCL LODESTAR 27L
 SEDGWICKS BLACKAP 4364

- Homozygous polled and homozygous black
- This young show heifer is sired by the Massey herd sire LVLS 3202U, the big numbered son of Bon View New Design 1407 from a daughter of LVLS Farmer John 7428P back to a daughter of LVLS Polled Black Jack. He has earned a -1.1 for birth, 101 for yearling weight, 37 for milk and .55 for marbling
- Her dam is a 75% Lim-Flex double homozygous female now working in the Edwards program. She is a daughter of the once national sale top selling bull CFLX Wild Card that is now working in the Council Family program. Her dam is PBRs Timeless 247T, a daughter of JCL Lodestar 27L that is working in the Wulf Cattle program in Morris, MN.
- This heifer is big numbered and very well made and will definitely get your attention on sale day

CED	BW	WW	YW	MA	CEM	SC	ST	DOC	CW	RE	YG	MS	\$MTI
11	-1.1	56	101	37	5	0.7	18	10	54	-0.19	0.46	0.55	63
8	1.0	52	100	20	4	0.7	-	-	26	0.12	0.19	0.15	50

9

ELCX Amazine 67 A

Lim-Flex (44) Cow DP/DB ELCX 67A LFF 2045287 10.22.13

G A R PREDESTINED
AUTO WILL POWER 160X
 AUTO REBECA 292S

B/R NEW DESIGN 036
 G A R EXT 4206
 LESF ASPHALT 9N
 EXLR REBECA 1019P
 BT CROSSOVER 758N
 MAGS STRAWBERRY
 CRSL 5064R
 AA 5295 IDEAL 164 FCA

MAGS WINSTON
ELCX YES 67 Y
 ELCX 67 W

CED	BW	WW	YW	MA	CEM	SC	ST	DOC	CW	RE	YG	MS	SMTI
10	-0.1	47	96	29	3	-	-	-	27	-0.23	0.45	0.49	58
P	P	P	P	P	P	-	-	-	P	P	P	P	

- Double polled and double black
- This heifer is appropriately names ELCX Amazing for the exact reason that you would imagine...she really is truly amazing!
- She is sired by the leading Edwards herd sire AUTO Will Power 160X, the 37.5% Lim-Flex son of GAR Predestined from the leading donor AUTO Rebeca 292S. His first calves are very impressive as you will see with this young show heifer prospect
- Her dam is a daughter of MAGS Winston back to a daughter of CRSL 5064R
- This young female posts a superb set of EPD's with a -0.1 for birth, 96 for yearling weight, 29 for milk and .49 for marbling



10

ELCX Angelina 340A

Lim-Flex (50 Cow DP/HB ELCX 340A LFF 2046920 10.01.13

TC ABERDEEN 759
EBFL YPSILANTI 420Y
 MAGS RAMADA

C R A BEXTOR 872 5205 608
 TC BLACKBIRD 4034
 TNUH BLUE PRINT 245H
 MAGS MANDA
 S A V 8180 TRAVELER 004
 S A V MAY 2410
 CARROUSELS NASDAQ
 MINE COTTONBALL 0119K

S A V NET WORTH 4200
MINE PLD NET WORTH 8043U
 MINE PLD BUTTERCREME

CED	BW	WW	YW	MA	CEM	SC	ST	DOC	CW	RE	YG	MS	SMTI
5	1.4	54	104	35	2	0.5	-	12	39	-0.03	0.42	0.33	55

- This young 50% Lim-Flex show heifer prospect is sired by the \$100,000 valued sire EBFL Ypsilanti 420Y. He is the breed leading outcross 50% Lim-Flex sire. He is one of the biggest numbered bulls in the business with a 103 for yearling weight, 40 for milk and .42 for marbling
- Her dam MINE Pld Net Worth 8043U is one of the favorites for Edwards Land & Cattle Co. She is a daughter of SAV Net Worth 4200 and back to a daughter of the once national champion Carrouseles Nasdaq
- This young heifer all the great things stacked in her favor. She stems from a proven lineage of cattle, huge numbered and to top it all off she is very well made



Lot 10
Reference>
 MINE PLD
 NET WORTH
 8043U



11

ELCX Oh No 015A

Lim-Flex (38) Cow HP/DB ELCX 015A LFF 2046550 04.13.13
 BOHI TITLELIST 7050T AUTO DOLLAR GENERAL 122R
TW FIRE N' ICE CARROUSELS PINA COLADA
 MAGS UPPER SAUNTER LH RODEMASTER 338R
 MAGS SAUNTER
 BON VIEW NEW DESIGN 878 B/R NEW DESIGN 036
MC BLACKCAP 2015 BON VIEW GAMMER 85
 DALTONS BLACKCAP 075 LLF GA ROCK 670
 DALTONS MISS BLACKBIRD 39

CED	BW	WW	YW	MA	CEM	SC	ST	DOC	CW	RE	YG	MS	\$MTL
-	2.2	47	89	29	-	0.72	-	-	38	0.04	0.36	0.32	0
-	-	-	-	-	-	-	-	-	P	P	P	P	-

- Homozygous polled and double black
- This daughter of TW Fire N' Ice 104X will make you appreciate Lim-Flex cattle. She is extremely deep bodied, very easy in her condition and has the prominent brood cow look to her and is very maternal in her appearance.
- TW Fire N' Ice has proven himself as a true breeding bull after he won the prominent National Lim-Flex show. We appreciate his outcross pedigree, extreme number package and his true performance
- Her dam is a daughter of Bon View New Design 878 that is a top producer in the ELC Angus program



12

ELCX A Plus 058A

Lim-Flex (38) Cow HP/DB ELCX 058A LFF 2046562 04.25.13
 BOHI TITLELIST 7050T AUTO DOLLAR GENERAL 122R
TW FIRE N' ICE CARROUSELS PINA COLADA
 MAGS UPPER SAUNTER LH RODEMASTER 338R
 MAGS SAUNTER
 CONNEALY ONWARD CONNEALY LEAD ON
44 BLACKBIRD 91058 ALTUNE OF CONANGA 6104
 ACF BLACKBIRD 9186 V D A R LUCYS BOY
 DAVIS YR BLACKBIRD 558H

CED	BW	WW	YW	MA	CEM	SC	ST	DOC	CW	RE	YG	MS	\$MTL
12	-0.4	51	104	33	6	-	-	-	44	-0.25	0.57	0.44	57
P	P	P	P	P	P	-	-	-	P	P	P	P	-

- Homozygous polled and double black
- Sired by the once national champion Lim-Flex sire TW Fire N' Ice 104X, the leading son of BOHI Titlelist from a daughter of LH Rodemaster from a daughter of BR Midland out of MAGS Lady Ace
- Her dam is 44 Blackbird 91058, a daughter of Connealy Onward that has earned a milk of 26, marbling of .75 and ribeye of .56
- This heifer is huge numbered, extremely big bodied and very maternal in her look



13

ELCX Amie 496A

Lim-Flex (37.5) Cow HP/DB ELCX 496A -- 03.25.13
 BOHI TITLELIST 7050T AUTO DOLLAR GENERAL 122R
TW FIRE N' ICE CARROUSELS PINA COLADA
 MAGS UPPER SAUNTER LH RODEMASTER 338R
 MAGS SAUNTER
 G A R PREDESTINED B/R NEW DESIGN 036
BOBO RITA 496U G A R EXT 4206
 RAY RITA 237 BROOKS EXT 792
 CHR BLACK HEIRESS 084N

CED	BW	WW	YW	MA	CEM	SC	ST	DOC	CW	RE	YG	MS	\$MTL
6	0.2	53	103	28	4	0.4	-	8	29	0.23	0.15	0.10	26
-	-	-	-	-	-	-	-	-	-	-	-	-	-

- Homozygous polled and double black
- This young heifer is extreme in her depth of body, depth of flank and her over all capacity. We love the brood cow look that she has and the maternal characteristics that she possesses
- Sired by the national champion TW Fire N' Ice 104X and from a proven Angus female sired by GAR Predestined that has earned a 31 for milk, 91 for yearling weight and .72 for marbling
- This heifer is big time in terms of performance, her EPD profile and the complete package that she has

14

> OPEN ANGUS HEIFERS

PCF Predestined Eline 309

Angus Cow Polled/Black 309 AAA 17728504 10.24.13

G A R PREDESTINED B/R NEW DESIGN 036
G A R PREDESTINED T598 G A R EXT 4206
 G A R FUTURE DIRECTION 1804 C A FUTURE DIRECTION 5321
 G A R EXPECTATION 461
 ROSEWOOD APACHE 1084 LEACHMAN SAUGAHATCHEE 3000C
PCF APACHE ELINE 709 ROSEWOOD ERICA 8052
 VF 2092 ELINE 0077 OF 6002 WHITE OAK PRECISE 6002
 VF 0077 ELINE 9620G OF EXT

CED	BW	WW	YW	MA	CEM	SC	ST	DOC	CW	RE	YG	MS	\$MTI
8	1.6	49	77	25	10	-	-	-	25	0.38	+4.38	0.93	-

- One of the sale features is this young Angus open show heifer
- She is a daughter of GAR Predestined that will absolutely take your breathe away once you see her on sale day
- She is perfect in every way that you look at her. She is super sound from the ground up, flawless in her design and profile
- We so appreciate her design but just as much admire her breed leading set of EPD's. She has a 25 for milk, .38 for ribeye, .93 for marbling and 84.63 for SB
- Buy with confidence and enjoy the ride with this amazing young heifer. She will make a great show heifer and for sure will eventually be a top donor if you so desire



15

PCF Pred Zara Belle 312

Angus Cow Polled/Black 312 AAA 17728505 10.27.13

G A R PREDESTINED B/R NEW DESIGN 036
G A R PREDESTINED T598 G A R EXT 4206
 G A R FUTURE DIRECTION 1804 C A FUTURE DIRECTION 5321
 G A R EXPECTATION 461
 ROSEWOOD APACHE 1084 LEACHMAN SAUGAHATCHEE 3000C
PCF APACHE ZARA BELLE 708 ROSEWOOD ERICA 8052
 PCF ZARA BELLE 105 PRECISION G A R PRECISION 1680
 P C F ZARA BELLE EXT

CED	BW	WW	YW	MA	CEM	SC	ST	DOC	CW	RE	YG	MS	\$MTI
7	2.1	49	81	25	10	-	-	-	26	0.47	5.57	0.85	-
5	5	5	5	5	5	-	-	-	5	5	5	5	-

- Oh my goodness this is one terrific Angus female that will make you want to show cattle and then raise purebred Angus and/or Lim-Flex cattle
- She is a daughter of GAR Predestined that has a great set of EPD's with a highlighted .85 for marbling, 83.97 for \$B and 25 for milk
- This fancy, well made show heifer prospect offers an up to date and prominent pedigree along with breed leading numbers
- She is sound made, easy on the eye and very prominent in her stance



16

PCF Julie Pendleton 308

Angus Cow Polled/Black 308 AAA 17742344 10.02.13

HARB PENDLETON 765 J H S A V FINAL ANSWER 0035
PCF PENDLETON LEAD TIME 065 H A R B BLACK LADY 375 J H
 P C F FANNIE LEADTIME 220 CONNEALY LEADTIME
 SIPE CALIFORNIA 562
 WERNER RETAIL PRODUCT 1357 G A R RETAIL PRODUCT
PCF JULIE 922 APACHE WERNER KEM 115
 PCF JULIE RITA 3639 711 RITO 5FH9 OF RITA 3639 FD
 P C F JULIE APACHE 501

CED	BW	WW	YW	MA	CEM	SC	ST	DOC	CW	RE	YG	MS	\$MTI
8	1.3	53	90	29	11	-	-	-	-	-	-	-	-

- This well made purebred Angus female offers a lot for us to consider
- She is sired by PCF Pendleton Lead Time 065, a grandson of SAV Final Answer back to a daughter of Connealy Leadtime
- We admire the unique profile, straight lines and her strength in numbers
- She posts a 1.3 for birth, 90 for yearling weight and 29 for milk





17

PCF Objective Lassie 301

Angus Cow Polled/Black 301 AAA 17730163 09.29.13
 S S TRAVELER 6807 T510 D H D TRAVELER 6807
S S OBJECTIVE T510 0T26 S S MISS HI SPADE A114
 S S MISS RITA R011 7R8 S S RITO RITO R76 R011
 S S MISS ULTRESS U56
 CONNEALY IMPRESSION CONNEALY REFLECTION
WRICOLE 54 EXT LASSIE 384 PEARL PAMMY OF CONANGA 194
 WRICOLE TRAVELER LASSIE 054 B A R EXT TRAVELER 205
 WRICOLE DALLAS LASSIE 730

CED	BW	WW	YW	MA	CEM	SC	ST	DOC	CW	RE	YG	MS	\$MTI
10	0.9	58	96	30	8	-	-	-	-	-	-	-	-
5	5	5	5	5	5	-	-	-	-	-	-	-	-

- This September heifer calf is one that will you appreciate on sale day
- She is sired by SS Objective, the proven son of SS Traveler 6807
- Her dam is a daughter of Connealy Impression that continues to produce excellence for Panther Creek Farms
- This young heifer posts a .9 for birth, 96 for yearling weight and 30 for milk



18

PCF Final Zarabelle 303

Angus Cow Polled/Black 303 AAA 17730179 09.30.13
 CONNEALY PRODUCT 568 G A R RETAIL PRODUCT
CONNEALY FINAL PRODUCT PRIDE FINE OF CONANGA 566
 EBONISTA OF CONANGA 471 CONNEALY DEEP CANYON 454
 EBONISA OF CONANGA 5469
 SYDGEN C C & 7 S A F CONNECTION
PCE ZARABELLE 106 CC&7 SYDGEN FOREVER LADY 4087
 PCF APACHE ZARA BELLE 708 ROSEWOOD APACHE 1084
 PCF ZARA BELLE 105 PRECISION

CED	BW	WW	YW	MA	CEM	SC	ST	DOC	CW	RE	YG	MS	\$MTI
4	1.5	59	106	38	7	-	-	-	35	0.80	+6.51	+0.37	-
5	5	5	5	5	5	-	-	-	5	5	5	5	-

- What a brood cow in the making!
- Here is a daughter of Connealy Final Product back to a daughter of SydGen
- This long bodied, straight lined heifer is very appealing from the side profile and just has the brood cow look to her
- She offers a proven and very predictable pedigree with a strong set of EPD's
- This September coming yearling heifer posts a 59 for weaning weight, 106 for yearling weight and top milk number of 37
- She also offers a .37 for marbling, .80 for ribeye and 82.55 for SB



19

ELC Tiff A207

Angus Cow Polled/Black 207 AAA 17759849 12.30.13

SS OBJECTIVE T510 OT26 S S TRAVELER 6807 T510
RITO 7065 OF RITA 5M46 OBJ S S MISS RITA R011 7R8
 RITA 5M46 OF 2536 PRED G A R PREDESTINED
 G A R PRECISION 2536

BR MIDLAND TWIN VALLEY PRECISION E161
BRICTON TIFFANY 6207 BR ROYAL LASS 7036-19
 BRICTON TIFFANY 4080 B/R DESTINATION 727-928
 BOYD B/R RUBY OF TIFFANY1074

CED	BW	WW	YW	MA	CEM	SC	ST	DOC	CW	RE	YG	MS	SMTI
9	1.5	46	84	23	8	-	-	-	21	0.62	7.60	0.99	-
5	5	5	5	5	5	-	-	-	5	5	5	5	-

- Here is a future donor cow in the making. No matter whether you want to create purebred Angus or some of the breed's finest Lim-Flex then you might want to consider this young heifer
- She is not only very well made but she is extremely big numbered. She has posted a .99 for marbling and .60 for ribeye along with a 81.85 for \$B
- She is sired by a son of SS Objective and goes back to a daughter of BR Midland back to a daughter of B/R Destination



Lot 20
Reference>
 SBP
 PHANTASY
 6207

20

ELC Starbucks A356

Angus Cow Polled/Black 356 -- 12.23.13

SITZ UPWARD 307R CONNEALY ONWARD
EXAR UPSHOT 0562B SITZ HENRIETTA PRIDE 81M
 EXAR BARBARA T020 ISU IMAGING Q 9111

BR MIDLAND LCC MC HENRY BARBAR MG382
SBP PHANTASY 6207 TWIN VALLEY PRECISION E161
 SHOULDARBONE PHANTASY 128 BR ROYAL LASS 7036-19
 N BAR EMULATION EXT
 CIRCLE G PHANTASY 946

CED	BW	WW	YW	MA	CEM	SC	ST	DOC	CW	RE	YG	MS	SMTI
12	-2.1	57	160	37	3	-	-	3	4	-0.41	0.42	0.30	54

- Here is a fancy young show heifer prospect from the heart of the ELC Angus program
- She is a daughter of the performance sire EXAR Uprshot and from the leading ELC Angus donor SBP Phantasy 6207, a big time daughter of BR Midland that goes back to a daughter of N Bar Emulation EXT. She well made, super big footed and very sound structured donor cow that has a very prominent look to her
- This young heifer is big numbered, well bred and one of the top show heifer prospect from the ELC Angus division



Lot 20 >
 PVC STAR-
 BUCKS A356



AUTO RED ROSE,
FULL SIB TO LOT 21 EMBRYOS.



SIRE, EXLR REVIEW 753R

21

THREE Embryos

69% Lim-Flex Red Double Polled

EXLR REVIEW 7153R

SBLX UNKNOWN 104U

AUTO BLACK DAKOTA 129J
EXLR 199H
MYTTY IN FOCUS
MAGS MANUELA

CED	BW	WW	YW	MA	CEM	SC	ST	DOC	CW	RE	YG	MS	SMTI
10	0.2	50	93	33	5	0.7	18	20	28	0.10	0.28	0.37	50

- The double polled calves will be something special
- 2 full sibling heifers were recently top sellers in the Pinegar Limousin sale in March
- Sired by the red and homozygous polled purebred bull EXLR Review 7153R and from the \$35,000 valued donor SBLX Unknown 104U, the leading donor for Pinegar and Edwards Land & Cattle Co.
- We have no doubt that once these future calves hit the ground they will have instant value and credibility in the business



SIRE, MAGS USUAL SUSPECT



DAM, MAGS TAPESTRY

22

FOUR Embryos

75% Lim-Flex -- Double Polled

23

FOUR Embryos

75% Lim-Flex -- Double Polled

MAGS WL USUAL SUSPECT 538U

MAGS TAPESTRY

MAGS SASQUATCH
MAGS PHANTOMS PRIZE
MYTTY IN FOCUS
MAGS GRETCHEN 143L

CED	BW	WW	YW	MA	CEM	SC	ST	DOC	CW	RE	YG	MS	SMTI
8	2.1	50	95	25	5	0.4	8	12	24	0.14	0.16	0.21	51

- You can see for yourselves what these future calves might look like by turning to the bull section of this catalog and viewing ELCX 313Z. He is a big time herd sire prospect and one that you will appreciate on sale day
- Sired by the Triple Crown winning sire MAGS WLR Usual Suspect and from the leading Edwards donor MAGS Tapestry 2507T
- These calves will have a strong set of EPD's and the buyer will always have the right to brag about the lineage that they come from



SIRE, MAGS WINSTON



DAM, MAGS SATCHEL

24

FOUR Embryos

50% Lim-Flex -- Double Polled

MAGS WINSTON

MAGS SATCHEL

BT CROSSOVER 758N
MAGS STRAWBERRY
BR MIDLAND
MAGS LADY ACE

CED	BW	WW	YW	MA	CEM	SC	ST	DOC	CW	RE	YG	MS	SMTI
13	-0.7	47	94	23	6	0.3	7	12	34	-0.14	0.40	0.51	59

- These future calves are sired by the now deceased but ever popular MAGS Winston. He is the big numbered and high marbling son of BT Crossover that continue to amaze us with his breeding excellence around the country
- The dam of these calves are from MAGS Satchel, the big numbered and proven ELCX donor MAGS Satchel. She is a daughter of BR Midland and from the famed MAGS Lady Ace
- You can find in this sale catalog a full sib show heifer prospect to these embryos

25

FIVE Embryos

50% Lim-Flex Double Black Double Polled

26

FIVE Embryos

50% Lim-Flex Double Black Double Polled

EBFL YPSILANTI 420Y

TC ABERDEEN 759
MAGS RAMADA
LH RODEMASTER 338R
MAGS SAUNTER

MAGS UPPER SAUNTER

CED	BW	WW	YW	MA	CEM	SC	ST	DOC	CW	RE	YG	MS	\$MTI
9	0.5	56	107	36	4	0.7	-	15	53	0.08	0.42	0.39	58

27

SIX Embryos

50% Lim-Flex Double Black Double Polled

EBFL YPSILANTI 420Y

TC ABERDEEN 759
MAGS RAMADA
LH RODEMASTER 338R
MAGS SAUNTER

MINE PLD NET WORTH 8043U

CED	BW	WW	YW	MA	CEM	SC	ST	DOC	CW	RE	YG	MS	\$MTI
5	1.4	54	104	35	2	0.5	-	12	38	0.03	0.43	0.33	55

28

FIVE Embryos

PB Limousin Black Polled

LH RODEMASTER 338R
AVA JO DHVO 721R
EXLR EXCELLANTE 251L
CARROUSELS MAVIS 2214M

AUTO GUNN POINT 192Y

MAGS SARAFINA

CED	BW	WW	YW	MA	CEM	SC	ST	DOC	CW	RE	YG	MS	\$MTI
5	2.8	50	86	30	0	1.0	19	17	0.12	-0.07	0.00	45	
10	1.4	56	99	29	3	0.7	-	16	48	0.28	0.29	0.13	49

- Double black and homozygous polled
- These future calves are sired by the \$100,000 valued outcross sire EBFL Ypsilanti 420Y. His first calves are for sure something to brag about and we think you will be pleased once you see them in the show ring and the market place around the country
- We like this mating of Ypsilanti back to the dam of TW Fire N' Ice. He was the once national champion Lim-Flex in the breed and is now of the leading sires in the ELCX program



SIRE, EBFL YPSILANTI 420Y



SON, TW FIRE N ICE

- My goodness these future calves are going to really be something to the new owner. They are sired by the leading outcross and highly syndicated outcross sire EBFL Ypsilanti 420Y. He is the son of TC Aberdeen from the national champion MAGS Ramada. His first calves are very sound made, stylish and very easy in their condition
- The dam of these embryos is one amazing donor in the ELCX program. She is a daughter a SAV Net Worth and is made about good as you would ever want one made
- Buy the embryos with extreme confidence and rest assured they are going to be impressive when you get them on the ground



SIRE, EBFL YPSILANTI 420Y



DAM, MINE PLD NET WORTH 8043U

- These future calves represent an exciting mating that are sure to impress any program
- They are sired by the 75% Lim-Flex son of LH Rodemaster 338R and from a full sister to the once national champion sire DHVO Deuce, AUTO Gunn Point 192Y working in the Pinegar program
- Their dam is the popular purebred donor MAGS Sarafina that is the lead purebred for the Edwards Land & Cattle Co. program
- Buy with confidence because we can promise you these future calves are really going to be something



SIRE, AUTO GUNN POINT 192Y



DAM, MAGS SARAFINA



SIRE, EXAR UPSHOT 0562B



DAM, PAF 1160 MIDLAND 330

29

FIVE Embryos

PB Angus Black Polled

EXAR UPSHOT 0562B

SITZ UPWARD 307R
EXAR BARBARA T020
BR MIDLAND
PAF 9581 616 EXT 9581

PAF 1160 MIDLAND 330

CED	BW	WW	YW	MA	CEM	SC	ST	DOC	CW	RE	YG	MS	SMTI
13	-1.4	55	118	35	3	-	-	3	7	-0.38	0.39	0.28	54

- Here are some well bred purebred Angus embryos
- They are the leading ELC Angus donor PAF 1160 Midland 330, the dam of the \$9900 valued female that topped the '12 Ft. Worth Cowtown Classic sale sired by AUTO American Idol
- These future calves are sired by the breed leading sire EXAR Upshot 0562B. He has a 1.31 for REA, .59 for marbling. He also has earned a 35 for milk and 114 for yearling weight



SIRE, EXAR UPSHOT 0562B



DAM, SHAMROCKS JULIA 014P

30

FIVE Embryos

PB Angus Black Polled

EXAR UPSHOT 0562B

SITZ UPWARD 307R
EXAR BARBARA T020
BR MIDLAND
SAR NEW DESIGN 036 8311

SHAMROCKS JULIA 014P

CED	BW	WW	YW	MA	CEM	SC	ST	DOC	CW	RE	YG	MS	SMTI
13	-2.5	48	103	36	3	0.2	-	3	-2	-0.44	0.37	0.30	53

- Sired by the carcass king EXAR Upshot 0562B are these future calves
- EXAR Upshot is huge numbered with a 1.06 for scrotal, .59 for marbling, 1.31 for ribeye and 113.51 for \$B
- His calves have prove themselves in the market place and we are certain these future calves will have tremendous value
- They are from an ELC donor Shamrocks Julia, a daughter of BR Midland that has earned a .72 for marbling

31

FOUR Embryos

PB Angus Black Polled



32

TW Delight 2920Y

Lim-Flex (25) Cow HP/HB BTCW 2920Y LFF 2002847 02.23.11

C F RIGHT DESIGN 1802
SUMMITCREST COMPLETE 1P55
 SUMMITCREST ELBA 1M17

BR MIDLAND
MAGS SANDBOX
 MAGS LADY ACE

BON VIEW NEW DESIGN 1407
 VISION HF BLACKCAP 0015
 VERMILION DATELINE 7078
 SUMMITCREST ELBA 1F43
 TWIN VALLEY PRECISIONE161
 BR ROYAL LASS 7036-19
 EXLR INTRIGUE 361G
 CHAZ MISS GRETA 7003G

CED	BW	WW	YW	MA	CEM	SC	ST	DOC	CW	RE	YG	MS	\$MTI
11	0.5	53	104	37	4	-	-	-	40	-0.11	0.49	0.49	60
P	P	P	P	P	P	-	-	-	P	P	P	P	

32A

ELCX Orinal 920A

Lim-Flex (31) Bull HP/HB ELCX 920A LFM 2046612 10.05.13

AUTO WILL POWER 160X
TW DELIGHT 2620Y

G A R PREDESTINED
 AUTO REBECA 292S
 SUMMITCREST COMPLETE 1P155C
 MAGS SANDBOX

CED	BW	WW	YW	MA	CEM	SC	ST	DOC	CW	RE	YG	MS	\$MTI
10	0.4	51	102	34	3	-	-	-	29	-0.10	0.42	0.50	60
P	P	P	P	P	P	-	-	-	P	P	P	P	

33

YRTX Whirlwind 906W

Lim-Flex (50) Cow Polled/Black YRTX 906W LFF 1952494 11.02.09

G 13 STRUCTURE
LAGRAND MAF ANTIDOTE 5775
 MAPLE LANE FOREVER LADY 2

LA COMMANDER
JELU CO CO
 DCLE COCO BELLE

TC STOCKMAN 365
 G 13 TRAVELER 9428
 SS TRAVELER 6807 T510
 S V F FOREVER LADY 1120
 COLORADO 150
 LL QUEEN FOR A DAY
 WULF'S POWER DRIVE 9193B
 EXLR CABANA 025C

CED	BW	WW	YW	MA	CEM	SC	ST	DOC	CW	RE	YG	MS	\$MTI
7	5.1	52	94	38	4	0.1	-	-	3	-0.28	0.27	0.21	51
25	34	22	15	21	23	2	-	-	P	P	P	P	

33A

ELCX Cash 906 A

Lim-Flex (75) Bull DP/DB ELCX 906A LFM 2046613 09.22.13

BOHI TOP DOLLAR 7144T
YRTX WHIRLWIND 906W

AUTO DOLLAR GENERAL 122R
 CARROUSELS PINA COLADA
 LAGRAND MAF ANTIDOTE 5775
 JELU CO CO

CED	BW	WW	YW	MA	CEM	SC	ST	DOC	CW	RE	YG	MS	\$MTI
8	4.6	54	98	35	6	0.5	-	-	14	0.02	0.15	0.19	52
P	P	P	P	P	P	P	-	-	P	P	P	P	

- A.I. 11.25.13 AUTO Grand Am 156Y; P.E. 12.04.13 to 3.01.14 to AUTO Will Power 160X
- Here is one of the features of the entire sale and a future donor cow in the making
- She is a 50% Lim-Flex daughter of Summitcrest Complete 1P55 and from the breed leading donor for Sugar Bush Cattle, Inc., MAGS Sandbox. She is a proven daughter of BR Midland from the famed MAGS Lady Ace
- This young female is now starting in her production and is a big time 25% Lim-Flex
- She posts a low birth of 0.5, yearling weight of 105, milk of 37 and marbling of .49
- She is homozygous polled, homozygous black and sells bred to either AUTO Grand Am or AUTO Will Power 160X



Lot 32 > TW DELIGHT 2920Y



Lot 32A > ELCX ORINAL 920A

- A.I. 11.25.13 to EXLR Review 7153R; P.E. 12.04.13 to 3.01.14 to AUTO Will Power 160X
- This 50% Lim-Flex black and polled has done a tremendous job with raising her young bull calf
- The female has earned a 38 for milk and .21 for marbling
- She offers a complete outcross pedigree to most established cattle in the black and polled lines
- She is a very maternal and productive female that we know you will appreciate on sale day



Lot 33 > YRTX WHIRLWIND 906W



Lot 34 > RITA 9MA1 OF RIT 7O67 PRED

34

Rita 9MA1 of Rita 7O67 Pred

Angus Cow Black/Polled 9MA1 AAA +16408415 09.14.09
 B/R NEW DESIGN 036 V D A R NEW TREND 315
G A R PREDESTINED B/R BLACKCAP EMPRESS 76
 G A R EXT 4206 G A R 6807 TRAVELER 1432
 S S OBJECTIVE T510 OT26 S S TRAVELER 6807 T510
RITA 7O67 OF RITA 5M46 OBJ S S MISS RITA R011 7R8
 RITA 5M46 OF 2536 PRED G A R PREDESTINED
 G A R PRECISION 2536

CED	BW	WW	YW	MA	CEM	SC	ST	DOC	CW	RE	YG	MS	SMTI
7	2.1	57	98	29	11	0.23	-	8	28	0.71	3.72	1.38	-
29	31	27	26	26	23	5	-	5	25	32	28	29	-

- Here is one premier Angus donor cow in the making!
- She posts a breed leading marbling number of 1.38 and ribeye number of .71
- She has a \$B of 96.37, 98 for yearling weight and 29 for milking ability
- This brood cow is very maternal and is doing a top job with her young 37.5% Lim-Flex heifer that will sell along with her
- This young pair has their entire future in front of them and we are certain will highlight any purebred Angus or Lim-Flex program in the country

34A

ELCX Bonnie 1B

Lim-Flex (37.5) Cow HP/DB ELCX 1B -- 01.28.14
 TW FIRE N' ICE BOHI TITELIST 7050T
 MAGS UPPER SAUNTER
RITA 9MA1 OF RITA 7O67 PRED G A R PREDESTINED
 RITA 7O67 OF RITA 5M46 OBJ

CED	BW	WW	YW	MA	CEM	SC	ST	DOC	CW	RE	YG	MS	SMTI
7	2.1	57	98	29	11	0.23	-	8	28	0.71	1.38	0.05	-
12	1.4	56	106	34	8	0.7	-	23	57	0.46	0.29	0.20	52



REFERENCE > AUTO WILL POWER 160X

35

ELCX Reba 89Z

Lim-Flex (75) Cow DP/DB ELCX 89Z LFF 2032501 04.21.12
 BR MIDLAND TWIN VALLEY PRECISIONE161
MAGS SCOTLAND BR ROYAL LASS 7036-19
 MAGS MARQUEE EXLR DAKOTA 353G
 MAGS JEWEL
 ANDERS JAG GREENWOODPOLLED455ROCKET
GPF EXTRA BLAQUE EVE ANDERS GEMINI
 GPF EXTRA SWEET ELITE LKCC TOMAHAWKS TOUCHDOWN
 HC EXTRAORDINARY HCR 61X

CED	BW	WW	YW	MA	CEM	SC	ST	DOC	CW	RE	YG	MS	SMTI
3	3.7	50	85	18	0	0.4	-	2	10	0.07	0.17	0.13	48
21	30	27	16	17	20	10	-	P	P	P	P	P	

- P.E. 5.21.13 to 8.10.13 to AUTO Will Power 160X
- This 75% Lim-Flex first calf heifer is sired by the once national top selling bull MAGS Scotland
- She is very well made, youthful and prominent in her profile. She is very long and clean up through her front end, straight down her top line and very structurally sound
- Her future calf sired by the powerful Lim-Flex sire AUTO Will Power 160X will be a great bonus for the buyer of this wonderful bred heifer

36

ELCX Sail Away 120 Z

Lim-Flex (38) Cow DP/HB DPBN 120Z LFF 2046387 03.21.12
 BT CROSSOVER 758N C A FUTURE DIRECTION 5321
MAGS WINSTON BT ROYAL PRIDE 237G
 MAGS STRAWBERRY EXLR NEW GENERATION 071M
 MAGS FRUITFUL 487M
 DEERVALLEYDIRECTION S6118 C A FUTURE DIRECTION 5321
DPBN SARAH 124 X E F RITA 0221
 DVFC NELLY 124N MAGS JUMANJI
 FC#20594

CED	BW	WW	YW	MA	CEM	SC	ST	DOC	CW	RE	YG	MS	SMTI
12	-0.4	42	87	29	3	-	-	-	42	-0.35	0.52	0.63	61
P	P	P	P	P	P	-	-	-	P	P	P	P	

- Double polled and double black
- Here is a big numbered 37.5% Lim-Flex heifer and a known daughter of MAGS Winston
- Her dam is a daughter of Deer Valley Direction S6118 back to the big numbered bull MAGS Jumanji
- This female has a -0.9 for birth, 29 for milk and a breed leading marbling number of .63
- We really appreciate the prominent pedigree, the extreme EPD's and the over all look of this female

37

EF 101Z

Lim-Flex (50) Cow DP/DB ETHR 101Z LFF 2002361 01.01.12
 D A TRAVELER 004 703 S A V 8180 TRAVELER 004
EF XCESSIVE FORCE ROSEWOOD ERICA 5010
 CFLX MOLLYS IMAGE DHVO DEUCE 132R
 JCL PEPPERMINT
 TOP LINE 0517 OAR NORTHERN LEGEND 0143
EF 801W TOP LINE BLACKBIRD 0202
 EF CLEAR SAILING 362R EXLR NEW GENERATION 071M
 EXLR 231J

CED	BW	WW	YW	MA	CEM	SC	ST	DOC	CW	RE	YG	MS	\$MTI
13	-1.6	42	87	32	3	-	-	-	31	-0.28	0.43	0.23	48
12	30	19	9	6	10	-	-	-	P	P	P	P	

- PE. 5.12.13 to 8.10.13 to AUTO Will Power 160X
- This young female is sired by the once national champion bull EF Xcessive Force that seems to be doing an outstanding job around the country with a highlight son being named the 2014 National Champion Lim-Flex bull for Rachel Booth and Etherton Farms
- She is from a 50% Lim-Flex daughter sired by the Angus sire Top Line and from a daughter of the once national champion sire EXLR New Generation 071M
- She posts a -1.6 for birth, 32 for milk and .23 for marbling
- This female is very feminine up through her front end, gorgeous from her side profile



38

ELCX Zemmie 507Z

Lim-Flex (50) Cow DP/DB ELCX 507Z LFF 2046495 02.18.12
 BT CROSSOVER 758N C A FUTURE DIRECTION 5321
MAGS WINSTON BT ROYAL PRIDE 237G
 MAGS STRAWBERRY EXLR NEW GENERATION 071M
 MAGS FRUITFUL 487M
 MYTTY IN FOCUS S A F FOCUS OF E R
MAGS TAPESTRY MYTTY COUNTESS 906
 MAGS GRETCHEN 143L EXLR DAKOTA 353G
 MAGS GRETCHEN

CED	BW	WW	YW	MA	CEM	SC	ST	DOC	CW	RE	YG	MS	\$MTI
13	-1.8	48	98	24	5	0.2	-	17	41	-0.32	0.51	0.54	60
P	P+	P	P	P	P	P	-	P	P	P	P	P	

- PE. 5.12.13 to 8.10.13 to AUTO Will Power 160X
- This 50% Lim-Flex female is bred to be an overachiever
- She is sired by the now deceased but breed leading MAGS Winston. He is the big numbered son of BT Crossover 758N from the elite donor MAGS Strawberry
- Her dam is the leading Edwards donor MAGS Tapestry, a proven daughter of MYTTY In Focus from the famed MAGS Gretchen 143L
- She posts a -1.8 for birth, 98 for yearling weight, 24 for milk and .54 for marbling. She also has a 60 for MTI



39

ELCX Zing 071Z

Lim-Flex (50) Cow DP/DB ELCX 071Z LFF 2008566 03.21.12
 BT CROSSOVER 758N C A FUTURE DIRECTION 5321
MAGS WINSTON BT ROYAL PRIDE 237G
 MAGS STRAWBERRY EXLR NEW GENERATION 071M
 MAGS FRUITFUL 487M
 G A R PREDESTINED B/R NEW DESIGN 036
PBRS XCEPTIONAL 071X G A R EXT 4206
 WLR RENDEZVOUS 050R GPFF BLAQUE RULON
 KEHG JULIET 10H

CED	BW	WW	YW	MA	CEM	SC	ST	DOC	CW	RE	YG	MS	\$MTI
11	0.0	48	98	24	5	-0.2	-	12	36	-0.11	0.40	0.51	60
P	30	28	19	14	P	15	-	P	P	P	P	P	

- PE. 5.12.13 to 8.10.13 to AUTO Will Power 160X
- Here is a big numbered 50% Lim-Flex brood cow in the making
- She is a 50% Lim-Flex daughter of MAGS Winston that offers a low birth of 0.0, yearling weight of 98, milk of 24 and .51 for marbling
- Her dam is the leading donor for Twin Willows Farm and Edwards Land & Cattle Co., PBRS Xceptional 071X. She is a full sister to the PBRS Wagon Wheel, the leading donor for P Bar S Ranch, Sand Springs, OK. 071X is a daughter of GAR Predestined and from the PBRS big time donor WLR Rendezvous 050R
- This young first calf heifer offers a breed leading EPD profile, prominent and progressive pedigree that will give any buyer the confidence to make this investment into the future





40

JWM Mandi 144Y

Lim-Flex (50) Cow Polled/DB JLWM 144Y LFF 2035598 09.14.11
 S A F FOCUS OF E R S A F FAME
MYTTY IN FOCUS G D A R FOREVER LADY 246
 MYTTY COUNTESS 906 SITZ ALLIANCE 6595
 BALDRIDGE COUNTESS 357
 COLE WULF HUNT COLE FIRST DOWN 46D
JLWM BLACK PEPPER 9127W COLE CATALINA 3309C
 WBBK RED PEPPER 2009M SLDJ POLLED EQUITY
 LKAS 0099K

CED	BW	WW	YW	MA	CEM	SC	ST	DOC	CW	RE	YG	MS	\$MTI
12	-0.4	55	103	34	4	0.5	16	28	31	-0.05	0.36	0.35	56
21	33	23	20	20	21	P	P	P	P	P	P	P	

- P.E. 6.02.13 to 8.15.13 to TGBC Westwind 221Y
- This polled, double black 50% Lim-Flex female is one of the featured females of the sale offering. She is a daughter of MYTTY In Focus and back to a daughter of COLE WULF Hunt back to SLDJ Polled Equity
- This female offers a low birth of -0.4, yearling weight of 103, milk of 34 and marbling of .35
- 144Y is very angular up through her front end, strong down her top line and very clean in her lines
- She sells bred to the 75% Lim-Flex son of AHCC Westwind W544 that is homozygous polled and homozygous black and from the big league donor LH Radiant 323R



41

ELCX Honey 257Z

Lim-Flex (75) Cow DP/DB ELCX 257Z LFF 2013081 03.02.12
 GPFF BLAQUE RULON BLACK DIAMOND
CARROUSELS PITCH BLAQUE QUAIL RUN RAMONA BP
 SFKL POLLED PRECEDENT WULFS RAMBLER 8400X
 SFKL POLLED PARADIGM 448D
 MAGS RUSHMORE GPFF BLAQUE RULON
MAGS TALCUM POWDER TWIN EAGLES JESTRESS 150K
 MAGS ROCK POWDER EXAR NEW DESIGN 2997
 MAGS MESSY POWDER 263M

CED	BW	WW	YW	MA	CEM	SC	ST	DOC	CW	RE	YG	MS	\$MTI
9	-0.2	34	72	17	1	0.3	-	-	4	0.17	0.06	0.13	44
P	30	23	10	10	P	8	-	-	P	P	P	P	

- P.E. 5.12.13 to 8.10.13 to AUTO Will Power 160X
- This 75% Lim-Flex heifer is sired by the son of GPFF Blaue Rulon, Carrosuels Pitch Blaue and from a daughter of MAGS Rushmore back to a daughter of EXAR New Design 2997
- This female sells bred carrying the service to the big numbered Lim-Flex sire AUTO Will Power 160X. He is the 37.5% Lim-Flex \$35,000 half interest sire for Edwards Land & Cattle and owned with Pinegar Limousin. He is a son of GAR Predes-tined from the famed donor AUTO Rebeca 292S



42

ELCX Trina 239Z

Lim-Flex (75) Cow HP/Black ELCX 239Z LFF 2012140 01.20.12
 WULFS REALTOR 1503R HUNT MR JOCK 44J
WULFS TITUS 2149T WULFS LENA 1503L
 WULFS MEADOW GRASS 2149M WULFS GOLIATH 2453G
 MISS WULFETTE 9062J
 TWIN VALLEY PRECISIONE161
 BR MIDLAND BR ROYAL LASS 7036-19
MAGS SACHEL EXLR INTRIGUE 361G
 MAGS LADY ACE CHAZ MISS GRETA 7003G

CED	BW	WW	YW	MA	CEM	SC	ST	DOC	CW	RE	YG	MS	\$MTI
7	1.7	53	97	21	4	1.0	-	16	32	0.46	0.05	0.15	51
P	P	P	P	P	P	P	-	P	P	P	P	P	

- P.E. 5.21.13 to 8.10.13 to AUTO Will Power 160X
- Black and homozygous polled
- Sired by the outcross sire Wulf's Titus 2149T is this young first calf heifer
- Her dam is the leading donor MAGS Satchel that is one of the premier donors for Edwards Land & Cattle Co.. She is a daughter of BR Midland from the MAGS Lady Ace
- This heifer is solid in her EPD profile, well bred and sells carrying the service the homozygous polled, homozygous black son of GAR Predes-tined

REFERENCE > MAGS SACHEL

43

ELCX Google 958Z

Lim-Flex (50) Cow DP/DB ELCX 958Z LFF 2032522 01.20.12
 C A FUTURE DIRECTION 5321 GAR PRECISION 1680
DEERVALLEYDIRECTION S6118 C A MISS POWER FIX 308
 E F RITA 0221 B/R NEW DESIGN 036
 G A R PRECISION 2168
 CRSL 5064R WULFS FANFARE 4055F
ELCX WAITING 958W MINE SOUTHERN DOLL 1154L
 AUTO BLACK RAMONA 01N GPFF BLAQUE RULON
 STOJ AFTER DARK

CED	BW	WW	YW	MA	CEM	SC	ST	DOC	CW	RE	YG	MS	SMTI
9	-1.0	37	74	36	3	0.3	-	-	21	-0.15	0.35	0.52	57
P	26	14	9	10	P	P	-	-	P	P	P	P	

- P.E. 5.21.13 to 8.10.13 to AUTO Will Power 160X
- Here is a 50% Lim-Flex daughter of Deer Valley Direction S6118, the leading Angus now working for
- This young female offers a low birth of -1.0 for birth, 36 for milking ability and .52 for marbling
- This first calf heifer is moderate in her frame score, easy in her condition and very appealing from the side profile
- Her mating to the GAR Predestined son AUTO Will Power 160X makes it very enticing for the buyer

44

ELCX Sea Breeze 067Z

Lim-Flex (63) Cow HP/DB ETHR 067Z LFF 2013083 03.15.12
 GPFF BLAQUE RULON BLACK DIAMOND
CARROUSELS PITCH BLAQUE QUAIL RUN RAMONA BP
 SFKL POLLED PRECEDENT WULFS RAMBLER 8400X
 SFKL POLLED PARADIGM 448D
 MYTTY IN FOCUS S A F FOCUS OF E R
FLLR TRUFFLES MYTTY COUNTESS 906
 DIAMOND ROSE R067 TNUH BLUE PRINT 245H

CED	BW	WW	YW	MA	CEM	SC	ST	DOC	CW	RE	YG	MS	SMTI
8	-0.8	39	80	24	1	0.6	-	-	13	0.27	0.06	0.10	45
14	32	24	12	12	13	10	-	-	P	P	P	P	

- P.E. 5.21.13 to 8.10.13 to AUTO Will Power 160X
- Double black and homozygous polled
- Here is a great brood cow in the making!
- This 62.5% Lim-Flex Carrouseles Pitch Blaque daughter is from a leading donor at Edwards, FLLR Truffles. She is a 50% Lim-Flex daughter of MYTTY In Focus back to a TNUH Blue Print daughter
- This heifer sells bred to the big numbered AUTO Will Power 160X. He has earned a 0.2 for birth, 99 for yearling, 31 for milk and .51 for marbling so this heifers first calf will have strength in numbers and a very well balanced pedigree

46

KBHC Zane 923Z

Lim-Flex (75) Cow DP/DB KBHC 923Z LFF 2046496 02.22.12
 BR MIDLAND TWIN VALLEY PRECISIONE161
 JCL MADELINDEN BR ROYAL LASS 7036-19
 MAGS MARQUEE EXLR DAKOTA 353G
 MAGS JEWEL
 MNWS FRONTIER 507R GPFF BLAQUE RULON
DPBN IN THE BANK 923T WELZ MACY 203M
 JCL MADELINDEN JCL LODESTAR 27L
 JCL MADELINDEN JCL MADELINE

CED	BW	WW	YW	MA	CEM	SC	ST	DOC	CW	RE	YG	MS	SMTI
6	1.7	47	85	22	3	0.4	-	11	16	0.12	0.17	0.13	47
P	P	P	P	P	P	P	-	P	P	P	P	P	

- P.E. 5.21.13 to 8.10.13 to AUTO Will Power 160X
- Double polled and double black
- Sired by the once national champion Lim-Flex and highly syndicated sire MAGS Scotland
- From a daughter of the syndicated sire MNWS Frontier 507R back to a daughter of JCL Lodestar 27L
- This first calf heifer sells bred to the \$35,000 valued half interest sire AUTO Will Power 160X

47

TW Dazle 16Y

Lim-Flex (69) Cow DP/DB BTCW 16Y LFF 2006618 11.15.11
 G A R PREDESTINED B/R NEW DESIGN 036
MAGS TEDDIE G A R EXT 4206
 EXLR 199H WULFS FANFARE 4055F
 EXLR 558F
 JCL 73J HUNTS HI-LITER 245G
BBPB PENNY 185B 545P JCLC 32G
 CBLR MS PENNY POWER 185B POLLED POWER BUIT 8V
 CBLR PENNY 107U

CED	BW	WW	YW	MA	CEM	SC	ST	DOC	CW	RE	YG	MS	SMTI
8	-1.3	33	69	27	2	0.1	-	-	16	0.11	0.10	0.23	47
P	32	24	11	11	P	7	-	-	P	P	P	P	

- P.E. 5.23.13 to 8.15.13 to Springfield Complete 1084 (Angus)
- Double polled and double black is this young female
- Her sire MAGS Teddie is the leading son of GAR Predestined and from the \$50,000 valued donor for Magness, EXLR 199H. He is a senior herd sire for the ELCX program and is extreme in his number package and one of the well bred bulls in the business
- This young female offers a low birth of -1.3, milk of 27 and marbling of .23
- She sells bred to the Angus sire Springfield Complete 1084

45

ELCX Abberation 240Z

Lim-Flex (50) Cow HP/DB ELCX 240Z LFF 2012128 01.20.12
 S S OBJECTIVE T510 0T26 SS TRAVELER 6807 T510
WHITESTONE ADVOCATE S S MISS RITA R011 7R8
 SINCLAIR LADY 2P61 4465 D H D TRAVELER 6807
 E E 4286 OF IDEAL22401254
 CHAZ FIRST CHOICE 6004F COLE FIRST DOWN 46D
DEDO HIGH HOPES 012H CHAZ MISS ROXANNE 92C
 DVFC DREAM FANTASY 902E JCL BLACK OUT
 YKCC BRIGHTLY POISED 285X

CED	BW	WW	YW	MA	CEM	SC	ST	DOC	CW	RE	YG	MS	SMTI
-	-0.5	47	84	25	-	-	-	-	23	23.5	-	0.55	0
-	P	P	P	P	-	-	-	-	P	P	P	P	

- P.E. 5.21.13 to 8.10.13 to AUTO Will Power 160X
- Homozygous polled and homozygous black
- This first calf heifer was created as a result of blending the best with the best
- She is sired by the Angus sire Whitestone Advocate and from the leading purebred Limousin donor for the ELCX program, DEDO High Hopes 012H
- This heifer has a low birth of -0.5 and milk of a 25
- She is moderate in her frame score and very easy in her condition

48

ELCX Serena 807Z

Lim-Flex (53) Cow DP/DB ELCX 807Z LFF 2030908 03.20.12
 G A R PREDESTINED B/R NEW DESIGN 036
MAGS TEDDIE G A R EXT 4206
 EXLR 199H WULFS FANFARE 4055F
 EXLR 558F
 BOHI TITLELIST 7050T AUTO DOLLAR GENERAL 122R
TW SERENA 110X CARROUSELS PINA COLADA
 MAGS ULTRAVIOLET PAINT G A R PREDESTINED
 MAGS PAINT JOB 506P

CED	BW	WW	YW	MA	CEM	SC	ST	DOC	CW	RE	YG	MS	SMTI
12	-1.8	39	85	36	5	0.5	-	9	17	-0.10	0.25	0.39	54
13	32	22	15	10	12	6	-	P	P	P	P	P	

- P.E. 5.23.13 to 8.15.13 to Springfield Complete 1084 (Angus)
- Double polled and double black
- Here is a MAGS Teddie daughter that is strong in her numbers and very appealing in her profile
- She is very easy in her condition and seems to be easy to maintain
- Her dam is a daughter of BOHI Titlelist 7050T, the leading purebred sire for Massey Limousin, London, KY
- This 52.8% Lim-Flex female sells bred to calve around sale time to the top Angus sire Springfield Complete 1084
- We appreciate this heifers low birth of -1.8, milk of 36 and marbling of .39

49

ELCX Yesterday 768 Z

Lim-Flex (44) Cow DP/HB ELCX 768Z LFF 2033969 02.10.12
 G A R PREDESTINED B/R NEW DESIGN 036v
MAGS UTLEY G A R EXT 4206
 EXLR 199H WULFS FANFARE 4055F
 EXLR 558F
 BC 7022 RAVEN 7965 B C MARATHON 7022
HAHK WELDA 768W O C C BLACKBIRD 796F
 MAGS SARAFINA EXLR EXCELLANTE 251L
 CARROUSELS MAVIS 2214M

CED	BW	WW	YW	MA	CEM	SC	ST	DOC	CW	RE	YG	MS	\$MTI
7	1.9	50	97	31	3	0.4	-	11	28	-0.11	0.37	0.41	57
P	30	19	13	11	P	P	-	P	P	P	P	P	

- P.E. 5.23.13 to 8.15.13 to Springfield Complete 1084 (Angus)
- Homozygous black and double polled
- This 43.5% Lim-Flex first calf heifer has a breed leading pedigree and top set of EPD's
- She is sired by MAGS Utley, the leading GAR Predestined son from EXLR 199H, the leading sire for Hayhook Limousin, Lexington, KY. He is big numbered with a 0 for birth, 94 for yearling weight, 36 for milk and .52 for marbling
- This young female is from a daughter of BC 7022 Raven 7965 from the ELCX donor MAGS Sarafina

52

ELCX Pixar 814Z

Lim-Flex (50) Cow HP/HB ELCX 814Z LFF -- 03.03.12
 JCL LODESTAR 27L HUNTS HI-LITER 245G
LH RODEMASTER 338R LOGAN'S CHEERLEADER 280G
 VERMILION E BLACKBIRD9546 VERMILION 31 STACLER 3491
 CH ENV BLACKBIRD C5941
 MINE POLLED DRYDOCK 004H WULFS QUARTERBACK 4222B
MINE PLD CAPTIVE 2370M CANE RIDGE SOUTHERN TIMES
 DKL LASSIE GAL 8064 OCC DISCOVERY 918D
 DKL GARNET GAL 3165

CED	BW	WW	YW	MA	CEM	SC	ST	DOC	CW	RE	YG	MS	\$MTI
12	0.4	48	94	24	6	0.4	3	8	33	-0.14	0.48	0.26	50

- P.E. 5.23.13 to 8.15.13 to Springfield Complete 1084 (Angus)
- Homozygous polled and homozygous black
- Here is a daughter of LH Rodemaster 338R, the breed leading 50% Lim-Flex son of JCL Lodestar 27L that has definitely proven himself these last couple of years with performance leaders and top sellers around the country
- Her dam is a proven donor for Twin Willow Farms and is sired by MINE Polled Drydock
- She sells bred to the Springfield Complete Angus sire for a 25% Lim-Flex calf

50

ELCX Icee 809Z

Lim-Flex (63) Cow DP/DB ETHR 809Z LFF 2030909 03.22.12
 BOHI TITELIST 7050T AUTO DOLLAR GENERAL 122R
TW FIRE N' ICE CARROUSELS PINA COLADA
 MAGS UPPER SAUNTER LH RODEMASTER 338R
 MAGS SAUNTER
 MEADO-WEST 222M VERMILION DATELINE 7078
 C L F MISS FANTASIA 9891
 CHAZ FIRST CHOICE 6004F MEADO-WEST PASHIMA X414P
MEADO-WEST DAPHNE MEADO-WEST 944J

CED	BW	WW	YW	MA	CEM	SC	ST	DOC	CW	RE	YG	MS	\$MTI
7	1.0	49	93	28	4	0.3	-	17	39	0.03	0.34	0.21	49
11	32	22	13	8	10	4	-	P	P	P	P	P	

- P.E. 5.23.13 to 8.15.13 to Springfield Complete 1084 (Angus)
- Double polled and double black
- This 62.5% Lim-Flex female is solid in her make up and design
- She is very straight in her lines, level and square out of her rump and very sound in her structure
- Her sire TW Fire N' Ice is the once national champion Lim-Flex sire and has done a tremendous job in production added pounds and performance to his offspring
- She has a 1.0 for birth, 93 for yearling weight, 28 for milk and .21 for marbling

53

ELCX Tweet 801Z

Lim-Flex (50) Cow HP/DB ETHR 801Z LFF -- 03.02.12
 JCL LODESTAR 27L HUNTS HI-LITER 245G
LH RODEMASTER 338R LOGAN'S CHEERLEADER 280G
 VERMILION E BLACKBIRD9546 VERMILION 31 STACLER 3491
 CH ENV BLACKBIRD C5941
 MINE POLLED DRYDOCK 004H WULFS QUARTERBACK 4222B
MINE PLD CAPTIVE 2370M CANE RIDGE SOUTHERN TIMES
 DKL LASSIE GAL 8064 OCC DISCOVERY 918D
 DKL GARNET GAL 3165

CED	BW	WW	YW	MA	CEM	SC	ST	DOC	CW	RE	YG	MS	\$MTI
12	0.4	48	94	24	6	0.4	3	8	33	-0.14	0.48	0.26	50

- P.E. 5.23.13 to 8.15.13 to Springfield Complete 1084 (Angus)
- Homozygous polled and homozygous black
- This young female is very well made and has a tremendous of rib shape and volume to her
- She is sired by the leading LH Rodemaster 338R bull and this young female is a result of the blending of two 50% Lim-Flex
- She sells bred and will calve close to sale time for what we imagine to be a very appealing calf that will be big numbered

51

ELCX Utility 723 Z

Lim-Flex (31) Cow DP/DB ELCX 723Z LFF 2032517 02.22.12
 G A R PREDESTINED B/R NEW DESIGN 036
MAGS UTLEY G A R EXT 4206
 EXLR 199H WULFS FANFARE 4055F
 EXLR 558F
 BC 7022 RAVEN 7965 B C MARATHON 7022
HAHK WOOSH 723W O C C BLACKBIRD 796F
 EXLR SHOWCASE 272R EXAR NEW LOOK 2971
 EXLR SHOWCASE 592N

CED	BW	WW	YW	MA	CEM	SC	ST	DOC	CW	RE	YG	MS	\$MTI
8	0.0	43	92	29	4	0.1	-	7	29	-0.16	0.46	0.48	57
P	P	P	P	P	P	P	-	P	P	P	P	P	

- P.E. 5.23.13 to 8.15.13 to Springfield Complete 1084 (Angus)
- Double polled and double black
- Here is a 31% Lim-Flex female that is big numbered, bred well and represents genetics that have been tried and proven in our breed
- She is a daughter of MAGS Utley, the leading sire for Hayhook Limousin, Lexington, OK and a son of GAR Predestined
- Her dam is the daughter of BC 7022 Raven 7965 back to a daughter of EXAR New Look
- This female offers a low birth of 0, yearling weight of 92, milk of 29 and marbling of .48

54

ELCX Priority 815Z

Lim-Flex (50) Cow HP/HB ELCX 815Z LFF -- 03.21.12
 AUTO DOLLAR GENERAL 122R LVLS SECRET WEAPON 4408K
BOHI TOP DOLLAR 7144T AUTO KYRIA 232K
 CARROUSELS PINA COLADA AUTO BLACK DAKOTA 129J
 ELMW GINNIE P58G
 G A R PREDESTINED B/R NEW DESIGN 036
COR SCOTCH CAP 5231 G A R EXT 4206
 A PLUS BLACKCAP 2151 TWIN VALLEY PRECISIONE161
 G A R SCOTCH CAP 867

CED	BW	WW	YW	MA	CEM	SC	ST	DOC	CW	RE	YG	MS	\$MTI
8	1.3	50	100	37	6	0.5	-	11	29	-0.12	0.39	0.49	59

- P.E. 5.23.13 to 8.15.13 to Springfield Complete 1084 (Angus)
- This young 50% Lim-Flex heifer is the result of the mating of a big time purebred Limousin with a powerful Angus donor
- She is sired by the syndicated sire BOHI Top Dollar 7144T, the son of AUTO Dollar General 122R from the national champion Carrouseles Pina Colada
- Her dam is the donor COR Scotch Cap 5231, a proven daughter of GAR Predestined that goes back to a daughter of Twin Valley Precision E161

55

ELCX Tango 254Z

Lim-Flex (75) Cow HP/HB ELCX 254Z LFF 2012129 03.29.12

GPF BLAQUE RULON
DHVO DEUCE 132R
 AMY JO DHAN 20L

BLACK DIAMOND
 QUAIL RUN RAMONA BP
 BLACK CAT DHAN 152G
 GPF AMBER JO
 COLE WOLF HUNT
 WULF'S CASUAL 3161C
 B/R NEW DESIGN 323
 T B R BANDO LADY Y167

WULFS NOBEL PRIZE 3861N
GPF BLAQUE DESTINY
 C A SHENANDOAH 409

CED	BW	WW	YW	MA	CEM	SC	ST	DOC	CW	RE	YG	MS	\$MTI
9	0.2	52	91	25	-1	0.6	-	-	51	0.48	0.11	0.16	50
P	P	P	P	P	P	P	-	-	P	P	P	P	

- P.E. 5.23.13 to 8.15.13 to Springfield Complete 1084 (Angus)
- Polled and homozygous black
- This 75%Lim-Flex female represents a tried and very proven mating
- She is sired by the once national champion bull DHVO Deuce and from the big time donor GPFX Destiny. She is now owned by Owen Cattle Company, Hornbeak, TN and has proven her worth time and time again
- A full sister to this heifer sold to Magness Land & Cattle Co. at \$15,000 and others are working for Riverside Valley Limousin, Hohenwald, TN and Massey Limousin, London, KY



DAM
REFERENCE >
 GPF BLAQUE
 DESTINY

56

ELC Forever Lady Z144

Angus Cow Polled/Black Z144 AAA 17759850 03.20.12

B/R DESTINATION 727-928
44 DESTINATION 809
 B/R BLACKCAP EMPRESS 1104

B/R DESTINATION 727
 B/R BLACKCAP EMPRESS 558
 BASIN MAX 602C
 B/R BLACKCAP EMPRESS 558
 BON VIEW NEW DESIGN 208
 TC ERICA EILEEN 2047
 BON VIEW NEW DESIGN 878
 E F FOREVER LADY 5102

TC TOTAL 410
44 FOREVER LADY 81144
 E F FOREVER LADY 1255

CED	BW	WW	YW	MA	CEM	SC	ST	DOC	CW	RE	YG	MS	\$MTI
3	1.7	51	91	24	9	0.92	-	-	39	0.53	0.70	0.02	-
5	5	5	5	5	5	5	-	-	5	5	5	5	

- P.E. 5.23.13 to 8.15.13 to Springfield Complete 1084 (Angus)
- Here is a very complete and well made 1st calf heifer from the prominent ELC Angus program
- She is sired by 44 Destination 809, a son of B/R Destination 727-928 and is from a daughter of TC Total 410
- We love so much about the pedigree and of course her EPD profile
- She has a 1.7 for birth, 91 for yearling weight, 24 for milk, .70 for marbling and .53 for ribeye

57

ELC Entense T781Z

Angus Cow Polled/Black T781Z AAA 17759848 02.28.12

B/R DESTINATION 727-928
44 DESTINATION 809
 B/R BLACKCAP EMPRESS 1104

SS OBJECTIVE T510 OT26
TCA EVERELDA ENTENSE T781
 BT EVERELDA ENTENSE 403H
 TC STOCKMAN 365
 SITZ EVERELDA ENTENSE 1905

CED	BW	WW	YW	MA	CEM	SC	ST	DOC	CW	RE	YG	MS	\$MTI
7	1.5	53	92	23	8	-	-	-	33	0.46	0.70	0.01	-
5	5	5	5	5	5	-	-	-	5	5	5	5	

- P.E. 5.23.13 to 8.15.13 to Springfield Complete 1084 (Angus)
- Here is another daughter of 44 Destination 809 which is a son of B/R Destination 727-928
- She is from a daughter of SS Objective T510 OT26 back to a daughter of TC Stockman
- This young 1st calf heifer offers a 1.5 for birth, 92 for yearling weight, 23 for milk, .70 for marbling and .46 for REA
- She sells bred and due to calve close to sale time which will make more of an incentive for the buyer to make this investment

58

ELCX Wild Fire Z7103

Angus Cow Polled/Black Z7103 AAA -- 02.22.12

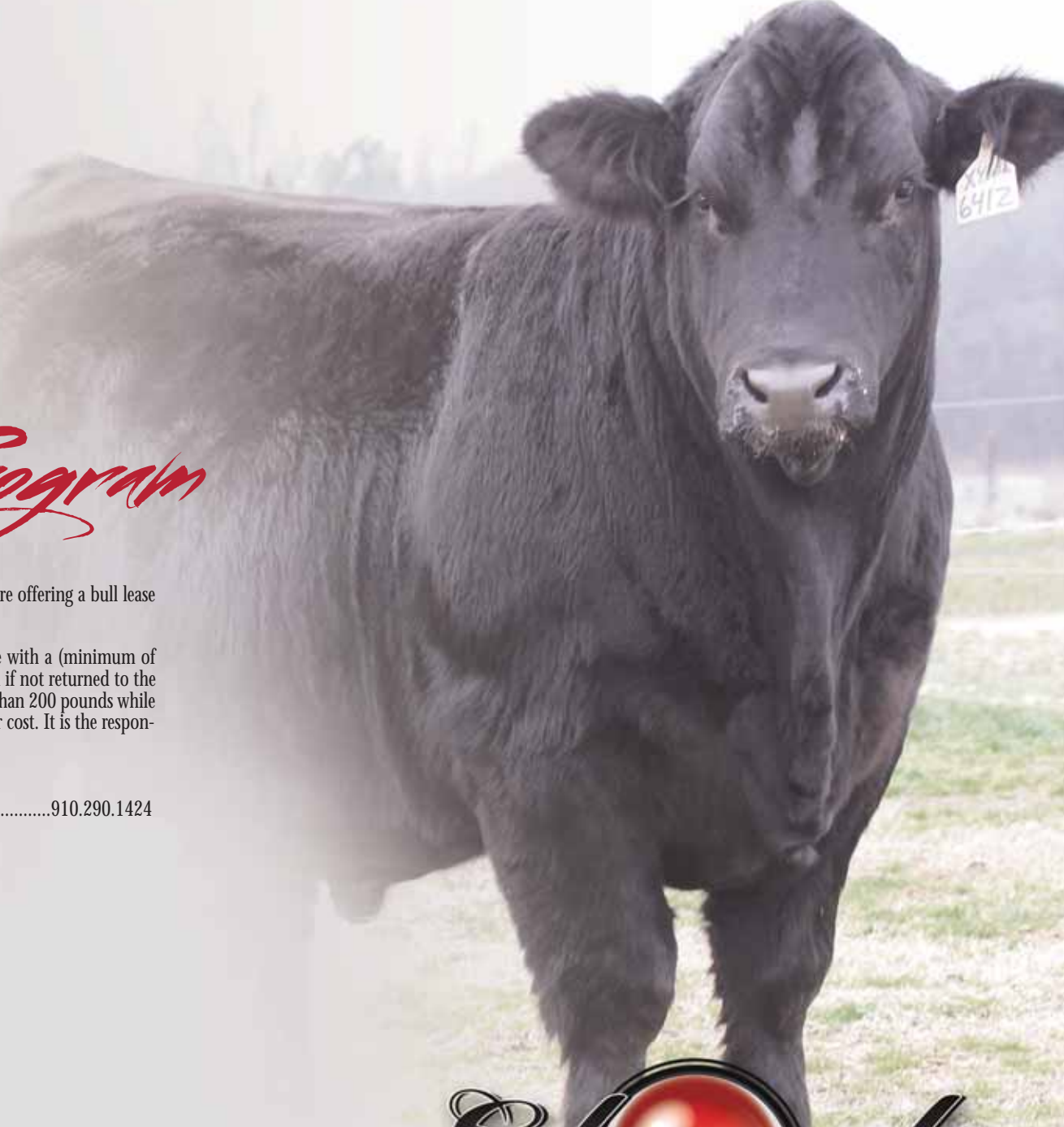
S A V 8180 TRAVELER 004
ANKONIAN WERNER WILD FIRE 96
 FSR ELBA SPECIAL DESIGN S406

S A V NET WORTH 4200
ELC MINI RITA 7103
 DEER VALLEY RITA 7162

SITZ TRAVELER 8180
 BOYD FOREVER LADY 8003
 W C C SPECIAL DESIGN L309
 W C C ELBA M82
 S A V 8180 TRAVELER 004
 S A V MAY 2410
 WOODHILL FORESIGHT
 KIATA RACHEL 1426

CED	BW	WW	YW	MA	CEM	SC	ST	DOC	CW	RE	YG	MS	\$MTI
-	-	-	-	-	-	-	-	-	44	0.52	0.59	0.01	-
-	-	-	-	-	-	-	-	-	5	5	5	5	

- P.E. 5.23.13 to 8.15.13 to Springfield Complete 1084 (Angus)
- This purebred Angus 1st calf heifer is sired by the SAV 8180 Traveler 004 son Ankonian Werner Wild Fire 96 bull
- Her dam is ELC Mini Rita 7103, a young daughter of SAV Net Worth back to a Woodhill Foresight donor, Deer Valley Rita 7162
- This young female offers a top set of EPD's and is made just the way you would like one made...moderate, easy in her condition and very docile



ELCX

Bull Lease Program



If purchasing a bull is NOT an option for you at this time then the Edwards Family are offering a bull lease program.

The agreement is at the end of the sale, you can pay 25% of your bid purchase price with a (minimum of \$600). This pays for a 90 day lease on the herd bull. After 90 days of using the bull if not returned to the the Edwards operation then you will be charged \$5 per day. If the bull loses more than 200 pounds while in your care, a \$1 per pound for each pound over 200 pounds will be added to your cost. It is the responsibility of the lessee for all transportation/hauling of the bulls.

For further details, please feel free to contact ...

Dexter Edwards.....	910.290.0467	Nicholas Edwards	910.290.1424
Randy Ratliff.....	615.330.2735		





Lot 59>
ELCX STAR STRUCK
641Z

Morris

59

ELCX Star Struck 641Z

% Limousin (88) Bull DP/DB ELCX 641Z NXM 2025389 11.02.12
 DHVO DEUCE 132R GPFF BLAQUE RULON
MAGS XYLOID AMY JO DHAN 20L
 BOHI RHONDA 314R EXLR NEW GENERATION 071M
 DAVIS ROSETTA 9514
 WADDLES COBALT 3106
 TNUH BLUE PRINT 245H TNUH MISS C245
GPFX MS BLUEPRINT RADS BLACK PRODIGY
 MAGS PALOOKA MAGS MANDARIN 308L

CED	BW	WW	YW	MA	CEM	SC	ST	DOC	CW	RE	YG	MS	\$MTI
7	1.9	44	79	27	0	0.5	-	21	34	0.35	0.12	0.04	43
P	P	P	P	P	P	P	-	P	P	P	P	P	

BW: 70 lbs.; WW: 580 lbs.; YW: 1,265 lbs.

Here is one big time 87.5% Limousin herd sire prospect! This double polled, double black son of MAGS Xyloid has definitely captured the attention of the many that have seen him. He is extremely heavy in his bone structure, big footed and very soft in his pasterns. He is massive in his thickness and the amount of mass that he has. If you want to add pounds, performance and a prominent look to a set of calves then consider this young bull.





Dam> MAGS TAPESTRY



Sire> MAGS WL Usual Suspect 538



Morris

Lot 61>
ELCX SUSPECT 313A

61

ELCX Suspect 313A

Lim-Flex (75) Bull HP/Black ELCX 313A LFM 2035715 01.20.13

MAGS SASQUATCH	EXLR NEW GENERATION 071M
MAGSWL USUAL SUSPECT 538U	MAGS FRUITFUL 487M
MAGS PHANTOMS PRIZE	GPFF BLAQUE RULON
	ALCM KOOL TUNES
MYTTY IN FOCUS	S A F FOCUS OF E R
MAGS TAPESTRY	MYTTY COUNTESS 906
MAGS GRETCHEN 143L	EXLR DAKOTA 353G
	MAGS GRETCHEN

CED	BW	WW	YW	MA	CEM	SC	ST	DOC	CW	RE	YG	MS	\$MTI
8	1.2	49	95	24	4	0.4	-	12	24	0.14	0.17	0.20	51
P	P	P	P	P	P	P		P	P	P	P	P	

BW: 75 lbs.; WW: 620 lbs.; YW: 1,122 lbs.

This is one terrific herd sire prospect in the making! He is a 75% Lim-Flex son of MAGS WLR Usual Suspect 538U, the breed's Triple Crown winning bull for Wies Limousin and Magness Land & Cattle. His dam is the predictable donor the ELCX program, MAGS Tapestry. She is the daughter of MYTTY In Focus back to the once big time show female MAGS Gretchen 143L. We appreciate his numbers of a 75# birth weight and a 711# adjust weaning weight. He is extreme in his thickness and very appealing in his profile. This young herd bull is black and homozygous polled. He is extremely long in his spine, very square and level out of his hip and strong in his stance. Buy with confidence in this young bull and we think you will appreciate him as much as we do.



62

ELCX Dasani 603 Z

% Limousin (88) Bull DP/Black ELCX 603Z NXM 2031699 10.05.12
 DHVO DEUCE 132R GPFf BLAQUE RULON
MAGS XYLOID AMY JO DHAN 20L
 BOHI RHONDA 314R EXLR NEW GENERATION 071M
 DAVIS ROSETTA 9514
 AUTO BLACK DAKOTA 129J EXLR DAKOTA 353G
EXLR LUVLY 603P DFLC JET SET BPC 34Y
 EXLR LUVLY 002H WULFS DAWSON 4421D
 AMBL LUVLY 340Y

CED	BW	WW	YW	MA	CEM	SC	ST	DOC	CW	RE	YG	MS	SMTI
7	2.3	45	86	23	3	0.3	-	19	26	0.28	0.03	-0.02	43
P	P+	P	P	P	P	P	-	P	P	P	P	P	

- BW: 75 lbs.; WW: 681 lbs.; YW: 1,142 lbs.
- Black and double polled
- This 87.5% Limousin herd sire prospect is sired by the leading A.I. sire MAGS Xyloid. Xyloid was the once All American Futurity Supreme Champion bull and has now continued his excellence by siring amazing cattle throughout our breed. ELCX Dasani 603Z is extremely thick and very heavy in his muscle pattern
- This young herd sire prospect is from a daughter of AUTO Black Dakota 129J and from a daughter of Wulf's Dawson back to the famed AMBL Luvly 340Y

65

ELCX Jump Start 344Z

Lim-Flex (50) Bull DP/DB ELCX 344Z LFM 2035068 12.01.12
 BT CROSSOVER 758N C A FUTURE DIRECTION 5321
MAGS WINSTON BT ROYAL PRIDE 237G
 MAGS STRAWBERRY EXLR NEW GENERATION 071M
 MAGS FRUITFUL 487M
 BR MIDLAND TWIN VALLEY PRECISIONE161
MAGS SACHEL BR ROYAL LASS 7036-19
 MAGS LADY ACE EXLR INTRIGUE 361G
 CHAZ MISS GRETA 7003G

CED	BW	WW	YW	MA	CEM	SC	ST	DOC	CW	RE	YG	MS	SMTI
13	-0.3	47	95	23	5	0.3	-	12	34	-0.01	0.04	0.51	60
P	P	P	P	P	P	P	-	P	P	P	P	P	

- BW: 70 lbs.; WW: 613 lbs.; YW: 1,090 lbs.
- Here is one big numbered herd sire prospect
- He is a double polled, double black, 50% Lim-Flex son of MAGS Winston that is from the predictable donor MAGS Satchel
- We love his number package with a -0.3 for birth, 95 for yearling weight, 23 for milk, .51 for marbling and 60 for MTI
- He is moderate, easy in his condition and very docile
- This young bull is the result of the blending of the best the ELCX has to offer which just happen to be some of the finest in the entire breed

63

ELCX Master Card 287Z

% Limousin (88) Bull HP/HB ETHR 287Z NXM 2031141 11.02.12
 DHVO DEUCE 132R GPFf BLAQUE RULON
MAGS XYLOID AMY JO DHAN 20L
 BOHI RHONDA 314R EXLR NEW GENERATION 071M
 DAVIS ROSETTA 9514
 JCL LODESTAR 27L HUNTS HI-LITER 245G
KRVN PROM BELLE 130P LOGAN'S CHEERLEADER 280G
 JCL LADY LEXUS 38L COLE FIRST DOWN 46D
 LKCC SMITH CATTLE 452B

CED	BW	WW	YW	MA	CEM	SC	ST	DOC	CW	RE	YG	MS	SMTI
11	0.6	41	84	25	4	0.6	-	22	33	0.18	0.14	0.11	45
P	P	P	P	P	P	P	-	P	P	P	P	P	

- BW: 78 lbs.; WW: 624 lbs.; YW: 1,126 lbs.
- This homozygous polled and homozygous black, 87.5% Limousin herd bull prospect is sired by the leading MAGS Xyloid
- His dam KRVN Prom Belle 130P is one of the top producers in the ELCX program. She is a daughter of JCL Lodestar 27L from a daughter of COLE First Down
- We appreciate the profile, balance and the over all mass that this bull has
- He is super sound in his structure and very appealing from the side
- He offers a 78 lbs. birth weight and strong across the board in all his given traits

66

ELCX Navigator 54Z

Lim-Flex (68.5) Bull DP/DB ETHR 54Z LFM 2033964 10.25.12
 G A R PREDESTINED B/R NEW DESIGN 036
MAGS TEDDIE G A R EXT 4206
 EXLR 199H WULFS FANFARE 4055F
 EXLR 558F
 JCL 73J HUNTS HI-LITER 245G
BBPB PENNY 185B 545P JCLC 32G
 CBLR MS PENNY POWER 185B POLLED POWER BUIT 8V
 CBLR PENNY 107U

CED	BW	WW	YW	MA	CEM	SC	ST	DOC	CW	RE	YG	MS	SMTI
8	-0.2	35	72	27	2	0.2	-	-	16	0.11	0.10	0.23	48
P	P	P	P	P	P	P	-	-	P	P	P	P	

- BW: 68 lbs.; WW: 673 lbs.; YW: 1,174 lbs.
- Double polled and double black
- This 68.5% Lim-Flex bull represents a strong set of numbers and stems from a very predictable pedigree. He is sired by the big numbered MAGS Teddie, son of GAR Predestined
- He offers a low birth of -0.2, 27 for milk and .23 for marbling
- This young herd sire prospect posts a low birth weight number of .23

64

ELCX Urgent 6 Z

Lim-Flex (69) Bull DP/DB ELCX 6Z LFM 2031745 11.01.12
 G A R PREDESTINED B/R NEW DESIGN 036
MAGS UNDOING G A R EXT 4206
 EXLR 199H WULFS FANFARE 4055F
 EXLR 558F
 GPFf BLAQUE RULON BLACK DIAMOND
DFLC BPC 6R QUAIL RUN RAMONA BP
 GPFf BLACK POLLED KAYE SOGF SPECIAL K 247B
 GPFf SIREN

CED	BW	WW	YW	MA	CEM	SC	ST	DOC	CW	RE	YG	MS	SMTI
4	1.4	50	88	32	-1	0.5	-	-	22	0.25	0.10	0.14	49
15	34	22	17	13	14	P	-	-	P	P	P	P	

- BW: 75 lbs.; WW: 624 lbs.; YW: 1,126 lbs.
- Double polled and double black
- Birth weight of 75# and one well rounded herd sire prospect is this beef bull
- He is sired by the big numbered MAGS Undoing, the proven son of GAR Predestined back to the famed EXLR 199H donor
- His dam is a daughter of GPFf Blaque Rulon that always put loads of muscle and performance into her offspring

67

ELCX Dollar Tree 283Z

Lim-Flex (75) Bull HP/HB ELCX 283Z LFM 2034788 09.16.12
 AUTO DOLLAR GENERAL 122R LVLS SECRET WEAPON 4408K
BOHI TOP DOLLAR 7144T AUTO KYRIA 232K
 CARROUSELS PINA COLADA AUTO BLACK DAKOTA 129J
 ELMW GINNIE P58G
 MINE POLLED DRYDOCK 004H WULFS QUARTERBACK 4222B
MINE PLD CAPTIVE 2370M CANE RIDGE SOUTHERN TIMES
 DKL LASSIE GAL 8064 OCC DISCOVERY 918D
 DKL GARNET GAL 3165

CED	BW	WW	YW	MA	CEM	SC	ST	DOC	CW	RE	YG	MS	SMTI
8	2.0	43	85	25	7	0.5	-	9	12	0.08	0.15	0.15	47
P	P	P	P	P	P	P	-	P	P	P	P	P	

- BW: 84 lbs.; WW: 656 lbs.; YW: 1,170 lbs.
- Homozygous polled and homozygous black
- This is a 75% Lim-Flex son of BOHI Top Dollar 7144T, the leading purebred son of AUTO Dollar General 122R from the national champion Carrouseles Pina Colada
- His dam is MINE Pld Captive 2370M, a proven donor for Twin Willow Farms, Springfield, MO. She is a daughter of MINE Polled Drydock that is massive in her rib shape and has tremendous capacity to her
- This young bull is one of the very stout made, heavy muscled bulls of the sale

68

MCBN Zippy 292Z

Lim-Flex (72) Bull DP/DB ELCX 292Z LFM 2014190 10.08.12
 MYTTY IN FOCUS S A F FOCUS OF E R
MCBN WARNER 955W MYTTY COUNTESS 906
 LVLS 408H LVLS POLLED JUSTICE 0601E
 LVLS MISS STABLIZER 1408E
 AUTO DOLLAR GENERAL 122R LVLS SECRET WEAPON 4408K
AUTO TAYLOR 204T AUTO KYRIA 232K
 AUTO LANA 255L EXLR DAKOTA 353G
 TEXS STAR 208Y

CED	BW	WW	YW	MA	CEM	SC	ST	DOC	CW	RE	YG	MS	\$MTI
8	1.1	54	98	37	6	-	-	-	-	-	-	-	0
P	30	15	11	11	P	-	-	-	-	-	-	-	

- BW: 78 lbs.; 620 lbs.; YW: 1,115 lbs.
- Double polled and double black
- This 71.8% Lim-Flex herd sire prospect is one of the strong numbers one in the sale offering
- He posts a 1.1 for birth, 98 for yearling weight and a breed leading 37 for milk
- He is sired by the MYTTY In Focus son MCBN Warner 955W and is from a big numbered daughter of AUTO Dollar General
- This bull will definitely make a positive impact on any set of cows he runs with

69

ELCX Rum 8 Z

Lim-Flex (69) Bull DP/DB ELCX 8Z LFM 2031746 11.05.12
 G A R PREDESTINED B/R NEW DESIGN 036
MAGS UNDOING G A R EXT 4206
 EXLR 199H WULFS FANFARE 4055F
 EXLR 558F
 COLE WULF HUNT COLE FIRST DOWN 46D
DFLC HBPC 8S COLE CATALINA 3309C
 DFCL BPC 28L DFCL DOUBLE SHOT BPB 41E
 DFCL BPC 1J

CED	BW	WW	YW	MA	CEM	SC	ST	DOC	CW	RE	YG	MS	\$MTI
7	0.0	43	83	30	2	0.2	-	-	14	0.08	0.13	0.20	49
16	33	21	17	13	15	P	-	-	P	P	P	P	

- BW: 78 lbs.; WW: 620 lbs.; YW: 1,115 lbs.
- Double polled and double black
- This MAGS Undoing son has posted a 0 for birth, 30 for milk and .20 for marbling
- He has a 78# birth weight and has a very desirable look to him
- This young bull is ready for use and we think will certainly add value to in given set of cows he used on

70

ELCX Power Play 265Z

Lim-Flex (75) Bull HP/HP ELCX 265Z LFM 2034786 09.07.12
 AUTO DOLLAR GENERAL 122R LVLS SECRET WEAPON 4408K
BOHI TOP DOLLAR 7144T AUTO KYRIA 232K
 CARROUSELS PINA COLADA AUTO BLACK DAKOTA 129J
 ELMW GINNIE P58G
 MINE POLLED DRYDOCK 004H WULFS QUARTERBACK 4222B
MINE PLD CAPTIVE 2370M CANE RIDGE SOUTHERN TIMES
 DKL LASSIE GAL 8064 OCC DISCOVERY 918D
 DKL GARNET GAL 3165

CED	BW	WW	YW	MA	CEM	SC	ST	DOC	CW	RE	YG	MS	\$MTI
8	2.0	43	85	25	7	0.5	-	9	12	0.08	0.15	0.15	47
P	P	P	P	P	P	P	-	P	P	P	P	P	

- BW: 69 lbs.; WW: 634 lbs.; YW: 1,176 lbs.
- Homozygous polled and homozygous black
- This son of BOHI Top Dollar 7144T is one stout herd sire prospect
- BOHI Top Dollar 7144T is the leading ELCX and MAGS sire that has made a very positive impact in the breed and certainly this program
- ELCX Power Play 265Z is out of the Twin Willow Farms donor MINE Pld Captive 2370M.
- We appreciate the low birth of 69# with this young bull and the 25 for milk that he offers



**Lot 70
Reference
Sire>
BOHI TOP
DOLLAR
7144T**

A family operation with the integrity and values needed to gain your respect!

73

PCF Idelette 206 of 010

Angus Bull Polled/Black 206 AAA 17336956 08.26.12
 S S TRAVELER 6807 T510 D H D TRAVELER 6807
SS OBJECTIVE T510 OT26 S S MISS HI SPADE A114
 S S MISS RITA R011 7R8 S S RITO RITO R76 R011
 S S MISS ULTRESS U56
 WERNER RETAIL PRODUCT 1357 G A R RETAIL PRODUCT
PCF IDELETTE R P 010 WERNER KEM 115
 P C F BANDO 5175 IDELETTE401 S A F 598 BANDO 5175
 WOODLAWN IDELETTE 569

CED	BW	WW	YW	MA	CEM	SC	ST	DOC	CW	RE	YG	MS	SMTI
9	1.5	60	102	25	9	-	-	-	22	0.43	+8.74	+76	-
5	5	5	5	5	5	-	-	-	5	5	5	5	-

- BW: 72 lbs.; WW: 617 lbs.; YW: 1,152 lbs.
- Here is a son of SS Objective T510 OT26, the proven son of SS Traveler that has earned a 119 for yearling weight, 30 for milk, .90 for marbling and .68 for ribeye
- His dam is a daughter of Werner Retail Product back to a daughter of SAF 598 Bando 5175 that has earned a .62 for marbling
- This beef bull has it all stacked in his favor and we are positive will make a very positive impact on any set of cows

74

PCF Bismarck Skymere 257

Angus Bull Polled/Black 257 AAA 17335619 09.18.12
 S A V BISMARCK 5682 G A R GRID MAKER
PCF BISMARCK DESIGN 064 S A V ABIGALE 0451
 P C F BURGESS ND323-421 B/R NEW DESIGN 323-9150
 THREE TREES BURGESS 2662
 WERNER RETAIL PRODUCT 1357 G A R RETAIL PRODUCT
PCF SKYMERE R P 008 WERNER KEM 115
 P C F EXPECTATION 878 429 G A R EXPECTATION 4915
 P C F SKYMERE 878 215

CED	BW	WW	YW	MA	CEM	SC	ST	DOC	CW	RE	YG	MS	SMTI
11	1.1	50	88	27	13	-	-	-	26	0.58	0.48	-0.00	-
5	5	5	5	5	5	-	-	-	5	5	5	5	-

- BW: 70 lbs.; WW: 623 lbs.; YW: 1,143 lbs.
- This grandson of SAV Bismarck 582 goes back to a daughter of Werner Retail Product 1357
- He is moderate in his frame score and very easy in his condition
- We appreciate the amount of muscle, mass and over all performance that this purebred Angus bull has

75

ELC Game Time Z00

Angus Bull Polled/Black 00 AAA -- 11.18.12
 G A R RETAIL PRODUCT G A R PRECISION 1680
G A R GAME ON G A R EXT 4927
 G A R 1407 NEW DESIGN 1683 BON VIEW NEW DESIGN 1407
 G A R 6I6 RITO 3561
 S S OBJECTIVE T510 OT26 S S TRAVELER 6807 T510
RITA 00F2 OF RITA 786 OBJ S S MISS RITA R011 7R8
 RITA 786 OF RITA 4R23 878 BON VIEW NEW DESIGN 878
 RITA 4R23 OF 5H26 RITO 9M9

CED	BW	WW	YW	MA	CEM	SC	ST	DOC	CW	RE	YG	MS	SMTI
4	-0.6	57	108	37	4	-	-	-	26	-0.28	0.48	0.40	35

- BW: 68 lbs.; WW: 605 lbs.; YW: 1,122 lbs.
- This bull is sired by a son of Donnell Destined 232 928 426, a son of B/R Destination 727-928 and from a daughter GAR Exxaltation 3144
- His dam is a daughter of SS Objective T510 OT26, the big numbered son of SS Traveler 6807
- This young bull is big in his scrotal, very docile and made very well
- He is strong in his numbers and very performance oriented

76

ELC MAGNUM Z103

Angus Bull Polled/Black 103 AAA -- 10.18.12
 B/R MAGNUM 399 BASIN MAX 602C
44 MAGNUM 8563 B/R BLACKCAP EMPRESS 8183
 B/LANTZ BLACKCAP 6203 B/R DESTINATION 727-928
 B/R LANTZ BLACKCAP 3209
 G A R PREDESTINED B/R NEW DESIGN 036
SOUTHERN BLACKCAP 76103 G A R EXT 4206
 CALLAWAYS BLACKCAP 0798 N BAR EMULATION EXT
 G A R SCOTCH CAP 867

CED	BW	WW	YW	MA	CEM	SC	ST	DOC	CW	RE	YG	MS	SMTI
4	-1.9	50	83	34	1	0.0	-	5	19	-0.21	0.39	0.39	56

- BW: 69 lbs.; WW: 612 lbs.; YW: 1,208 lbs.
- This young herd sire prospect is sired by 44 Magnum 8563, the leading son of B/R Magnum 399 and from a daughter of B/R Destination 727-928. He has earned a .97 for marbling and .43 for ribeye
- The dam of this young herd sire prospect is a daughter of GAR Predes-tined from a daughter of N Bar Emulation EXT that has earned a 29 for milk and .78 for marbling
- This herd sire prospect has the proper pedigree, predictable genetics and the strength in numbers needed to change a calf crop for the positive

The East's largest
 Limousin & Lim-Flex
 seedstock suppliers.



R&R MARKETING
COMPANY

P.O. Box 281677
Nashville, TN 37228

(L#2845)

**FIRST CLASS
PRE-SORTED
PAID**
Montezuma, Iowa
Permit No. 30



ELCX ZENNA 248Z

- 2014 Denver National Show reserve division champion
- Owned by Freebird Farms, McMinnville, TN



ELCX ZORRO 243Z

- 2013 Tennessee State Fair reserve division champion
- 2012-2013 Two time grand champion of the North Carolina State Fair
- 2013 TN State Limousin show grand champion
- 2013 All American Futurity reserve division champion
- 2013 NAILE division champion
- 2014 Denver National Limousin Show division champion
- Owned by Freebird Farms, McMinnville, TN



ELCX ANASTASIA 323A

- 2013 NAILE class winner
- 2014 Denver National class contender
- Owned by Owen Cattle Co., Hornbeak, TN and Edwards Land & Cattle Co.



ELCX CHRISTY 260Z

- 2013 NAILE reserve division champion
- 2013 Fort Worth reserve division champion
- Owned by Wies Limousin, Wellsville, MO and Edwards Land & Cattle Co.



ELCX AERIELA 308A

- Many times class contender
- Owned by Cameron Bryant, Pikeville, TN



ELCX I KNOW 304Z

- 2013 Missouri State Fair reserve grand champion
- 2014 National Limousin Show class winner
- 2014 Fort Worth Show class winner
- Owned by Cooper Henderson, Wellsville, MO



ELCX KNOWING 303Z

- 2013 American Royal reserve grand champion female
- 2014 Denver National Sale top selling female at \$20,000
- Now owned by Stowers Limousin, Bridgeport, TX



A brand you have come to respect! Here are a few of the show champions this past year that represent the ELCX brand. We appreciate our friends campaigning their genetics around the country. Genetics like these are highlighted in this Spring sale.